

---

**USER MANUAL**

Tumble dryer

EN

TD75.C37X

TDC177XH

# Contents

|   |           |  |           |
|---|-----------|--|-----------|
| <b>Introduction</b> .....                       | <b>3</b>  | <b>Cleaning and maintenance</b> .....          | <b>33</b> |
| <b>Safety precautions</b> .....                 | <b>4</b>  | .....  | 33        |
| .....   | 4         | <b>Errors – what to do?</b> .....              | <b>40</b> |
| <b>Dryer description</b> .....                  | <b>9</b>  | .....  | 40        |
| .....   | 9         | <b>Service</b> .....                           | <b>44</b> |
| <b>Before using the appliance for the first</b> |           | .....  | 44        |
| <b>time</b> .....                               | <b>10</b> | <b>Technical information</b> .....             | <b>45</b> |
| .....   | 10        | .....  | 45        |
| <b>Installation and connection</b> .....        | <b>11</b> | <b>Program chart</b> .....                     | <b>46</b> |
| .....   | 11        | .....  | 46        |
| <b>Advices before drying</b> .....              | <b>23</b> | <b>Removal</b> .....                           | <b>48</b> |
| .....   | 23        | <b>Disposal / recycling of packaging</b> ..... | <b>48</b> |
| <b>Drying process, step by step</b> .....       | <b>26</b> | <b>Quick guide</b> .....                       | <b>49</b> |
| .....   | 26        | .....  | 49        |
| <b>Settings</b> .....                           | <b>31</b> |  |           |
| .....   | 31        |  |           |

Dear Customer,

We thank you for purchasing this quality ASKO product.


We hope it meets all your expectations. Scandinavian design combines pure lines, everyday functionality, and high quality. These are the key characteristics of all our products, and the reason why they are highly appreciated across the globe.

We kindly recommend you to read these instructions before using the appliance for the first time. The instruction manual also includes information on how you can help protect the environment.


**The following symbols are used throughout the manual and they have the following meanings:**

 INFORMATION!


Information, advice, tip, or recommendation

 WARNING!


Warning – general danger

 ELECTRIC SHOCK!

Warning – danger of electric shock

 HOT SURFACE!

Warning – danger of hot surface

 DANGER OF FIRE!

Warning – danger of fire

Original instructions

See Quick guide on the last page.

# Safety precautions

## General

**Please read the instruction manual and save it for future reference.**

- **Please do not use the tumble dryer if you have not read and understood these instructions or use first.**
- Failure to observe the instructions for use or inappropriate use of the tumble dryer may result in damage to the laundry or appliance, or injury to the user.
- Instructions for use are available on our website at [www.asko.com](http://www.asko.com).
- Appliance is intended to be used in an area open to the public.
- Before connecting the dryer to the power mains, please read carefully the instructions for use that describe the dryer and its correct and safe use. The instructions apply to several appliance types or models; thus, settings or equipment may be described herein which is not available in your dryer.
- Leave any repairs and similar tasks on the dryer to an expert. Unprofessional repair may result in an accident or major malfunction.
- After installation, the dryer should stand still for two hours before it is connected to the power mains.
- At least two persons are required to install the tumble dryer on top of a washing machine.
- The dryer shall not be connected to the power mains using an extension cord.
- Do not connect the tumble dryer to an electrical outlet intended for an electric shaver or hair dryer.

### WARNING!

If the power cord is damaged, it has to be replaced by the manufacturer, an authorized service technician, or a similarly qualified person, in order to avoid any hazards.

-  WARNING!


The appliance shall not be supplied through an external switching device, such as a timer, or connected to a circuit that is regularly switched on and off by a utility.

- **After the drying process, unplug the dryer power cord from the power outlet.**

If you have a tumble dryer with a 3-phase connection, do not pull the plug out of the power outlet.

- The appliance shall be disconnected from the power source during servicing and replacement of parts. Removal of the plug has to be such, that an operator can check, from any of the points to which he has access that the plug remains removed.
- In case of incorrect appliance connection, incorrect use, or servicing by an unauthorized person, the user shall bear the cost of any damage.
- Air in the dryer environment should not contain dust particles. The air where the dryer is installed should be thoroughly ventilated to prevent reverse flow of gases released from the gas appliances with open fire (e.g. fireplaces).
- Do not evacuate the air from the dryer through channels used for appliances or devices that use natural gas or other fuels for their operation (only applies to the evacuation dryer).
- Clean the door net filter after each drying cycle.
- Do not dry unwashed laundry in the dryer.
- Laundry stained with oil, acetone, alcohol, oil derivatives, stain removers, turpentine, wax, and wax removers should be washed in a washing machine with hot water and detergent before it is dried in the dryer.
- Clothing that includes latex, rubber parts, shower and bathing caps, and laundry or covers with rubber foam shall not be dried in the dryer.
- Use laundry conditioners or similar products in compliance with manufacturer's instructions.

# Safety precautions

- Do not use any solvents, abrasive cleaners, glass cleaners, or all-purpose cleaners.
- Do not place the dryer behind lockable or sliding door, or door with a hinge on the opposite side of the dryer door hinge. Install the dryer in such way that the door can always be freely opened.
- Never block the air vents.
- Do not place the dryer on a carpet with long fibres as this may impede air circulation.
- The air in the room where the dryer is installed may not contain dust particles.
- Make sure the fibres do not accumulate around the dryer.
-  **DANGER OF FIRE!**  
Remove all objects such as lighters and matches from the pockets.
- After installation, wait for 24 hours before using the appliance. If the dryer has to be laid down on one of the sides during transport or servicing, place it with its left side, viewing from the appliance front, downwards (only applies to dryers with a heat pump).
- The appliance shall not be in contact with a wall or adjacent furniture.
- If the dryer is connected to an air exhaust system already used for another appliance, a non-return valve must be installed. Reverse flow into the dryer could damage the appliance, and the non-return valve prevents such reverse flow (only applies to the evacuation dryer).
- A float will switch off the appliance if the condensed water pipe is clogged or if there is a risk of overflowing of the condensed water accumulated in the condensed water tank (only applies to the evacuation dryer).
- If you wish to move the dryer or store it in a non-heated room during winter, it is essential that you first empty the condensed water tank (only applies to the condenser dryers and dryers with a heat pump).


- Maximum drying capacity in kg is indicated on the rating plate.

## Safety

-  DANGER OF FIRE!


Only use the dryer to dry laundry that was washed with water. Do not dry any laundry that was washed or cleaned with flammable cleaners or substances (such as gasoline, trichloroethylene etc.) as this may result in an explosion.

- If you have cleaned your clothes with industrial cleaners or chemical substances, do not dry them in the dryer.
- If the air exhaust hose is connected to an opening in the wall, influx of cool air may be prevented by installing a ventilation grille. (Only applies to evacuation dryer.)
- The air exhaust hose shall not be connected to an active chimney used to evacuate smoke or waste gases; into a shaft intended for ventilating rooms with combustion equipment; or into a chimney used by third parties. If smoke or waste gases return to the room where the dryer is installed, there is a danger of poisoning (only applies to evacuation dryer).
- The dryer is protected with an automatic switch-off system in case of overheating. The system switches off the heater if the temperature is too high (only applies to evacuation and condenser dryer).
- If the net filter is clogged, the automatic heater switch-off device can be triggered. See chapter "CLEANING AND MAINTENANCE" (only applies to evacuation and condenser dryer).

-  HOT SURFACE!

**WARNING! The back of the dryer may get very hot during operation. Wait for the dryer to cool down completely before touching its back side. (Observe the instructions in the chapter "INSTALLATION AND CONNECTION")**

# Safety precautions

-  **HOT SURFACE!**

Never stop a drying cycle or do not open the door before the end of the program. If you do so for any reason, be careful when taking the laundry from the drum as it can still be very hot and there is a risk of burning.

Quickly remove the laundry from the drum and spread it to allow it to cool down as quickly as possible.

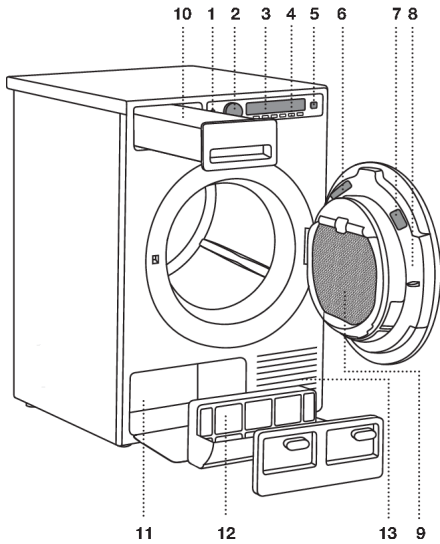
## **Child safety**

- Do not allow the children to play with the dryer.
- Prevent your children and pets from entering the dryer drum.
- Before closing the dryer door and running the program, make sure there is nothing except laundry in the drum (e.g. if a child climbed into the dryer drum and closed the door from the inside).
- **Activate the child lock.** See chapter: SETTINGS
- **Do not let children younger than three years to come near the dryer, unless they are under constant supervision.**
- The dryer is made in compliance with all relevant safety standards. This dryer may be used by children aged 8 years and above and by persons with reduced physical, sensory or mental capabilities or lack of experience and knowledge, but only if they are supervised during the use of the appliance, if they have been provided relevant instructions regarding safe use of the dryer, and if they understand the hazards of inappropriate use. Make sure children do not play with the appliance. Make sure the children do not clean the dryer or perform any maintenance tasks without supervision.

**SAVE THESE INSTRUCTIONS FOR FUTURE REFERENCE!**



# Dryer description



1. Main switch (ON/OFF)
2. Program selector knob
3. Display unit
4. Program settings buttons
5. Button (start/pause)
6. Rating plate with information about the dryer (on the inside of the drying machine door)
7. QR and AUID code (on the inside of the drying machine door)
8. Dryer door
9. Door net filter
10. Condensate tank (depending on the model)
11. Heat pump
12. Heat pump filter
13. Air vents

# Before using the appliance for the first time

## Packaging

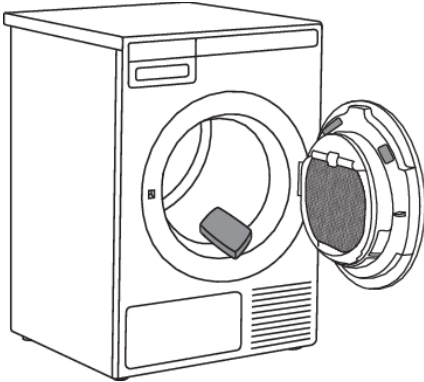
Remove all packaging.

Please sort the materials in compliance with local recommendations (see chapter "Disposal").

## Cleaning

Disconnect the dryer from the power mains and open the door towards you. Before using the dryer for the first time, clean the dryer drum using a soft damp cotton cloth and water.

In the case of a 3 phase connection of the appliance, switch off the main socket switch.



## 💡 INFORMATION!

No program can be started while the door is open.

## Choosing the language

When the dryer is connected (see chapter "Installation and connection") and switched on for the first time, choose the preferred language.

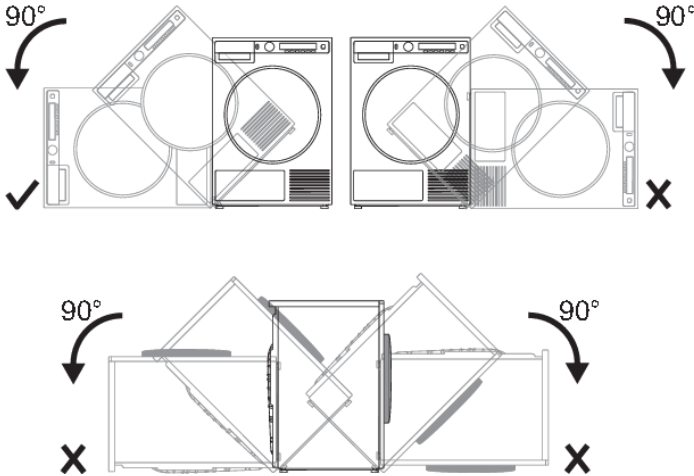
For further drying process, see chapter "DRYING PROCESS, STEP BY STEP".

## 💡 INFORMATION!

When you run the dryer for the first time, or if the dryer has been out of use for a long time, slight hitting noise may appear. This is normal and it will disappear after a few drying cycles.

## 💡 INFORMATION!

After installation, wait for 24 hours without moving the appliance before using it for the first time. If the dryer has to be laid down on one of the sides during transport or servicing, place it with its left side, viewing from the appliance front, downwards.



## Dryer placement

The dryer can be either free standing or installed on top of a washing machine.

## 💡 INFORMATION!

At least two persons are required to install the tumble dryer on top of a washing machine.

The dryer emits heat. Therefore, do not place it in a very small room, as the drying process may be longer due to limited amount of ambient air.

## 💡 INFORMATION!

Do not place the dryer in a room where temperature can drop below 0 °C, as the machine may not operate correctly at such low temperatures, or freeze, which in turn can result in damage to the machine.

For optimum dryer operation, install it in a room with adequate ventilation and a temperature between 15 °C and 25 °C.

## ⚠️ WARNING!

Do not place the dryer behind lockable or sliding door, or door with a hinge on the opposite side of the dryer door hinge. Install the dryer in such way that the door can always be freely opened.

# Installation and connection

## INFORMATION!

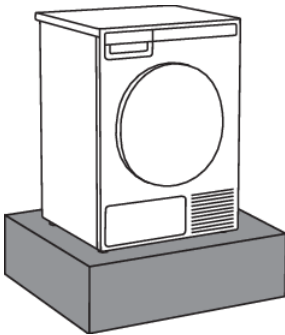
Never block the air vents.

## WARNING!

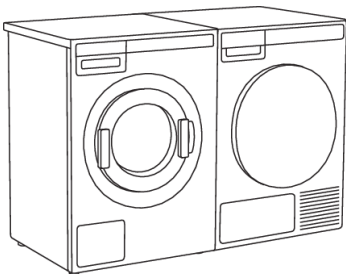
Do not place the dryer on a carpet with long fibres as this may impede air circulation.

## INFORMATION!

If the appliance is installed on a plinth or a similar structure, then the appliance must be fixed to it, to avoid the risk of falling. ASKO original accessories are available for this purpose, complete with fixing instructions.



## Free-standing appliance

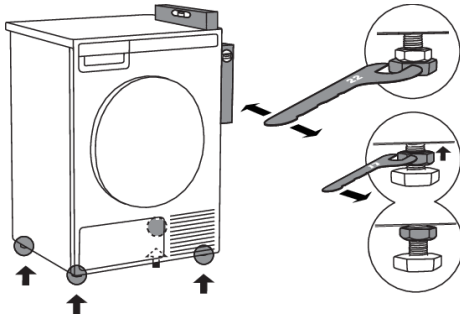


The dryer may be placed adjacent to a washing machine.

If the friction between the dryer feet and the floor is not sufficient, the dryer may move during operation. To prevent sliding, use a non-slide mat or install the supplied vacuum feet onto both front feet.

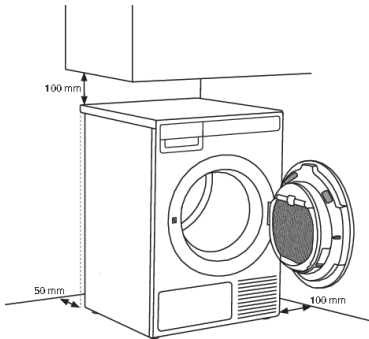
# Installation and connection

Table continued from last page



Place the dryer so that it is stable. Use a spirit level to level the dryer in longitudinal and traverse direction by rotating the adjustable feet using a No. 22 spanner (max. 15 mm). Then, firmly tighten the jam nuts (counter nuts) by rotating them towards the appliance bottom using a No. 17 spanner ↑.

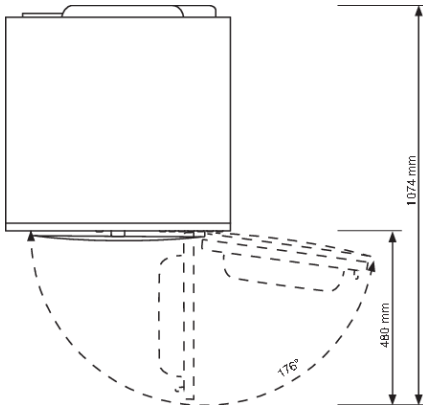
## Clearance around the dryer for optimum operation



### 💡 INFORMATION!

The appliance shall not be in contact with a wall or adjacent furniture. For optimum dryer operation, observe the clearance from the wall as shown in Fig.

## Opening the dryer door (top view)

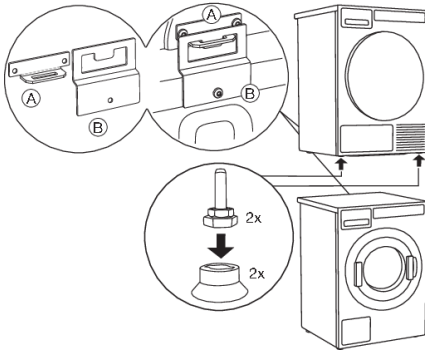


## Stacking on top of a washing machine

To stack the dryer on top of a washing machine, use the extra vacuum feet and the tipping guard (A+B), supplied in the cardboard box in the dryer drum. Tipping guard part B is designed to fit on

# Installation and connection

ASKO washing machines and it may be hard or impossible to mount on appliances of other brands. If the washing machine and dryer are not of matching dimensions or if you have installed a hidden helper between the two appliances, then binding plates are available as optional accessories at the service center (... available only for HH (accessory Hidden Helpers) and TD75 stacked on top of WM80 or WM85; not intended for any other combinations).



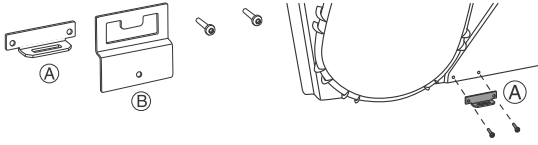
All ASKO washing machines can bear the weight of the dryer.

## 💡 INFORMATION!

Washing machine on which you wish to install the dryer must be able to bear the weight of the dryer (see washing machine's rating plate or technical information).

## How to stack a dryer onto the washing machine (ASKO):

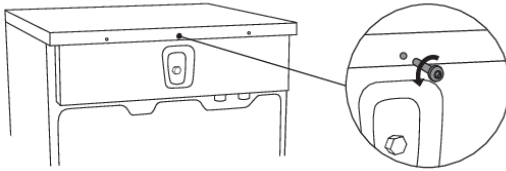
There is a cardboard box in the dryer drum, containing the vacuum feet and the tipping guard.



**1**

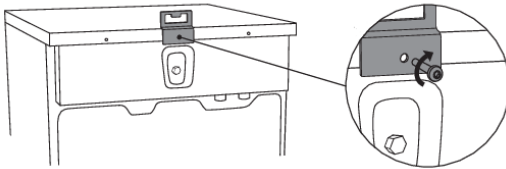
The tipping guard consists of two metal parts (A + B).

Use two screws to attach the A part to the back of the dryer.



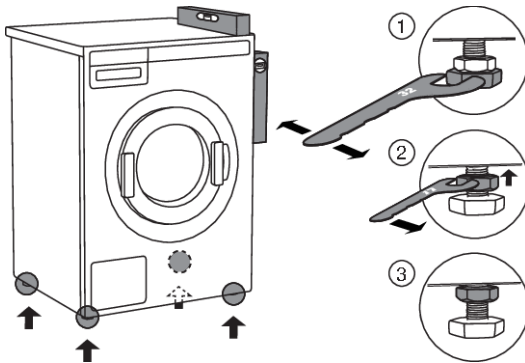
**2**

Undo the screw on the back side of the washing machine.



**3**

Use the screw to attach the tipping guard (B part) to the back of the washing machine.



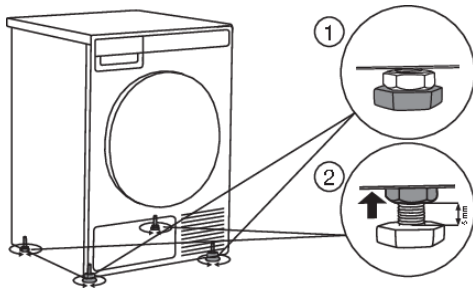
**4**

Level the washing machine so that it is stable.

1. Level the washing machine in longitudinal and traverse direction by rotating the adjustable feet using a No. 32 spanner. The feet allow levelling by +/- 1 cm.
2. After adjusting the height of the feet, firmly tighten the jam nuts (counter nuts) using a spanner No 17, by turning them towards the bottom of the washing machine ↑.
3. Tighten the jam nuts (counter nuts).


# Installation and connection

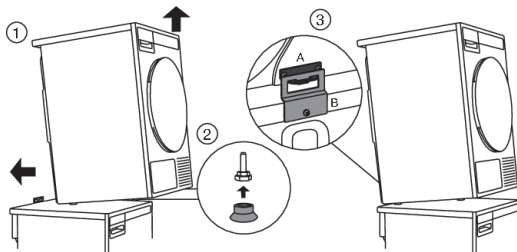
Table continued from last page



## 5

Set the dryer feet:

1. Tighten the front two feet all the way in.
2. Undo the back feet by 3.5 turns or 5 mm; then, fasten the jam nuts towards the bottom of the appliance .



## 6

Place the dryer onto the washing machine:

1. Lift the front part of the dryer by 5 to 10 cm.
2. Attach the vacuum feet onto the front feet of the dryer.
3. Push the dryer into the tipping guard (so that the B part is inserted into the A part) and release it (See figure on previous page).

## INFORMATION!

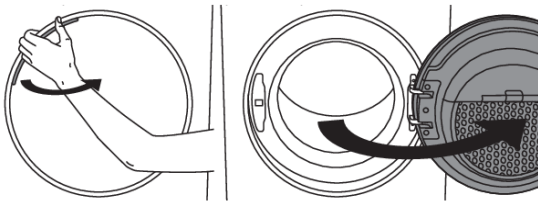
Make sure the tipping guard is "locked"!



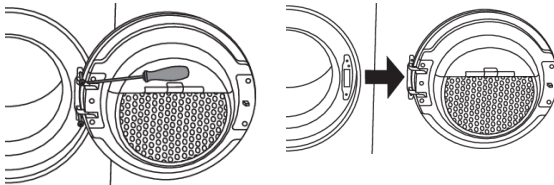
# Installation and connection

## Changing the door opening direction

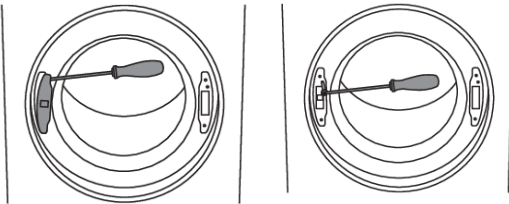
To change the direction of door opening, proceed as follows:



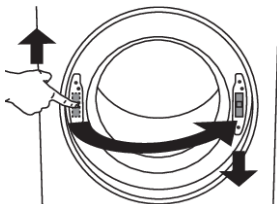
**1**  
Open the door fully.



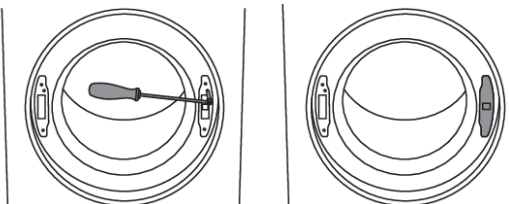
**2**  
Undo the screws and remove the door.



**3**  
Use a screwdriver to remove the door lock cover and undo the screw on the door lock.



**4**  
Push the door lock upwards and remove it. Move it to the other side and push it downwards.



**5**  
Fasten the screw on the door lock.  
Replace the door lock cover.

# Installation and connection

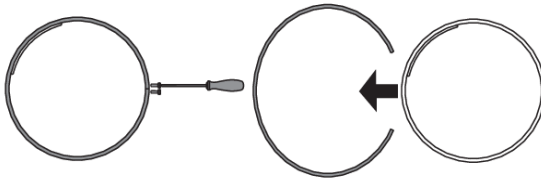


**6**

Undo the door hinge assembly (left) and the door latch assembly (right), switch their positions, and replace the screws (door hinge assembly to the right-hand side, door latch assembly to the left-hand side).

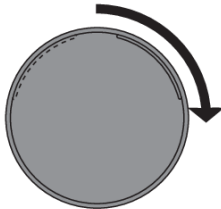
## INFORMATION!

Use a screwdriver to remove the plastic part more easily.



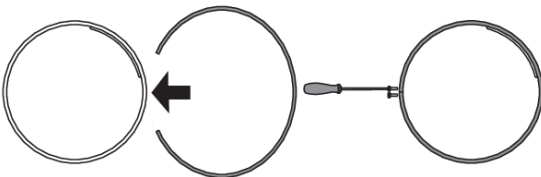
**7**

Undo the door ring and remove it temporarily.



**8**

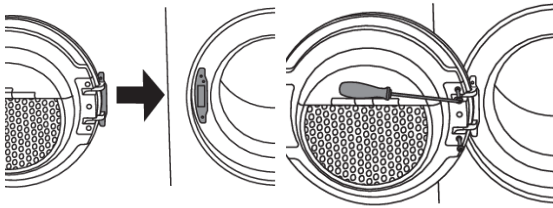
Rotate the door cover by 90° so that the sign indicating the opening of the door is on the other side.



**9**

Rotate the door ring by 180°, install it onto the door, and fasten it with screws.

# Installation and connection



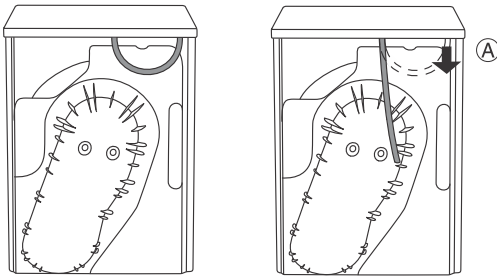
10

Install the door to the front and screw the door.

## Draining the condensate

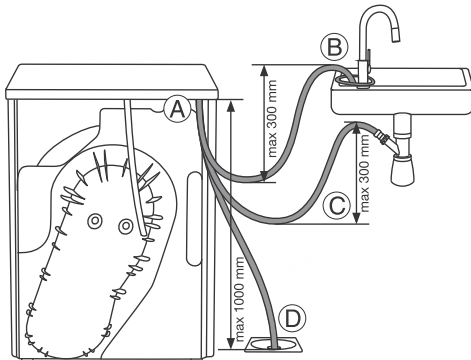
The moisture from the laundry is extracted in the condenser unit and accumulated in the condensate tank. Condensate tank has to be emptied regularly (see chapter "Cleaning and maintenance").

To simplified and avoid emptying and interruption of the drying cycle due to full condensate tank, run the condensate discharge tube located at the back of the appliance directly into a drain (see chapter "Settings/ Condensed water").



1

Remove the small short hose from the attachment (A).



2

Connect the supplied drain hose to the same attachment (A).

Run the condensate drain hose into a drain. Tie the hose onto a tap (B) so that it cannot slip during use.

The drain hose can also be fed into the washbasin siphon (C) or directly into the floor drain (D).

Then, the water is pumped directly into a washbasin, a siphon, or a floor drain.

## 💡 INFORMATION!

Do not pull the drain hose, and make sure it is not under tension, clamped, or bent.

# Installation and connection

## WARNING!

If you decide to run the condensate drain hose into a drain, siphon, or washbasin, make sure the hose is securely fastened. This will prevent any water spillage that could result in unexpected damage.

## WARNING!

Always use hoses that are supplied with the appliance.

## WARNING!

If the dryer is connected to an air exhaust system already used for another appliance, a non-return valve must be installed. Return flow into the dryer could damage the appliance and the non-return valve prevents such flow.

## Connecting to the power mains



### ELECTRIC SHOCK!

After installation, the dryer should stand still for two hours before it is connected to the power mains.

Connect the appliance to an earthed power outlet. After installation, the wall outlet should be freely accessible. The outlet should be fitted with an earth contact (in compliance with the relevant regulations).

If you have a tumble dryer with a 3 phase connection, the connection must be carried out by a qualified and authorized specialist.

## Connection upon delivery

|  |                    |   |
|--|--------------------|---|
|  | TYPE: TDXX.XXXXX   | MODEL: XXXXXX.X   |
|  | Art.No.: XXXXXX/XX | Ser.No.: XXXXXXXX   |
| XXX V ~  | XXXX W             | ⇌ XXA <sup>X</sup> kg   |
|  |                    |  |
| IPX4   | XX Hz              | Refrigerant: X XXXX   |
|  |                    | Volume: XXXX  |

Information about your dryer is indicated on the rating (type) plate.

Use the type A differential current protection switch.

### WARNING!

The dryer shall not be connected to the power mains using an extension cord.

### INFORMATION!

Do not connect the tumble dryer to an electrical outlet intended for an electric shaver or hair dryer.

### INFORMATION!

Any repair and maintenance pertaining to safety or performance should be done by trained experts.

## Coin operation

(Only available in some models)

The machine is prepared for coin operation.

Owner/distributor can find detailed informations in Service manual.

Such installation must be carried out by a qualified professional.

The coin meter shall be able to short circuit two signal lines for periods of up to 10 minutes.

This will allow the user to load the appliance, choose a program and start the program after inserting the coins.

# Installation and connection

"Please pay to continue" appears on the display when the machine is started with the main power switch (by pressing on button Start).

# Advices before drying

This chapter includes several advices on how to prepare the laundry from drying.

## Laundry sorting

Sort the laundry according to:

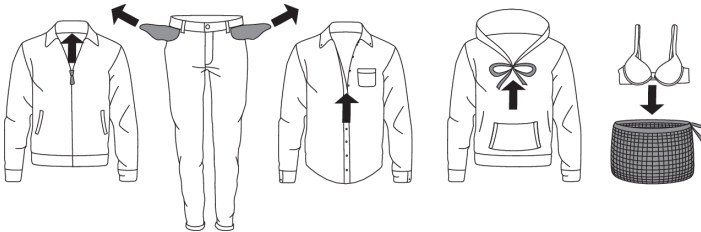
- type,
- fabric thickness.

For the most even drying, make sure the laundry is made of a similar material.

## Clothing

1. Close the buttons, zips, and hook-and-loop fasteners, so that they do not damage the fabric.
2. Turn the pockets inside out.
3. Place very sensitive clothes in a special-purpose laundry bag.

(The special purpose laundry bag is available as an optional accessory in general stores.)



## 💡 INFORMATION!

Laundry to be dried in the dryer should be spun at a minimum of 1000 rpm. Higher spinning speeds will save energy and cut drying time.

## 💡 INFORMATION!

If you decide to dry only one large item, we recommend drying it separately from smaller items of laundry.

## Laundry symbols



















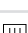

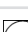
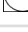

Observe the laundry symbols.

Textile maintenance symbols:


| 👕 Washing |                                |         |
|-----------|--------------------------------|---------|
| Normal    | Delicate                       |         |
| 👕<br>90   | Max. washing temperature 90 °C | 👕<br>30 |
| 👕<br>60   | Max. washing temperature 60 °C | 👕<br>30 |
| 👕<br>40   | Max. washing temperature 40 °C | 👕<br>30 |
| 👕<br>30   | Max. washing temperature 30 °C | 👕<br>30 |

# Advices before drying

Table continued from last page

|  |  |
|--|--|
|    | Hand wash only   |
|    | Do not wash  |
|    | <b>Bleaching</b>   |
|    | Bleaching in cool water                                      |
|    | Bleaching not allowed  |
|    | <b>Dry cleaning</b>  |
|    | Dry cleaning with all agents                                 |
|    | Perchloroethylene R11, R113, petroleum                       |
|    | Dry cleaning in kerosene, pure alcohol, and R113             |
|    | Dry cleaning not allowed                                     |
|    | <b>Ironing</b>   |
|    | Ironing with a hot iron with a maximum temperature of 200 °C |
|    | Ironing with a hot iron with a maximum temperature of 150°C  |
|    | Ironing with a warm iron with a maximum temperature of 110°C |
|    | Ironing not allowed  |
|    | <b>Natural drying</b>  |
|   | Drying on a flat surface                                     |
|  | Drying without prior spinning                                |
|  | Drying on a clothes line or a hanger                         |
|  | <b>Tumble drying</b>   |
|  | Drying at high temperatures                                  |
|  | Drying at low temperatures                                   |
|  | Tumble drying not allowed                                    |

## Materials (fabrics) suitable for drying in a tumble dryer


 Material is suitable for tumble drying. Clothes dried in a tumble dryer will be softer and lighter than air-dried clothes.



## INFORMATION!

The dryer does not cause any considerable wear of the fabric. The lint collected in the lint filter consists of dust and fabric fragments collected during the use of the laundry.

### **Materials (fabrics) that may not be dried in a tumble dryer**

 This symbol means that the material is not suitable for drying in a tumble dryer.

### **Never tumble dry the following:**

- clothing that was chemically cleaned (or dry-cleaned) at home,
- foam,
- glass fibres.

# Drying process, step by step

## STEP 1: Sort the fabrics

See chapter "Advices before drying"

### ⚡ INFORMATION!

Empty the pockets. Coins, nails etc. could damage the machine and the fabric.

## STEP 2: Turn on the main switch.



### Turning on

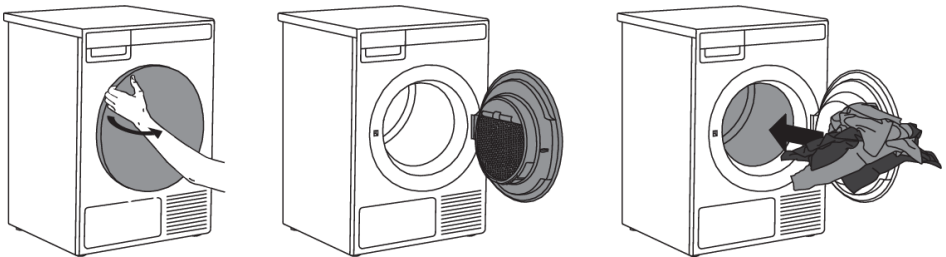
Press the  on/off button.

### Switching off

Press the  on/off button.

## STEP 3: Open the dryer door and insert the laundry.

Open the dryer door towards you.



Place the laundry into the empty dryer drum. Make sure there aren't any other objects among the laundry, such a detergent ball.

Such objects could melt and cause damage to the dryer or your laundry.

Do not overload the drum! (See program table and observe your nominal load as indicated on the rating plate.)

If the dryer drum is overloaded, the laundry will be more wrinkled and perhaps unevenly dried.

## STEP 4: Choose the drying program.

Choose the program by rotating the program selector knob in either direction. Confirm the program selection by pressing the button under the program.

# Drying process, step by step



Select the program based on the type and remaining moisture of the laundry you wish to dry.

Anticipated program duration is indicated on the display.

Choose between the following programs:

(owner/distributor can change parameters and rename the program)

|    | Program (factory default program) | Max kg* | Description   |
|----|-----------------------------------|---------|---|
| +  | AUTO EXTRA, Normal temp           | 7       | Use this program for non-sensitive cotton laundry. After drying, it will be completely dry and ready to be stored in the cupboard.        |
| A  | AUTO DRY, Normal temp             | 7       | Use this program for non-sensitive cotton laundry. After drying, it will be completely dry and ready to be stored in the cupboard.        |
| ⚙️ | AUTO NORMAL, Normal temp          | 7       | Use this program for non-sensitive cotton laundry of approximately the same thickness. After drying, it will be dry.                      |
| 👉👉 | AUTO HAND IRON, Normal temp       | 7       | Use this program for cotton laundry. After drying, hand ironing is required.  |
| 👉👉 | AUTO MACHINE IRON, Normal temp    | 7       | Use this program for cotton laundry. After drying, machine ironing is required.   |
| 👉👉 | MIX DRY                           | 3,5     | This program is used for synthetic or mixed fibre fabrics, such as multi-functional sport clothes. After drying, ironing is not required. |
| 👉👉 | MIX IRON                          | 3,5     | This program is used for synthetic or mixed fibre fabrics. After drying, ironing is required.   |
| 🕒  | TIME 80 min                       | 4       | Cycle will stop when set time is reached. The time program is suitable for small loads.   |
| 🕒  | TIME 60 min                       | 4       | Cycle will stop when set time is reached. The time program is suitable for small loads.   |
| 🕒  | TIME 40 min                       | 4       | Cycle will stop when set time is reached. The time program is suitable for small loads.   |
| 🕒  | TIME 20 min                       | 4       | Cycle will stop when set time is reached. The time program is suitable for small loads.   |
| 🌀  | AIRING 60 min                     | 2       | Use this program to just refresh or soften clothing.  |

# Drying process, step by step

\* Max. kg dry load

## INFORMATION!

If your laundry is not dried to the desired dryness level, use a more suitable programme.

### **STEP 5: Choosing the program settings**

Using the program settings, the drying programs can be further adjusted to your wishes. See chapter: SETTINGS.

#### **Only appliance owner/distributor may change the settings!**

Some program settings may not be available for your selected program.

## Delay Start

In the submenu of the selected program, you can set the start delay when you want the drying program to start after a certain time (from 1 hour to 100 hours, from the time you press the **Start** / Pause button). The estimated time until the end of drying will be displayed.

Use the program selector knob to set from 1 h to 100 hours in 1-hour steps.

Press the button under the selected time/duration to confirm the setting.

Press the **Start** button to start. When the countdown reaches zero, the selected drying program will start automatically.

To cancel the start delay, press the button Cancel.

Then press the Start button to start the program.

During the countdown to the delayed start, the display will switch off after 5 minutes.

Use the program selector knob or press any button, to reactivate it. The countdown to the start of the drying cycle will be displayed.

Display will switch on 1 minute before the start of the drying cycle.

After the countdown, drying time will be indicated on the display unit.

## STEP 6: Close the door and start the drying process.

Close the dryer door and press the **Start/**Pause button.



▶ Start (pressed briefly – start/resume)

|| Pause (short press of the button - pause)

Stop (press and hold for 3 seconds – stop or cancel)

## Remaining time

Depending on the selected program and load, anticipated drying time will be displayed in hours and minutes.

Actual drying time will depend on the selected program, load, type of laundry, spinning rate etc.

Actual drying time may be longer or shorter than initially displayed.

## Pausing, stopping or changing the program

To pause a program, briefly press the Start/Pause button.

To resume the program, press the **Start/**Pause button again.

The drying program may also be paused by opening the dryer door.

To resume the programme, simply close the door and press the **Start/**Pause button.

To stop and cancel the drying program, press the Start/Pause button and hold it for 3 seconds.

The selected program will be stopped and the cooling stage will begin. Cooling time depends on the selected program.

Only after the cooling is complete, can you use the program selector knob to select a new program and press the **Start/**Pause button.

## ⚠ WARNING!

The final drying cycle includes a cooling down stage without heater operation. It makes sure the laundry is of suitable temperature at the end of the program and that it can be taken from the dryer without risk of touch hot clothes.

A drying program can be paused using the ON/OFF button.

The tumble dryer will switch off.

# Drying process, step by step

## **STEP 7: End of program**

After the end of the drying program, the display will indicate that the drying has been finished.

If you have selected the "anti-crease" option, the dryer will continue to operate after the end of the drying cycle.

Open the door towards you and remove the laundry from the dryer.

Clean the net filter in the door (see chapter "Cleaning and maintenance").

Make sure the dryer drum is empty, then close the door.

5 minutes after the end of the program or last activation, the display will switch off to standby mode in order to save power.

The display will light up again if you press the ON/OFF button or open the dryer door.



### **INFORMATION!**

After each drying cycle, clean the net filter in the door and empty the condensate tank. See chapter "Cleaning and maintenance".



### **HOT SURFACE!**

A clogged net filter and heat pump filter may result in activation of the automatic overheating switch-off device. Clean the filter, wait for the machine to cool down, and try running it again. If the dryer still fails to start, call a service technician.




### **WARNING!**

After the drying process, unplug the dryer power cord from the power outlet.

If you have a tumble dryer with a 3-phase connection, do not pull the plug out of the power outlet.

## Only appliance owner/distributor may change the settings!

(owner/distributor should check Service manual)

| On display                                  | Setting   | Description   |
|---|---|---|
| <b>Cleaning the filter</b>                  | On/Off  |   |
| <b>Cleaning the door filter in the door</b> | 1 --> 10  |   |
| <b>Cleaning of water condenser</b>          | 10 --> 100  | (step 10)   |
| <b>Condensed water</b>                      | Drain/Tank  |   |
| <b>Payment system</b>                       | On/Off  |   |
| <b>Heater 2 activation</b>                  | On/Off  |   |
| <b>Change program</b>                       | On each program (some settings cannot be set on some programs)                      | By changing settings it is possible to create and customize your own program. Programme can be renamed.   |
| • Extra dry                                 | 0 --> 3   |   |
| • Anti-crease                               | Switching on, (1h --> 4h)   |   |
| • Save program                              | Override existing/Save as new   |   |
| <b>Time program</b>                         |   |   |
| • Time program 80 min                       | 20 --> 240 min  |   |
| • Time program 60 min                       | 20 --> 240 min  |   |
| • Time program 40 min                       | 20 --> 240 min  |   |
| • Time program 20 min                       | 20 --> 240 min  |   |
| • Save program                              | Override existing/Save as new   |   |
| <b>Child Lock</b>                           | On/Off  |   |
| <b>Programmes</b>                           |  | Selected program will be shown on display   |
| <b>Set Language</b>                         | Select your language - press the button under the flag                              | <ul style="list-style-type: none"> <li>• Select language: by rotating the program selector knob</li> <li>• Confirm language: by pressing button under the country flag</li> </ul> |

# Settings

Table continued from last page

| On display                          | Setting           | Description  |
|-------------------------------------|-------------------|--|
| <b>Temporary language selection</b> | On/Off            | (from 0 to 5)<br>You can select up to 5 languages, which will be available in the main menu. |
| <b>Sound setting</b>                | 0 --> 5           |  |
| <b>Display settings:</b>            |                   |  |
| • Brightness                        | 1 --> 5           |  |
| • Display the logo                  | On/Off            |  |
| <b>Standby mode</b>                 | Normal/No standby |  |
| <b>Detailed view</b>                | On/Off            |  |
| <b>Demo mode</b>                    | On/Off            |  |
| <b>Start delay</b>                  | On/Off            | 1h --> 100h  |
| <b>Time/icon mode</b>               | Time/icon         |  |
| <b>ID machine</b>                   | 0 --> xxx         |  |
| <b>WiFi settings</b>                |                   | By turning WiFi module On, the energy consumption will increase in standby mode.             |

## SOUNDS

(depending on the model)

### INFORMATION!

In the initial stage of drying or during drying, the compressor and the pump may cause noise which, however, does not affect the dryer operation.

Humming sound: this is the sound of the compressor unit. The level of noise depends on the program and the drying stage.

Whirring sound: from time to time, the compressor unit is ventilated.

Pumping or liquid flowing sound: the pump is pumping the condensate into the condensate tank.

Clicking sound: clicking noise is caused by automatic cleaning of the heat exchanger (compressor).

Rustling water sound: can be heard during automatic cleaning.

Rattling sound: can be heard during drying if laundry has any hard parts (buttons, zippers etc.)

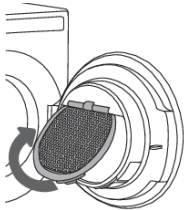


## INFORMATION!

Before cleaning, make sure to switch off the appliance and disconnect it from the power mains (unplug the power cord from the outlet).

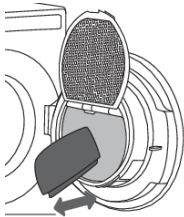
### **Cleaning the door net filter in the door**

Before cleaning, make sure to switch off the appliance and disconnect it from the power mains (unplug the power cord from the outlet).



**1**

Lift the net filter cover.



**2**

By hand or a cloth drag the net filter to remove the lining of fibers and threads.

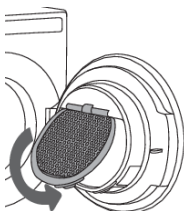
### **NOTE!**

The door net filter may feel quite loose when cleaning/removing fibers and threads. This is normal because of large net filter area in combination with high working temperatures inside the tumble dryer.



**3**

If necessary, clean the net filter housing and door gasket as well.

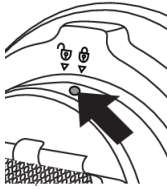


**4**

Close the net filter cover.

# Cleaning and maintenance

Table continued from last page



5

If it is necessary to clean the net filter from the back, unscrew the screw and turn the filter from the locked to the unlocked position. Pull out the entire filter unit and clean it thoroughly, and return the filter unit to its original position after cleaning. Turn the filter from the unlocked to the locked position and tighten the screw.

## 💡 INFORMATION!

Make sure you do not pinch your fingers with the filter cover.

## 💡 INFORMATION!

**Clean the door net filter after each drying cycle.**

## 💡 INFORMATION!

Never operate without a door net filter or if the door net filter is damaged.

## Emptying the condensate tank

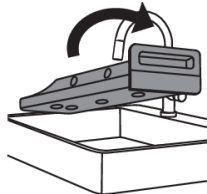
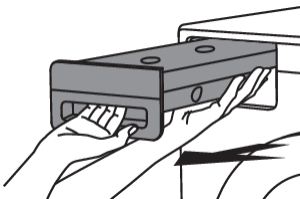
## 💡 INFORMATION!

Empty the condensate tank after each drying cycle.

If the condensate tank is overflowing the drying program will be paused automatically.

A warning will appear on the display unit that the condensate tank has to be emptied.

(Disregard this warning if you fed the condensate discharge hose into a drain, siphon, or a sink.)

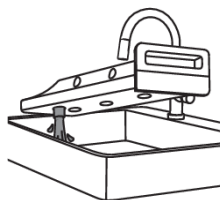
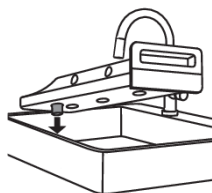


1

Pull out the condensate tank from the dryer, then turn it upside down over a washbasin, sink, or any suitably sized vessel.

# Cleaning and maintenance

Table continued from last page



**2**

Discharge the water through the condensate drain opening.

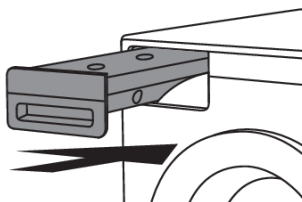
To make draining the tank easier, pull out the nozzle at the condensate drain.

## NOTE!

Some water will still remain in the condensate tank, after emptying the water.

**3**

Replace the condensate tank into the dryer housing.



## 💡 INFORMATION!

Water from the condensate tank is not drinkable. If thoroughly filtered, it can be used for ironing.

## ⚠️ WARNING!

Never add chemicals or fragrances into the condensate tank.

## 💡 INFORMATION!

Condensate tank does not require draining if the drain hose is connected directly to a washbasin or a bathroom floor drain (see chapter "Installation and connection/Draining the condensate").

## 💡 INFORMATION!

Before moving the dryer or before storing it in a non-heated room during the winter, the condensate tank has to be emptied.

# Cleaning and maintenance

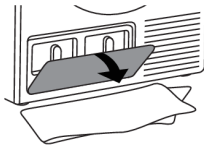
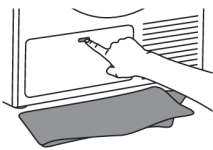
## Cleaning the heat pump filter

### 💡 INFORMATION!

Do not touch the inner metal parts of the heat exchanger with bare hands. Danger of injury on sharp parts. Use appropriate protection gloves when cleaning the heat exchanger.

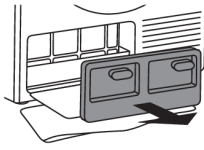
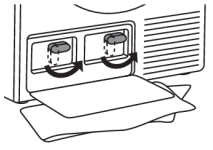
### 💡 INFORMATION!

Incorrect cleaning of the metal fins of the heat exchanger can permanently damage the tumble dryer. Do not press on the metal fins with hard objects like for example the plastic tube of a vacuum cleaner.



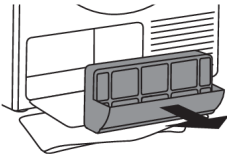
1

During cleaning, some water may be spilled. It is therefore recommended to place an absorbent cloth on the floor. Open the outer cover.



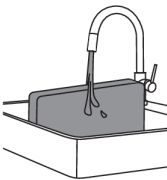
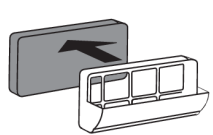
2

Hold the levers on the inside cover and rotate them upwards. Remove the inside cover.



3

Use the handle to pull out the heat pump filter.



4

Pull the foam part of the heat pump filter from the housing. Wash it under running water and dry it before replacing it in the filter housing.

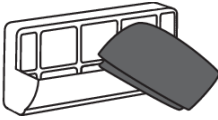
The filter may be washed in the washing machine, with the rinse program on low spin speed. Dry the filter before replacing it in the filter housing.

### 💡 INFORMATION!

Clean the foam filter at least after every 30 drying cycles or if necessary.

# Cleaning and maintenance

Table continued from last page



**5**

Use a soft dry cloth to also clean the heat pump filter housing and net.

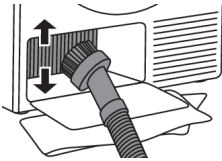
## INFORMATION!

Lower part of the housing contains a strainer which shall be cleaned thoroughly.

## INFORMATION!

Clean the heat pump filter housing and net after every 30 drying cycles or if necessary.

With automatic heat pump net filter cleaning (only available in some models), a few drops of water may drip on the floor after the filter is removed; therefore, lay a cloth on the floor.

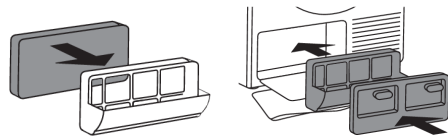


**6**

The dust and dirt in the metal fins of the heat exchanger can be cleaned with a vacuum cleaner and a soft brush attachment.

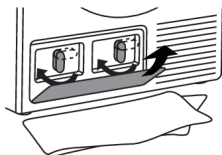
Without pressing, gently move the brush attachment only in the direction of the metal fins from top to bottom. Too much pressure can damage or bend the metal fins of the heat exchanger.

We recommend you clean the heat exchanger at least every twelve months.



**7**

Reassemble the foam filter and the filter housing.



**8**

Reinstall the inside cover and turn attachments to the locked position.

Close the outer cover.

# Cleaning and maintenance

## 💡 INFORMATION!

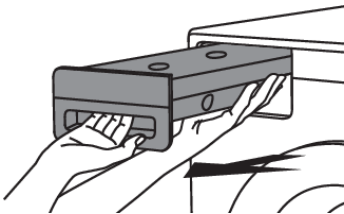
The heat pump filter has to be correctly placed into its slot. Otherwise, the heat exchanger installed inside the dryer may be clogged.

### Cleaning the steam generator tank filter and self-cleaning system

## 💡 INFORMATION!

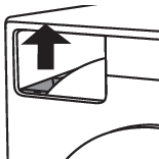
Each time you empty the condensate tank, clean the steam generator tank filter and self-cleaning system as well.

The filter is located in the tank housing (visible when the condensate tank is removed).



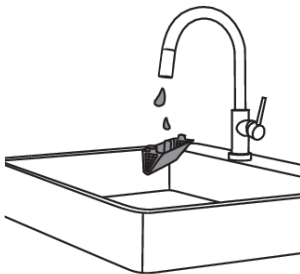
**1**

Remove the condensate tank



**2**

Remove the filter from the slot in the condensate tank housing.



**3**

Clean the filter thoroughly under running water. If necessary, clean the filter slot as well.

## 💡 INFORMATION!

When pulling out the filter, make sure not to discard the lint and fibre accumulated during operation back inside, as this may clog the system.

## 💡 INFORMATION!

Replace the filter correctly into the slot (otherwise, the filter will not perform its function, which may result in clogging of the system).

## 💡 INFORMATION!

The frequency of cleaning the steam generator vessel filter is the same, if you run drain hose for condensed water directly into the drain, siphon or washbasin.

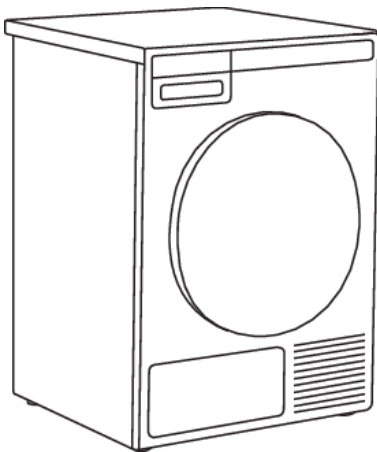
### Cleaning the appliance exterior

Clean the appliance exterior and the display unit using a soft damp cotton cloth and water. **Do not use solvents or abrasive cleaners that could damage the appliance** (please observe the recommendations and warnings provided by the manufacturers of the cleaning agents).

Wipe all parts of the dryer with a soft cloth until dry.

## 💡 INFORMATION!

Keep the area around the dryer clean and cool. Dust, heat, and humidity will extend the drying time.



## 💡 INFORMATION!

Always disconnect the dryer from the power mains before cleaning.

In the case of a 3 phase connection of the appliance, switch off the main socket switch.

# Errors – what to do?

Disturbances from the environment (e.g. the power grid) may result in various error reports (see Troubleshooting table). In such case:

- Switch off the appliance, wait for 1 minute, switch the appliance back on, and repeat the drying program.
- If the error persists, call an authorized service center.
- You will be able to solve most of the **problems** in appliance operation by yourself (see below Troubleshooting table ).
- **Repairs** may only be carried out by an adequately trained person.
- Repair or any warranty claim resulting from incorrect connection or use of the dryer shall not be covered by the warranty. In such cases, the costs of repair shall be charged to the user.

## INFORMATION!

The warranty does not cover the errors or failures resulting from disturbances from the environment (lightning strike, power grid failures, natural disasters etc.).

| Problem/error  | Cause  | What to do?   |
|--|--|---|
| <b>The machine will not start.</b>   | • The main switch is not switched on.  | • Check whether the main switch is on.  |
|  | • There is no voltage in the power outlet.   | • Check the fuse.<br>• Check if the power cord plug is correctly inserted into the power outlet.  |
| <b>There is voltage in the outlet, but the drum does not spin ...<br/>The dryer does not work.</b> | • Program was not started in accordance with the instructions.   | • Re-read the instructions for use again.   |
|  | • Door might be open.  | • Check if the door is closed properly.   |
|  | • The condensate tank is full (only applies to condensation dryer and the dryer with a heat pump).   | • Empty the condensate tank (see section "CLEANING AND MAINTENANCE") (only applies to condensation dryer and the dryer with a heat pump).   |
|  | • Delayed start might be activated.  | • To cancel the Delayed Start option, press 5 the Skip button.  |
| <b>The machine stops operating completely during a program.</b>                                    | • The door net filter may be clogged. As a result, the temperature in the dryer rises, which in turn causes overheating, and the dryer switches off. | • Clean the door net filter (see chapter "CLEANING AND MAINTENANCE").<br>• Wait for the machine to cool down, and try running it again. If the dryer still fails to start, call service centre. |



Table continued from last page

| Problem/error                                      | Cause   | What to do?  |
|--|---|--|
| <b>Laundry not dried or drying takes too long.</b> | <ul style="list-style-type: none"> <li>Filters are not clean.</li> </ul>  | <ul style="list-style-type: none"> <li>Clean the filters (see chapter "CLEANING AND MAINTENANCE").</li> </ul>  |
|  | <ul style="list-style-type: none"> <li>Dryer is placed in a closed room; room that is too cold; or room that is too small and the air overheats as a result.</li> </ul>   | <ul style="list-style-type: none"> <li>Make sure there is adequate supply of fresh air to the dryer; for example, open the door and/or window.</li> <li>Check if the temperature in the room where the dryer is installed is too high or too low.</li> </ul>       |
|  | <ul style="list-style-type: none"> <li>Laundry was not sufficiently wrung or spun.</li> </ul>   | <ul style="list-style-type: none"> <li>If the load is still wet after completed drying cycle, an appropriate drying program should be run again (after cleaning filters).</li> </ul>   |
|  | <ul style="list-style-type: none"> <li>Amount of laundry dried in the appliance is too large or insufficient.</li> </ul>  | <ul style="list-style-type: none"> <li>Use a suitable program or extra functions.</li> </ul>   |
|  | <ul style="list-style-type: none"> <li>Laundry (such as bedding) gets tangled into large balls.</li> </ul>  | <ul style="list-style-type: none"> <li>Close the buttons or zippers on the laundry before drying. Select a suitable program.</li> <li>After the drying process, loosen the laundry and select an additional drying program (e.g. timed drying program).</li> </ul> |
| <b>Unevenly dried laundry.</b>                     | <ul style="list-style-type: none"> <li>Laundry of varying types and thickness, and excessive amount of laundry.</li> </ul>  | <ul style="list-style-type: none"> <li>Make sure you have sorted the laundry by type and thickness, whether you have added a suitable amount of laundry to the drum, and whether you have selected a suitable program.</li> </ul>                                  |
| <b>A slight hitting noise appears.</b>             | <ul style="list-style-type: none"> <li>If the dryer is out of use for a long period of time, the same points of load-bearing elements or components are under stress for a long time, causing temporary deformation.</li> </ul> | <ul style="list-style-type: none"> <li>The noise will subside without any intervention.</li> </ul>   |
| <b>The door opens during drying.</b>               | <ul style="list-style-type: none"> <li>Excessive load on the door (too much laundry in the drum).</li> </ul>  | <ul style="list-style-type: none"> <li>Reduce the amount of laundry.</li> </ul>  |

# Errors – what to do?

## Failure display

In case of a failure while a program is in progress, the relevant Error X is indicated on the display unit.



Press and hold the INFO button to display the error description.

Switch off the dryer and turn it back on.

Errors indicated on the display unit (depending on the model) may include the following:

| Problem/error | Error indication on the display             | What to do?   |
|---------------|---|---|
| <b>E0</b>     | Control unit failure.                       | Control unit failure.<br>Call service centre.   |
| <b>E1</b>     | Thermistor error.                           | Temperature sensor failure.<br>Call service centre.   |
| <b>E2</b>     | Communication error.                        | Communication error.<br>Call service centre.  |
| <b>E3</b>     | Pump error.                                 | Failure on the pump for pumping the condensate into the condensate tank<br>Call service centre. |
| <b>E6</b>     | Relay failure.                              | Control unit failure.<br>Call service centre.   |
| <b>E7</b>     | Door failure.                               | Control unit failure.<br>Call service centre.   |
| <b>E8</b>     | Button failure.                             | Control unit failure.<br>Call service centre.   |
| <b>E9</b>     | PB/UI software versions are not compatible. | Call service centre.  |
| <b>E10</b>    | EADBS communication error.                  | Call service centre.  |
| <b>E11</b>    | Motor communication error.                  | Call service centre.  |

## INFORMATION before, during, and after the program

(depending on the model)

| Error indication on the display                            | What to do?   |
|--|---|
| EN: Please close the door before pressing start.           | Close the dryer door before starting or resuming the program.           |
| EN: Option not available at this phase of cycle.           | This option is not available. Select an option that is still available. |
| EN: Cycle was interrupted by power failure. Please resume. | Press the <b>Start</b> /Pause button to restart or resume the program.  |
| EN: Please empty the tank before resuming a cycle.         | See chapter "CLEANING AND MAINTENANCE".                                 |
| EN: Clean door filter.                                     | See chapter "CLEANING AND MAINTENANCE".                                 |
| EN: Clean the condenser unit.                              | See chapter "CLEANING AND MAINTENANCE".                                 |
| EN: Please empty the water tank and clean door filter.     | See chapter "CLEANING AND MAINTENANCE".                                 |
| EN: Child lock is on. Press buttons for 3 sec to unlock.   | See chapter "SETTINGS".   |

# Service

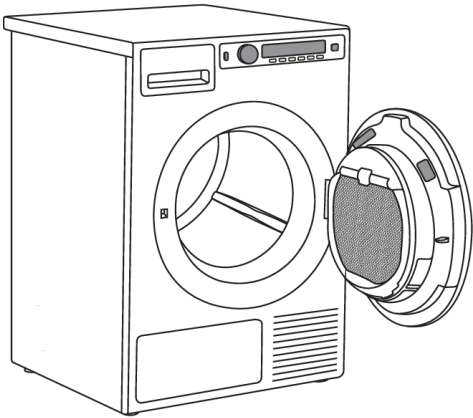
## Before calling a service technician

See the chapters "Troubleshooting and "Cleaning and maintenance" and see if you can resolve the problem yourself.

When you contact a service centre, please state the model (1), type (2), and serial number (3) of your dryer.

Model, type, and serial number are indicated on the rating (type) plate located on the interior side of the dryer door.

QR and AUID code are located on the inside of the drying machine door as well.





### WARNING!

In case of a failure, only use approved spare parts by authorized manufacturers.

### WARNING!

Repair or any warranty claim resulting from incorrect connection or use of the dryer shall not be covered by the warranty. In such cases, the costs of repair shall be charged to the user.

|  |                             |   |
|--|-----------------------------|---|
|  | TYPE: TDXX.XXXXX            | MODEL: XXXXXX.X   |
|  | Art.No.: XXXXXX/XX          | Ser.No.: XXXXXXXX   |
| XXX V ~  | XXXXW ⇌ XXA <sup>X</sup> kg |  |
| IPX4   | XX Hz                       | Refrigerant: X XXXX    Volume: XXXX   |

## Technical information

|                     |   |
|---------------------|---|
| Height              | 850 mm  |
| Width               | 595 mm  |
| Depth               | 654 mm  |
| Weight (net)        | 57,0/54,8 kg (depending on the model)                                       |
| Drum volume         | 117 l   |
| Maximum drying load | See rating plate  |
| Rated power         | See rating plate  |
| Drum material       | Stainless steel   |
| Housing material    | Hot-dip galvanized and powder coated sheet metal, or stainless steel sheet. |

This product contains fluorinated greenhouse gases.

|                            |          |
|----------------------------|----------|
| Type of refrigerant        | R450a    |
| Quantity of refrigerant    | 0,510 kg |
| Total GWP                  | 604      |
| CO <sub>2</sub> equivalent | 0,309 t  |
| Hermetically sealed.       |          |

# Program chart

The table indicates the power consumption and time values for drying of a test batch of laundry with various loads and after spinning at various rates, consistently with the EN61121.

The following requirements apply to the consumption values specified below.

|                       |                  |
|-----------------------|------------------|
| Inlet air temperature | room temperature |
| Inlet air humidity    | 50–60%           |
| Drying temperature    | Normal           |

## TDC1771H

| Program                           | Amount | Spinning speed (rpm) | Energy consumption, approximately (kWh)* | Program duration, approximately (min)* |
|-----------------------------------|--------|----------------------|--|--|
| AUTO EXTRA,<br>Normal temp        | ⊖      | 1400                 | 1,80                                     | 165                                    |
|                                   | ⊖      | 1600                 | 1,76                                     | 158                                    |
| AUTO DRY,<br>Normal temp          | ⊖      | 1400                 | 1,50                                     | 145                                    |
|                                   | ⊖      | 1600                 | 1,46                                     | 139                                    |
| AUTO NORMAL,<br>Normal temp       | ⊖      | 1000                 | 1,45                                     | 140                                    |
|                                   | ⊖      | 1400                 | 1,25                                     | 120                                    |
|                                   | ⊖      | 1600                 | 1,16                                     | 115                                    |
| AUTO HAND IRON,<br>Normal temp    | ⊖      | 1400                 | 1,15                                     | 115                                    |
|                                   | ⊖      | 1600                 | 1,01                                     | 107                                    |
| AUTO MACHINE IRON,<br>Normal temp | ⊖      | 1000                 | 1,10                                     | 110                                    |
|                                   | ⊖      | 1400                 | 0,90                                     | 95                                     |
|                                   | ⊖      | 1600                 | 0,81                                     | 86                                     |
| MIX DRY                           | ⊖      | 1200                 | 0,65                                     | 60                                     |
| MIX IRON                          | ⊖      | 1000                 | 0,50                                     | 50                                     |

⊖ full load (7 kg)

*Table continued from last page*

⊖ partial load

\* Due to deviations in terms of type and amount of laundry, spinning, power supply oscillation, and environment temperature and humidity, the values measured at the user may differ from the one stated in the table.

## Disposal / recycling of packaging



Our product packaging is made of environmentally friendly materials that can be recycled, disposed of, or destroyed without any hazard to the environment. To this end, packaging materials are labelled appropriately.

The symbol on the product or its packaging indicates that the product should not be treated as normal household waste. Take the product to an authorized collection centre for waste electric and electronic equipment processing.

When disposing of an appliance, at the end of its useful life, remove all power cords and destroy the door latch and switch to prevent the door from locking or latching (child safety).

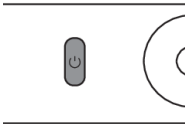
Correct disposal of the product will help prevent any negative effects on the environment and health of people which could occur in case of incorrect product removal. For detailed information on removal and processing of the product, please contact the relevant authority in charge of waste management, your waste disposal service, or the store where you bought the product.





## 1. Sort the fabrics

Sort the fabric by type and by how heavily soiled the laundry is. Observe the drying symbols on the laundry labels. Close the zippers, hook-and-loop fasteners and buttons.

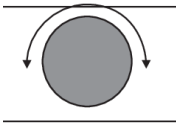


## 2. Switch on the main ON/OFF switch



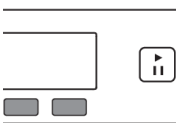
## 3. Open the dryer door and insert the laundry.

Before doing so, make sure the drum is empty.



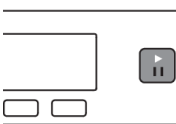
## 4. Choose the drying program

Turn the program selector knob to the desired drying program.



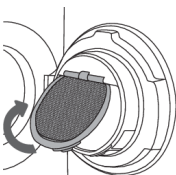
## 5. Choose the program settings

Program settings can be set for some programs. See chapter: SETTINGS



## 6. Close the dryer door and press the Start/Pause BUTTON.

Anticipated drying time, in hours and minutes, will be indicated on the display.



## 7. End of program

Open the door and remove the laundry from the dryer.

Clean the filters. See chapter "CLEANING AND MAINTENANCE".

Close the door.

Switch off the main on/off switch.

Unplug the dryer power cord from the power outlet (unless you have a tumble dryer with a 3phase connection)

# ASKO

Inspired by Scandinavia

Gorenje, Partizanska 12, 3320 Velenje, Slovenija • [www.asko.com](http://www.asko.com)



855760-a11



***We reserve the right to make changes.***