

Mounting Instructions

Product: Drying machine	External systems on professional dryers	Reference: Service Support
Date: 25.10.2020		PS-20-05 TD-EADBS

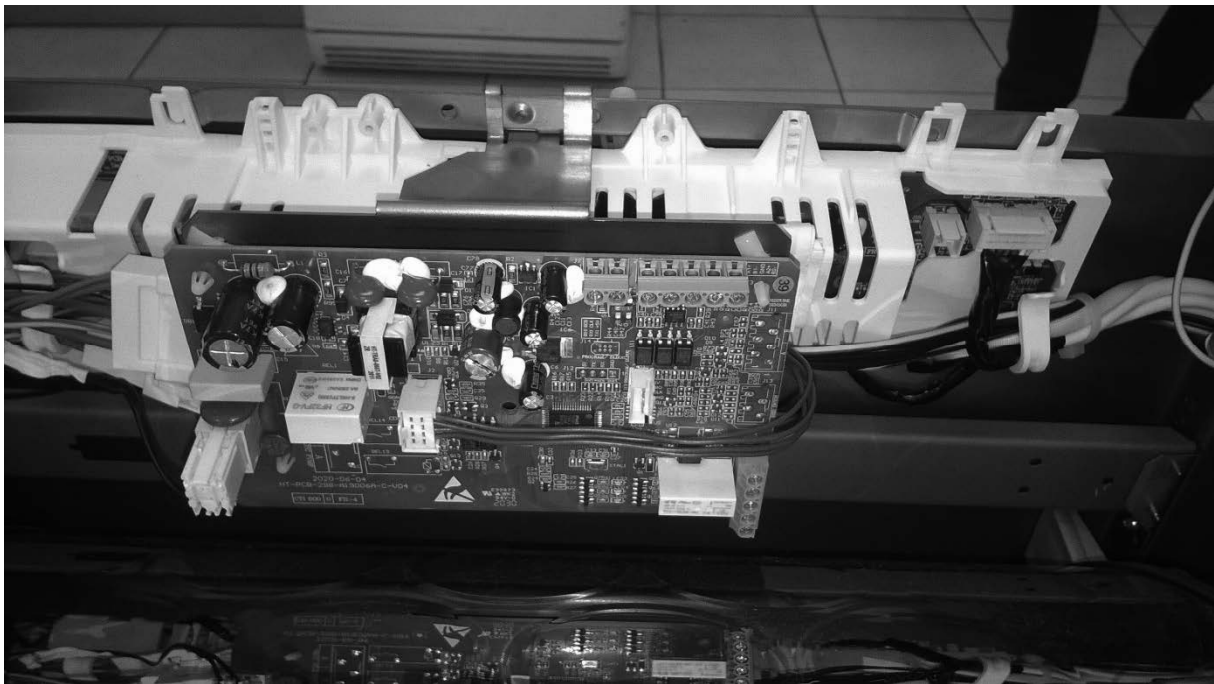
This instruction is for Professional Drying machine to install EADBS unit and Booking system BEAS.

1.EADBS installation KIT

Kit 842957 include:

1 x 824525 EADBS KIT

1 x 353700 Screw

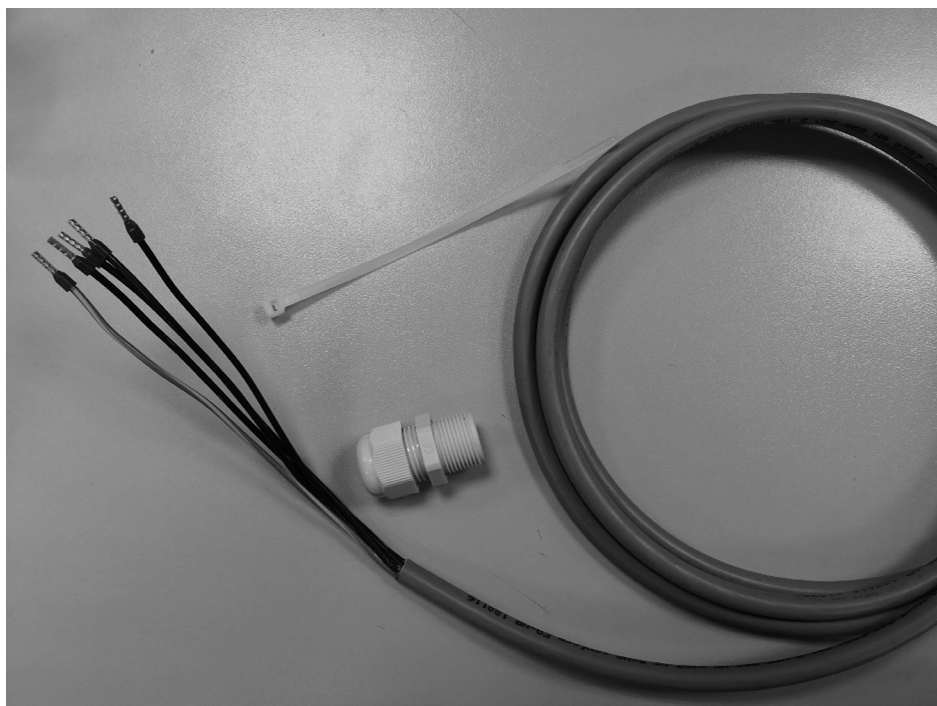


Fix the unit 824525 with 1 screw as shown above.

Mounting Instructions

2.Booking system kit

This instruction is for drying machine fitted with BEAS cable.

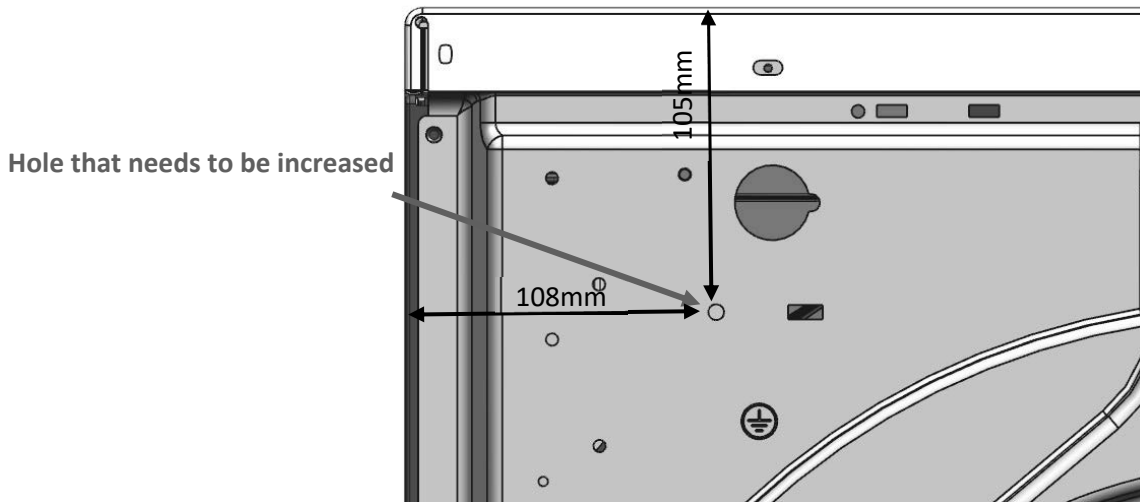


Kit includes:

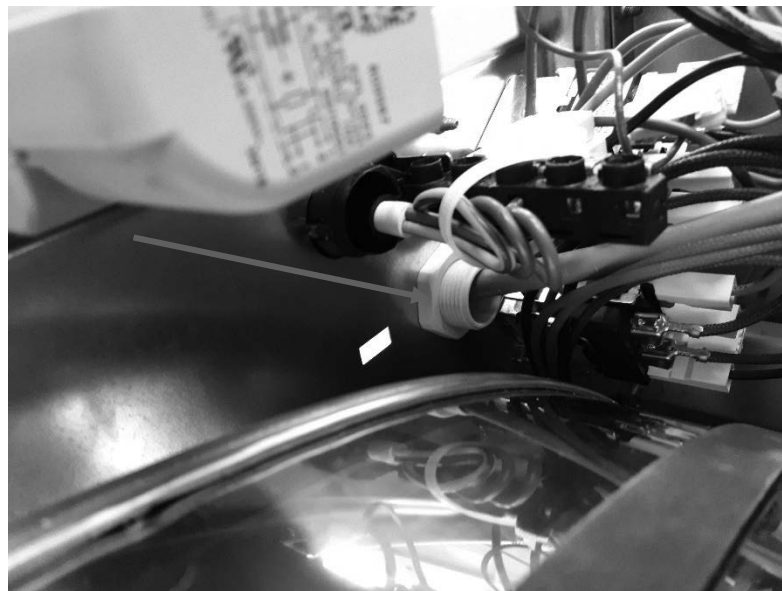
- 1x BEAS cable
- 1x cable gland
- 1x cable tie

Mounting Instructions

Installation of BEAS cable for booking system.

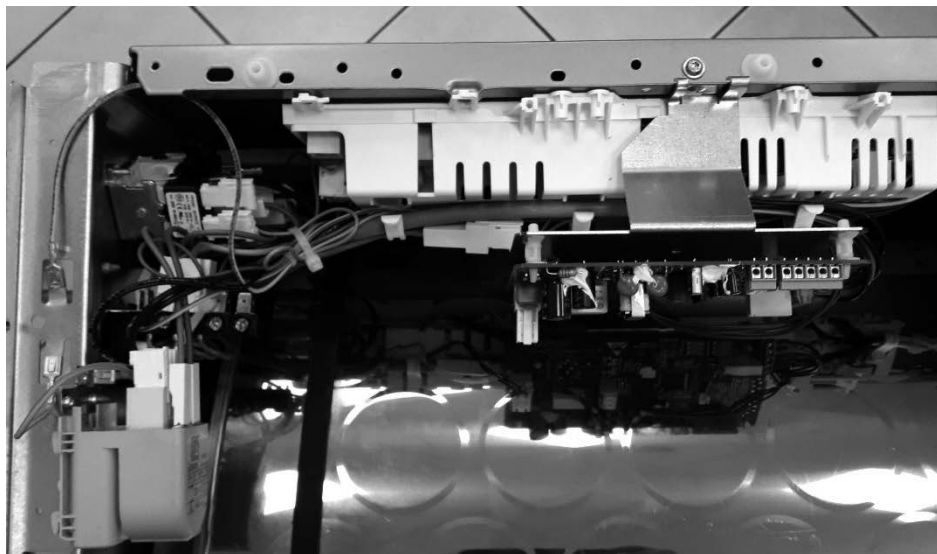


1. Diameter of hole which is marked on the picture needs to be increased from $\varnothing 5.5\text{mm}$ to $\varnothing 21\text{mm}$.



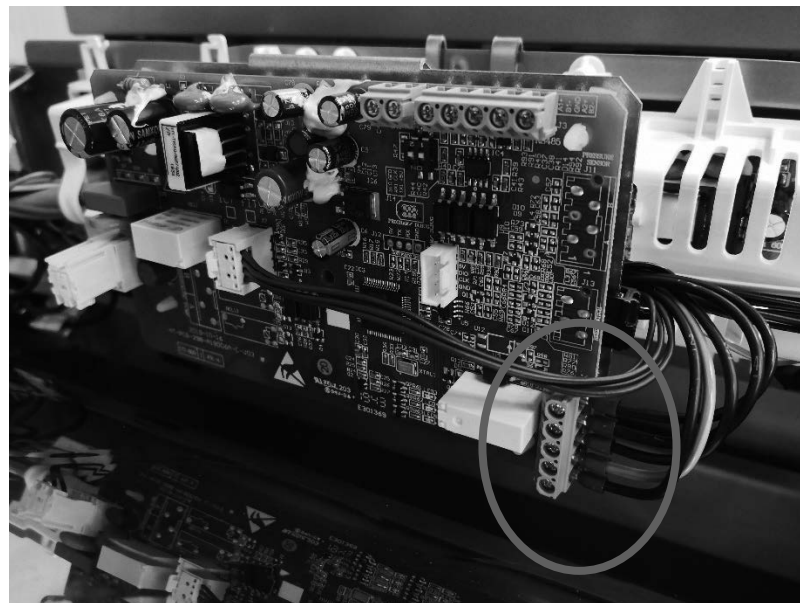
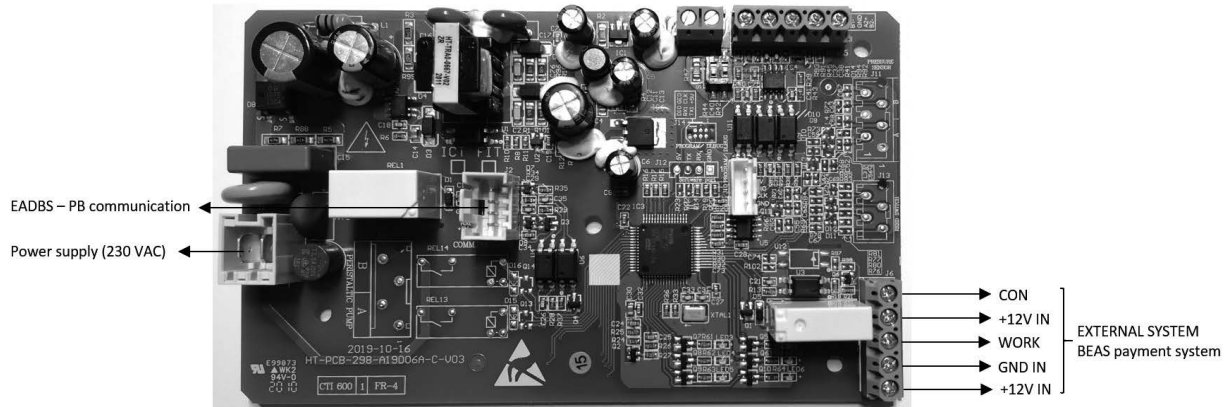
2. Install the cable through grommet as shown on picture above.

Mounting Instructions



3. Route the cables as shown on the picture above.

Mounting Instructions



4. Connect the wires on relay board (EADBS).

Mounting Instructions



5. Route the cables as shown on picture above, use cable tie to hold the cables together.

Mounting Instructions



6. Where cable is routed through grommet, screw the grommet nut very tight, the cable pull out force of **>100N** and rotational force of **≥0,35Nm** without movement must be assured!



en (12-20)