



INSTRUCTIONS FOR USE

Cooker hood

EN

CBB761S

CBB861S

Contents

Use	3	Switching on the timer	9
Introduction	3	Switching on recirculation mode	10
Description hood	4	Switching off recirculation mode	10
Description button control	4	Clean Air function	10
Operation	5	Switching the light on and off	11
Switching extraction on and off	5	Changing the colour lighting temperature	11
Switch on the boost setting	5	Maintenance	12
Switching on the timer	5	Cleaning	12
Switching on recirculation mode	6	Filter indicator	14
Switching off recirculation mode	6	Lighting	14
Clean Air function	6	Battery of the remote	15
Switching the light on and off	7	Technical data	16
Changing the colour temperature	7	EU Product Sheet	16
Remote control	8	EU Product Fiche	17
Description remote control	8	Environmental aspects	18
Pairing the remote	8	Tips for energy-efficient cooking with	
Switching extraction on and off	9	hoods	18
Switch on the boost setting	9	Disposal of the appliance and packaging	18

Introduction

On reading these user manuals you will soon become familiar with the features of this appliance. Please read the appliance's safety and maintenance instructions.

Compliance information

Radio equipment type	Cooker hood (Built-in Unit)
Operating frequency range	2402 -2477 MHz (16 channels)
Maximum output power	-5.2 dBm EIRP average (calculated)
Maximum antenna gain	-7 dBi

Hereby, ASKO Appliances AB declares that the radio equipment type Cooker hood (Ceiling unit) is in compliance with Directive 2014/53/EU.

The following symbols are used throughout the manual and they have the following meanings:

INFORMATION!

Information, advice, tip, or recommendation

WARNING!

Warning – general danger

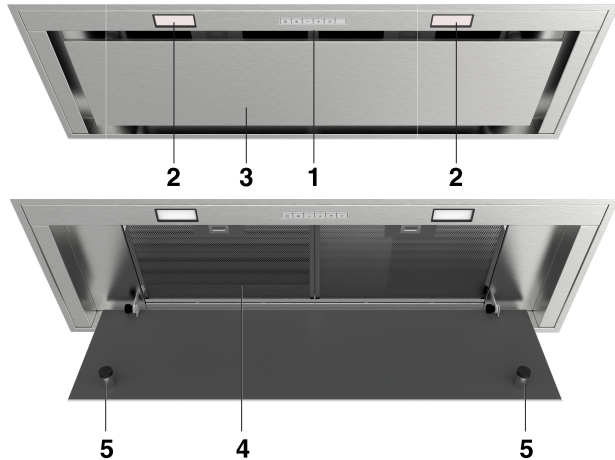
It is important that you carefully read the instructions.

WARNING!

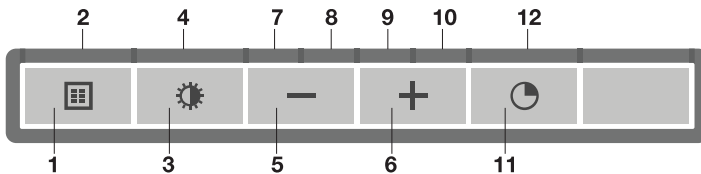
Before use, read the separate safety instructions first!

Description hood

1. Button Control
2. LED spot
3. Edge extraction panel
4. Grease filter
5. Magnet



Description button control



1. Filter reset button, signals when filters require cleaning
2. Filter indicator
3. Lighting button, switches on/off and dims the lighting
4. Light indicator
5. Speed down button, reduces air extraction capacity and switches off
6. Speed up button, switches on and increases air extraction capacity
7. Speed level 1 indicator
8. Speed level 2 indicator
9. Speed level 3 indicator
10. Speed level 4/boost indicator
11. Timer function, turns off hood after time
12. Timer indicator

Switching extraction on and off

1. Press the '+' button.

The cooker hood will switch on at the lowest setting.

2. Press the '+' button again for a higher fan setting. Press and hold the '+' button for 1 second to select the highest setting (boost).

3. Press the '-' key to select a lower setting.

The extraction setting is indicated in the speed level indicators.

Each light area represents a speed level. Speed level indicator 4 also serves as a boost indicator when it blinks.

4. If the extraction setting is set at 1, you can switch off the cooker hood by quickly pressing and releasing the '-' button.
5. To switch off the cooker hood from, press and hold the '-' button for at least 1 second.



Switch on the boost setting

1. Press and hold the '+' button for at least 1 second.

The boost setting is switched on for 10 minutes. The speed level 4 indicator will flash during this period. The original extraction setting will be reactivated after this period.

2. Press and release the '-' key to switch off the boost setting.



NOTE!

If the boost setting has been selected, the timer function cannot be activated.

Switching on the timer

1. Press the timer key.

The timer indicator will start to blink.

The cooker hood will switch off automatically after 10 minutes.

2. Switch off the timer function by pressing a random button (except the one for lighting).



Operation

TIP!

The cooker hood can be used in extraction mode or recirculation mode. The air extraction capacity is adapted to the selected mode. The hood will start up in the default extraction mode. It has to be reset for recirculation mode.

With an RMS kit (recirculation modification set) the air will first be cleaned by the grease filters and then odours will be filtered by the charcoal filter. The cleaned air is recirculated back into the kitchen.

Switching on recirculation mode

Simultaneously press and hold the timer button and the light button until the filter indicator flashes 3 times.

The carbon filter indicator is activated.

Switching off recirculation mode

Simultaneously press and hold the timer button and the light button until the filter indicator lights up for 3 seconds and then turns off.

Clean Air function

The Clean Air function allows you to freshen the air in your kitchen for a maximum of 24 hours at level 1.

1. Switch off the cooker hood.
2. Press and hold the timer button for approximately 3 seconds.

The cooker hood will switch on automatically for 10 minutes every hour at the lowest speed setting. During extraction the display will show a fast moving 'snake'. When the hood switches off after 10 minutes, the display will show a slow moving 'snake' until the hood switches on again after 50 minutes.

3. Switch off the Clean Air function in the meantime by pressing a random button (any button other than the light button).



Switching the light on and off

1. Quickly press and release the light button.

The light switches on at maximum strength.

2. Press and hold the lighting button to set the lighting strength.
3. To turn off the light, quickly press and release the light button while the light is on.

The lighting changes from maximum to minimum strength and vice versa.



Changing the colour temperature

You can adjust the lighting temperature.

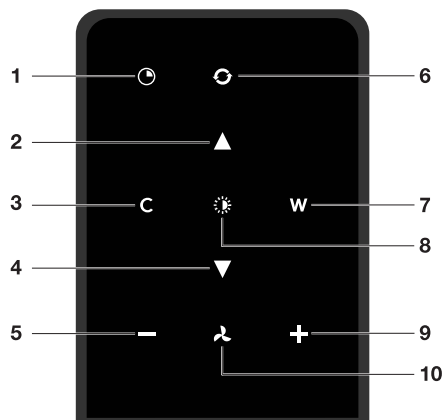
Press and hold the light button. Press the '-' button to make the light 'colder' or press the '+' button to make the light 'warmer'.

Remote control

Description remote control

NOTE!

The remote control is available as an accessory for this cooker hood and is not included with this appliance.



1. Timer function
2. Increase light intensity
3. Colder light temperature
4. Decrease light intensity
5. Decrease air extraction capacity
6. Clean Air function
7. Warmer light temperature
8. Switch on/off lighting
9. Increase air extraction capacity
10. Fan on/off

Pairing the remote

This remote control must be paired to the cooker hood before first use.

1. Start up the appliance (power on). Press and hold the '-' and '+' for 3 seconds. The hood will start 'pairing mode' for 5 minutes.



2. Activate the 'Remote pairing mode' by holding 'c' and 'w' for 3 sec.
3. During pairing all the indicators on the hood and remote will blink. All indicators will turn off when the connection is established.

If the connection is not established repeat the entire pairing process.



NOTE!

Remote control will go into standby after 30 seconds. The remote will wake up when it is picked up or detects movement.

Switching extraction on and off

1. Press and hold the 'Fan' key on the remote for 1 second.

The cooker hood will switch on at the lowest setting.

2. Press the '+' key again for a higher fan setting. Press and hold the '+' key for 1 second to select the highest setting (boost).
3. Press the '-' key to select a lower setting.
The extraction setting is indicated by the speed level indicators on the hood.
4. To switch off the cooker hood, press and hold the 'Fan' key for 1 second.



NOTE!

Lighting and motor key must be pressed for at least 1 second. This is to prevent the functions from being accidentally switched on or off.

Switch on the boost setting

1. Press and hold the '+' button for at least 1 second.

The boost setting is switched on for 10 minutes. The speed level 4 indicator will flash during this period. The original extraction setting will be reactivated after this period.

2. Press and release the '-' key to switch off the boost setting.



NOTE!

If the boost setting has been selected, the timer function cannot be activated.

Switching on the timer

1. Press the timer key.

The timer indicator will start to blink.

The cooker hood will switch off automatically after 10 minutes.

2. Switch off the timer function by pressing a random button (except the one for lighting).



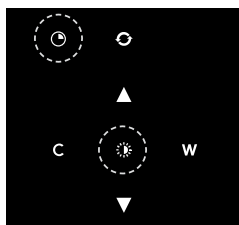
Remote control

TIP!

The cooker hood can be used in extraction mode or recirculation mode. The air extraction capacity is adapted to the selected mode. The hood will start up in the default extraction mode. It has to be reset for recirculation mode.

With an RMS kit (Recirculation modification set) the air will first be cleaned by the grease filters and then odours will be filtered by the charcoal filter. The cleaned air is recirculated back into the kitchen.

Switching on recirculation mode



When the light and fan are off, simultaneously hold the timer key and the light key until the filter indicator flashes 3 times.

The carbon filter indicator is activated.

Switching off recirculation mode

When the light and fan are off, simultaneously hold the timer key and the light key until the filter indicator lights up for 3 seconds and then turns off.

Clean Air function

The Clean Air function allows you to freshen the air in your kitchen for a maximum of 24 hours at level 1.

1. Switch off the cooker hood.
2. Press and hold the 'clean air' key for approximately 3 seconds.

The cooker hood will switch on automatically for 10 minutes every hour at the lowest speed setting. During extraction the display will show a fast moving 'snake'. When the hood switches off after 10 minutes, the display will show a slow moving 'snake' until the hood switches on again after 50 minutes.

3. Switch off the Clean Air function by pressing the timer, clean air, '-' or '+' keys (any key other than the light key).

Switching the light on and off

1. Press and hold the light key for 1 second.

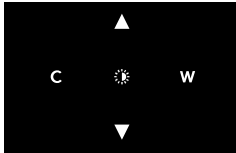
The light switches on at maximum strength.

2. Press and hold the 'increase light' or 'decrease light' key to set the lighting intensity.
3. To turn off the light, press and hold the light key for 1 second.

NOTE!

Lighting and motor key must be pressed for at least 1 second. This is to prevent the functions from being accidentally switched on or off.

Changing the colour lighting temperature



You can adjust the lighting temperature.

1. Press and hold the light key for 1 second.

The light switches on at maximum strength.

2. Press the 'C' key to make the light 'colder' or press the 'W' key to make the light 'warmer'.

Maintenance

Cleaning

WARNING!

Important! For all maintenance, first switch off the mains power to the cooker hood by pulling the plug out of the socket or by turning off the home's master switch. The hood needs to be cleaned regularly, both inside as well as outside (at least as often as the grease filter).

Do not use abrasive cleaning products. Do not use alcohol!

If the instructions regarding cleaning of the appliance or replacing the filters are not followed, this can cause a fire. These instructions must be followed! The manufacturer is not liable for damage to the hood or fire damage resulting from incompetent maintenance or from non-adherence to the safety instruction above.

Cooker hood

Clean the cooker hood with soapy water and a soft cloth.

Then rinse with clean water. Do not use aggressive cleaning agents such as caustic soda. The cooker hood finish stays in good condition if it is buffed periodically following the application of wax.

NOTE!

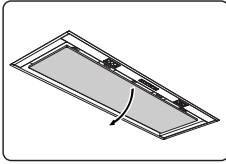
Stainless steel cooker hoods

Do not use scouring pads or other abrasive cleaners on stainless steel cooker hoods. Finish with a non-abrasive, non-polishing agent and buff the stainless steel in the direction of the grain.

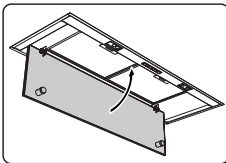
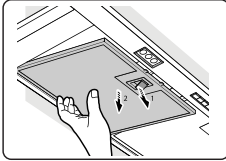
Metal grease filters

Metal grease filters should be cleaned once a month (or when indicated by the filter cleaning indicator – if present on the model) using a neutral cleaning agent, either by hand or in the dishwasher on a short, low-temperature program. Place the grease filters with the openings facing downwards in the dishwasher so the water can drain out of the filter. Aluminium grease filters become dull as a result of dishwasher cleaning agents. This is normal and does not effect the working.

Removing cassette filter



1. Switch off the motor and lighting.
2. Pull the edge extraction panel carefully out of the magnetic seal. Tilt the edge extraction panel downwards.
3. Open the filter's access latch. Support the filter with your hand.
4. Remove the filter from the hood.



Cleaning

The filters can be cleaned in the dishwasher. Allow the filters to drain well before replacing.

The filters can also be cleaned by hand.

Clean the filters in soapy water with washing up liquid and rinse. Allow the filters to drain well. The underside of the cooker hood can be cleaned with a mild cleaning agent and a damp cloth. Dry off with a paper towel.

Replacing cassette filter

The filter should be placed with the locking mechanism on the front. Open the filter access latch. The notches at the front of the filter will then slot in. Hold the access latch in this position when placing the filters.

1. Slot the notches at the back of the filter in the specially designed opening of the cooker hood.
2. Tilt the filter upwards.
3. Release the filter access hatch. The notches at the back of the filter will extend outwards and slot into the specially designed openings of the cooker hood.

The filter is now in position again.

4. Press the edge extraction panel firmly in the magnetic seal again (you will hear a click).

TIP!

The edge extraction panel can be removed for cleaning.

Maintenance

Active carbon filters

The regenerable active carbon filter must be washed by hand with neutral cleaning products, or in the dishwasher at a maximum temperature of 65 °C (the washing should be done without any plates, dishes, cups, etc. in the machine). Do not use washing detergent.

Remove the excess water without damaging the filter, remove the holder and let the filter dry in the oven for at least 40 minutes at a maximum temperature of 70 °C.

To keep the regenerable carbon filter efficient, this action should be repeated every 2 months or when indicated by the filter indicator. The filter must be replaced after no more than 3 years, or if it has been damaged.

NOTE!

It is important that the grease filters and the regenerable active carbon filter are thoroughly dry before repositioning.

Replacing the carbon filter

To replace the carbon filter, consult the manual for the recirculation kit.

Filter indicator

Saturation of grease and carbon filters

The filters should be replaced or cleaned when the filter indicator is lit. See 'Maintenance' chapter.

Grease filter

The filter indicator will light up after 30 operating hours.

- The grease filters should then be cleaned.
- Reset the memory by pressing and holding the '-' key until the filter indicator goes off.

Carbon filter

The filter indicator will flash after 120 operating hours.

- The carbon filter should then be cleaned or replaced.
- Reset the memory by pressing and holding the '-' key until the filter indicator stops flashing.

Lighting

WARNING!

The hood is fitted with LED lights. These must be replaced by an authorized technician. Do not attempt to replace the LED lights yourself.

Battery of the remote

TIP!

When the batteries are replaced the pairing connection will remain.

Replace the batteries in time, as the receiving distance will be shortened if the voltage of the battery is too low.

Don't forget to remove the batteries if you don't use the remote for a long time.

Don't leave the remote lying upside down on a conductive surface.

The warranty does not cover the batteries.

The battery may drain more quickly in connection with the lit icons.

Battery specifications: Two AAA batteries.

Technical data

EU Product Sheet

Data determined according to:

Standard EN61591 and Commission Regulations (EU) no. 65/2014 and (EU) no. 66/2014.

	CBB761S	CBB861S
Trademark	ASKO	ASKO
Type of model	BU70BA-ADC01	BU90BA-ADC01
Annual Energy Consumption (AEC_{hood}) [kWh/a]	36.1	36.8
Energy efficiency class	A+	A+
Fluid Dynamic Efficiency (FDE_{hood}) [%]	35.1	35.5
Fluid Dynamic Efficiency class	A	A
Lighting Efficiency (LE_{hood}) [lux/W]	186.4	186.4
Lighting Efficiency class	A	A
Grease Filtering Efficiency (GFE_{hood}) [%]	94.2	91.6
Grease Filtering Efficiency class	B	B
Air flow at minimum and maximum speed in normal use [m^3/h]	258 / 415	242 / 387
Air flow at intensive or boost setting [m^3/h]	723	716
Airborne acoustical A-weighted sound power emissions at minimum and maximum speed in normal use [dB(A)]	42 / 52	43 / 53
Airborne acoustical A-weighted sound power emissions at intensive or boost setting [dB(A)]	65	65
Power consumption off mode (P_o)	-	-
Power consumption in standby mode (P_s) [W]	0.38	0.38

EU Product Fiche

	CBB761S	CBB861S
Time increase factor (f)	0.7	0.7
Energy Efficiency Index (EEI_{hood})	40	40
Measured air flow rate at best efficiency point (Q_{BEP}) [m^3/h]	350	353
Measured air pressure at best efficiency point (P_{BEP})	481	493
Measured electric power input at best efficiency point (W_{BEP})	133	136
Nominal power of the lighting system (W_L)	2.8	2.8
Average illumination of the lighting system on the cooking surface (E_{middle}) [lux]	522	522

Environmental aspects

Tips for energy-efficient cooking with hoods

- Use a low extractor setting and use the highest setting (boost) if necessary.
- A well-ventilated kitchen makes the range hood more efficient.
- Clean filters regularly and replace filters when needed to keep the filter efficiency high, as a saturated filter cannot perform and leads to longer usage times.

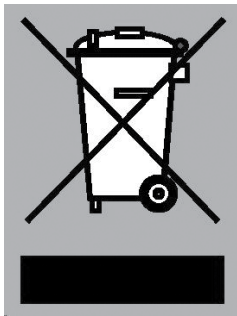
Disposal of the appliance and packaging

Sustainable materials have been used during manufacture of this appliance. This appliance must be disposed of responsibly at the end of its service life. Ask your local authorities for more information about how to do this.

The appliance packaging is recyclable. The following may have been used:

- cardboard;
- polyethylene film (PE);
- CFC-free polystyrene (PS rigid foam).

Dispose of these materials in a responsible manner and in accordance with government regulations.



The product has been marked with a crossed-out dustbin symbol to remind you of the obligation to dispose of electrical household appliances separately. This means that the appliance may not be included with normal domestic refuse at the end of its service life. The appliance must be taken to a special municipal centre for separated waste collection or to a dealer providing this service.

Separate collection of household appliances helps to prevent any potential negative impact on the environment and on human health caused by improper disposal. It ensures that the materials of which the appliance is composed can be recovered to obtain significant savings in energy and raw materials.



Declaration of conformity

We hereby declare that our products satisfy the applicable European directives, orders and regulations, as well as the requirements stated in the referenced standards.



www.asko.com



843799-a1



We reserve the right to make changes.