

AU

# Operating Instructions

## Dishwasher

### GS65260AU

**gorenje**

PROGRAMS

EXTRA

TIME



auto  
45-65°



eco  
55°



35°



1

2

3

4

5

6

7

8

9

10

11

12

- 1 Main power switch
- 2 Auto wash
- 3 Intensive wash
- 4 Eco wash
- 5 Quick wash
- 6 Rinse

- 7 SpeedWash
- 8 Auto open
- 9 Hygiene
- 10 Delayed start
- 11 Display
- 12 Rinse aid indicator

Safety instructions .....	2
Before washing for the first time .....	3
Loading the dishwasher .....	3
Using the dishwasher .....	5
Settings .....	8
Care and cleaning .....	10
Troubleshooting .....	12
Installation .....	15
Service .....	18
Information for test institute .....	18
Technical information .....	20

## Safety instructions

### General

- Read the operating instructions and keep them in a safe place!
- Never use the dishwasher for any purpose other than that specified in these operating instructions.
- Do not load the dishwasher door or dishwasher baskets with anything other than dishes.
- Never leave the dishwasher door open as someone may trip on it.
- Use only dishwasher detergent!
- This appliance is not intended for use by persons (including children) with reduced physical, sensory or mental capabilities, or lack of experience and knowledge, unless they have been given supervision or instruction concerning use of the appliance by a person responsible for their safety.
- If the supply cord is damaged, it must be replaced by a special cord or assembly available from the manufacturer or its service agent.
- Damaged mains cables must only be replaced by a qualified electrician.
- Only use the dishwasher in domestic household environments for dishwashing household dishes. All other use is prohibited.
- Never place dishes with solvent residues in the dishwasher due to the risk of explosion. Nor may dishes that contain ash, wax or lubricants be washed in the dishwasher.

### WARNING!

Knives and other pointed items must be placed with the points down in the cutlery basket or horizontally in other baskets.

### Installation

See the chapter Installation.

### Child safety

- Always start the dishwasher immediately after adding detergent.
- Keep children away from the dishwasher when the door is open. Some detergent may remain inside!
- Do not allow children to use or play with the dishwasher. Be especially vigilant when the door is open.

### WARNING!

Dishwasher detergents are strongly alkaline. They can be extremely dangerous if swallowed. Avoid contact with skin and eyes and keep children away from the dishwasher when the door is open. Seek medical attention if swallowed.

Check that the detergent compartment is empty after completion of the wash cycle.

### Winter storage/transport

- Store the dishwasher where the temperature remains above freezing.
- Avoid long transport distances in very cold weather.
- Transport the dishwasher upright or laying on its back.

### Overflow guard function

The overflow protection starts pumping out the machine and turns off the water supply if the water level in the dishwasher exceeds the normal level. If the overflow protection is triggered, turn off the water supply and call the service department.

### Packing material

Sort waste materials in accordance with local guidelines.

### Disposal

- When the dishwasher has reached the end of its service life and is to be disposed of, it should immediately be made unusable. Pull out the power cable and cut it as short as possible.
- The dishwasher is manufactured and labelled for recycling.
- Contact your local authority for information about where and how your dishwasher should be correctly recycled.

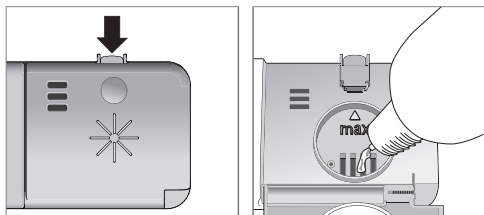
### Checking water hardness

Contact the local water utility to check the water hardness in your area. This is important with regard to how much detergent and rinse aid to use.

### Top up with rinse aid

By using rinse aid you will improve your drying result. You will also achieve a better dishwashing result with glassware and dishes.

- 1 Open the rinse aid compartment lid.
- 2 Carefully top up with rinse aid. Only add rinse aid to the level marked **max**.
- 3 Wipe up any splashes of rinse aid around the compartment.
- 4 Close the lid firmly.



### Refill rinse aid indicator

When the rinse aid needs topping up, the above symbol lights on the display.

After topping up, it may take a while before the symbol goes out.

### Setting the rinse aid dosage

The chapter Settings describes how to set the rinse aid dosage. Rinse aid dispensing can be set from 0 (Off) to 5 (High dose). (Factory settings: 5)

#### Decrease the rinse aid dosage:

- If the dishes have a sticky white/blue film.
- If the dishes are streaked.
- Build-up of foam. If you have very soft water, the rinse aid can be diluted 50:50 with water.

For water with a hardness greater than 10–12 °dH, you ought to use rinse aid with citric acid (known as acid rinse aid).

### Economic dishwashing

- Do not start the dishwasher until it is fully loaded in order to save energy.
- Do not rinse dishes first under running water. Simply scrape off large food particles before loading them in the dishwasher.
- Choose an environment-friendly detergent. Read the environmental declaration on the packaging!
- If the dishes are only slightly dirty, you can select a program with a low temperature.
- Better drying results are achieved if you use the Auto open option, which automatically opens the dishwasher door once the program has ended. (If the dishwasher is built-in, the surrounding furnishings must be resistant to condensation.)

### Fragile dishes

Some cookware is not dishwasher safe. This can be for several reasons. Some materials cannot withstand strong heat, others can be damaged by dishwashing detergent.

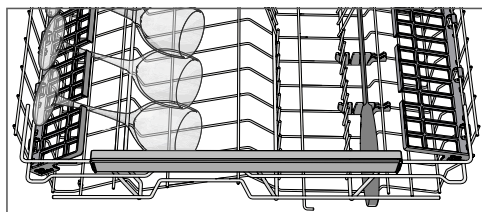
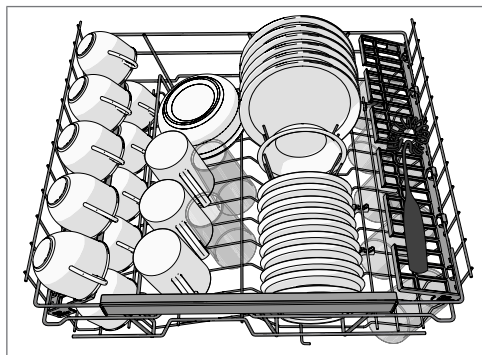
Please check your cookware is marked dishwasher safe.

### The dishwasher's baskets

The dishwasher is equipped with an upper basket and a lower basket with a cutlery basket.

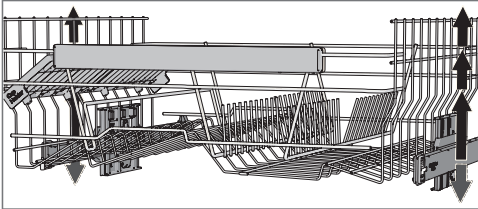
#### Upper basket

Place glasses, cups, bowls, side plates and saucers in the upper basket. All dirty surfaces should face inwards and downwards! Place wine glasses on the wine glass shelf and knives in the knife stand on the right (if fitted).



### Raising and lowering the upper basket

- 1 Pull out the upper basket.
- 2 Grab the sides of the upper basket with both hands and lift it up.
- 3 Lift the basket repeatedly with both hands in order to change its position. (The upper basket can be set in three positions.) When the upper basket is in its highest position, lifting it will return it to its lowest position. Note that both sides of the basket must always be set to the same height (position).



### Cutlery basket

Place cutlery with the handles facing down, except for knives, and spread them out as much as possible. Ensure that spoons do not stack inside each other.

Place the cutlery basket in the lower basket.

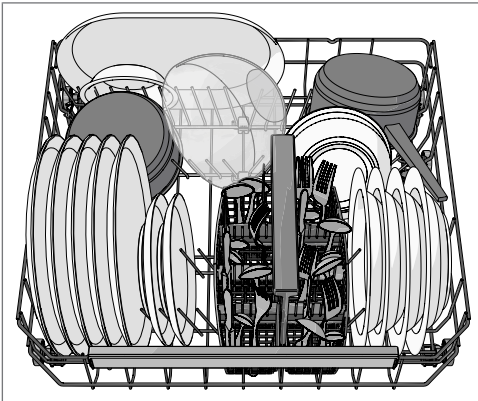
#### NOTE!

Place the dishes in the machine so that the rinse water will run off them; this is especially important for plastic.

Check that the spray arms can rotate freely.

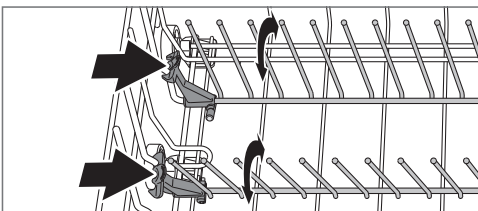
### Lower basket

Place plates, side plates, serving dishes, pots and cutlery (in the cutlery basket) in the lower basket.

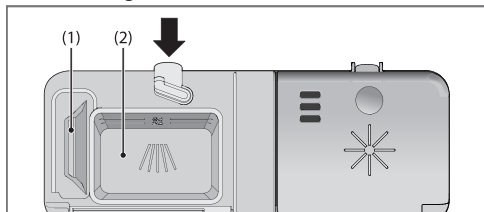


### Foldable tines

Fold down the foldable tines (plate supports) when dishwashing pots. Release the foldable tines by pressing the catch inwards before adjusting their position.



### Add detergent



- 1 Prewash detergent compartment
- 2 Main wash detergent compartment

Detergent is added according to water hardness.

Follow the instructions on the detergent packaging.

Too much detergent can result in less effective dishwashing and also entails greater environmental impact.

Add the detergent to the detergent compartment. There is a compartment for the prewash and one for the main wash. If powder and liquid dishwasher detergents are used, add a small amount of the detergent to the prewash compartment. Contact the detergent manufacturer if you have any questions about the detergent.

#### NOTE!

Use only dishwasher detergent! Washing up liquid must not be used as the foam that forms prevents the dishwasher from operating effectively.

#### Dishwasher tablets

Halve the tablet if it is difficult to close the dispenser lid. There is a risk that the detergent will not be released properly if the lid is tight and will not open correctly.

#### NOTE!

Dishwasher tablets are not recommended for short programs (less than 75 minutes). Use powder or liquid dishwasher detergent instead.

#### 3-in-1/All-in-one detergent

Read through the directions for these products carefully. If anything is unclear, contact the detergent manufacturer.

If the detergent tablets you use contain rinse aid, the dishwasher's rinse aid dosing can be deactivated. See the chapter Settings.

### The main power switch

Press and hold the main power switch until the display lights up.

- 1) *This combination (Auto wash + SpeedWash + Auto open) is also known as Rapid Intensive (90 minutes).*

### PROGRAMS - Choose program

Press the desired program until the program symbol is lit up.

auto

#### 45-65° Auto wash

The dishwasher can measure how dirty the dishes are and adjust water consumption and temperature accordingly. When newly installed, the program needs to be run five times before it is fully adapted and can provide the best results.

auto

#### 45-65° Auto wash<sup>1)</sup> + SpeedWash + Auto open

An effective program for slightly dried leftovers. (This program is not intended for burnt food, such as on oven dishes.)



#### 70° Intensive wash

Program for very dirty dishes, such as pans, casserole dishes and oven dishes. If these dishes do not completely fill the dishwasher, you can add plates and the like.

eco

#### 55° Eco wash

Use when you want to save water and energy. For normally soiled load, such as plates, serving dishes, cups, glasses and so on.



#### 35° Quick wash

This program is used for glasses and porcelain that is slightly dirty, such as coffee cups.

*In combination with SpeedWash, a shorter program is achieved (15 minutes).*



#### \*° Rinse

Used to rinse dishes while you wait for the dishwasher to become fully loaded.

### EXTRA - Selecting Options

To select an option, press one of the option buttons until the option is showing as activated. The available options vary between programs and some options cannot be combined (available options glow dimly).



#### SpeedWash

This option shortens the program time, but uses more energy and water.

## Auto open

The dishwasher door opens automatically at the end of the program, which improves the drying results. (If the dishwasher is built-in, the surrounding fixtures must be resistant to any condensation.)

### NOTE!

The dishwasher door must not be blocked when set to open automatically. This can cause a malfunction of the door lock.

## Hygiene

This option is intended for situations where demands on hygiene are especially high, such as when dishwashing baby bottles and chopping boards. The temperature is higher in both the main wash and the final rinse.

## Delayed start

When you select Delayed start the dishwasher will start 1-24 hours after you close the door.

- 1 Press the button once to activate Delayed start. Press the button several times – or hold it in – to set the desired number of hours.
- 2 Close the door and the dishwasher counts down 1 hour at a time and starts after the selected delay.

If you want to cancel the Delayed start option, open the door and press and hold the main power switch until the display turns off.

## Start the dishwasher

Close the door to start the dishwasher. If the main power switch is on, the dishwasher will start automatically when the door is closed.

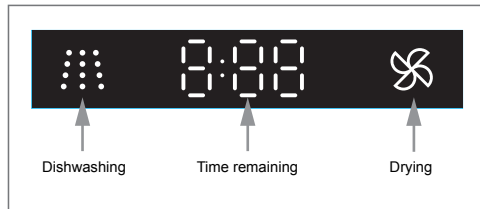
## TIME - Time remaining

Once you have chosen a program and options, the time the program took when last used is displayed.

Once you have started the dishwasher, the display shows the remaining program time. The remaining time is updated after the water for the final rinse has been heated.

This may differ somewhat from time to time depending on the temperature of the water supply, the amount of dishes, the ambient temperature and other factors.

## Front display



## Stopping or changing a program

If you want to change program after starting the dishwasher, open the door, then press and hold the main power switch until the display turns off. Add more detergent if the lid of the detergent dispenser has opened. Then press the main power switch, choose a new program, and close the door.

## Do you want to add more dishes?

Open the door. The dishwasher stops automatically. Add the dishes and close the door. After a while, the dishwasher continues the program.

## How to get the best drying results

- Fully load the dishwasher.
- Place the dishes in the machine so that the rinse water will run off them; this is especially important for plastic.
- Top up with rinse aid or increase the rinse aid dosage level.
- Activate the Auto open option.
- Allow the dishes to cool before unloading the dishwasher.

## Once the program has finished

Once the program has finished, “End” appears on the display.

At the end of the program, you will hear a short beep. Chapter Settings describes how to change this function.

The dishwasher switches off automatically after the program ends. Turn off the water tap after each use.

## Drying

For additional drying the door should be opened 35 mm upon completion of the drying cycle. For more information, see page 20 in the chapter Technical information.

## If the dishwasher is switched off using the main power switch or during a power outage

If the dishwashing program was not finished, the interrupted program continues when power is restored.

### NOTE!

During drying, the program is interrupted if the power is cut or the door is open for more than 2 minutes.

## Program chart

PROGRAMS - Program	Detergent, compartment 1 / 2 (ml)	EXTRA - Options	Prewashes	Main wash	Number of rinses	Final rinse	Consumption values <sup>1)</sup>		
							Dishwashing time (approx. hrs:min)	Energy (approx. kWh)	Water cons. (L)
Auto wash	--- / 25	Auto open	1-3	50-65 °C	2-3	65 °C	2:10-2:50	0.9-1.5	11-20
Intensive wash	10 / 25		2	70 °C	2	70 °C	2:55	1.7	17
Eco wash <sup>2)</sup>	--- / 25	Auto open	1	55 °C	2	53 °C	2:30	0.74	12.7
Quick wash	--- / 10			35 °C	1	25 °C	0:20	0.2	10
Rinse	--- / ---				1	--- °C	0:07	0.01	3

1) Consumption values vary depending on the temperature of the incoming water, room temperature, load size, selected additional functions and more.

2) The energy label performance figures are based on this program which is recommended for normally soiled load (Auto open).

## Settings

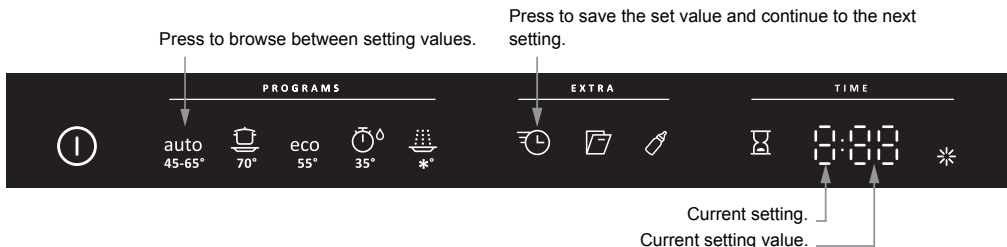
### Open the Settings menu:



1. First, open the door. Turn off the machine. Press and hold the main power switch until the display lights up.
2. Within 10 seconds:  
- press the program button for Auto wash and the option button for SpeedWash.
3. The display shows the Settings menu (current setting and its currently set value).  
(Exit the menu by browsing through the menu or pressing the main power switch.)

auto  
45-65° +

### Navigate the Settings menu:



### You can now adjust the following settings:

Settings	Options	
1. Rinse aid	1:00 - 1:05	Rinse aid dosage setting. Increase the rinse aid dosage: <ul style="list-style-type: none"> <li>• If the dishes have water marks.</li> </ul> Decrease the rinse aid dosage: <ul style="list-style-type: none"> <li>• If the dishes have a sticky white/blue film.</li> <li>• If the dishes are streaked.</li> <li>• Build-up of foam. If you have very soft water, the rinse aid can be diluted 50:50 with water.</li> </ul>
4. Buzzer volume	4:00 - 4:03	The dishwasher uses a buzzer to indicate when a program is finished or when a fault has occurred.
5. Self Cleaning Program	5:00 (Off) 5:01 (On)	Self-cleaning program for antibacterial cleaning of the dishwasher tub, spray arms and spray pipes. This program can be run (with no dishes in the machine) using normal dishwasher detergent, citric acid or one of the dishwasher cleaners available on the market. For the removal of limescale deposits, see also the section Limescale deposits in the chapter Care and cleaning. Start the program by activating the setting and then closing the door.

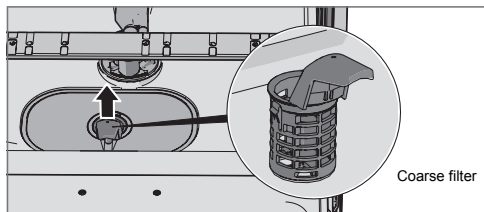


Settings	Options	
<b>6. ION</b>	6:00 (Off) 6:01 (On)	<p>This setting prevents bad odours from dirty dishes left in the dishwasher. Activate the setting before starting a dishwashing program. The fan and ioniser are activated at intervals for 72 hours. The text ION is shown on the display when this function is active.</p> <p>Do not use this setting in confined spaces with inadequate ventilation.</p> <div data-bbox="613 347 1057 501" style="border: 1px solid black; padding: 5px;"> <p><b>TIP!</b></p> <p>If you want to deactivate the ION setting to start a program, open the door, then press and hold the main power switch until the display turns off. Restart the dishwasher.</p> </div>

## Care and cleaning

### Coarse filter

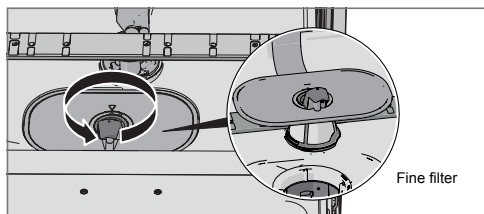
The coarse filter traps larger food particles, which cannot get past the drainage pump. Empty the coarse filter as necessary.



- 1 Lift the coarse filter by the handle.
- 2 Empty the coarse filter. Remember to replace it!

### Fine filter

Debris that collects on the fine filter is automatically rinsed away during each wash. However, the fine filter and its pipe section should be cleaned a couple of times a year.



- 1 Turn the handle anticlockwise.
- 2 Lift the filter straight up using the handle. Free the coarse filter to clean the fine filter.
- 3 Replace in reverse order. Check that the edges seal properly when replacing the fine filter.
- 4 Lock the filter in place by turning the handle clockwise to the stop position. The handle should point straight out from the dishwasher.

#### NOTE!

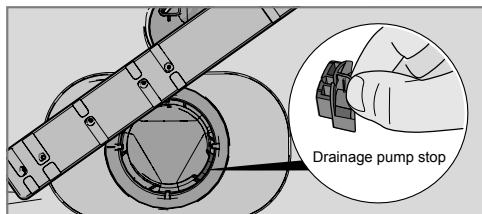
The dishwasher must not be used without the filter in place!

Diswashing efficiency can be affected if the coarse filter is incorrectly fitted. After cleaning ensure that filter handle is fully locked with the handle pointing out of the dishwasher.

- 3 In order to inspect the drainage pump, remove the coloured stop on the right in the bottom drain.
- 4 By inserting your finger into the hole you can turn the pump blade to release anything blocking it.
- 5 Replace the drainage pump stop along with the fine and coarse filters.
- 6 Plug the machine in again.

If the dishwasher still does not start and a whirring sound is heard, the overflow protection has been activated.

- Shut off the water.
- Remove the plug from the wall socket.
- Call the service department.



#### NOTE!

Do not forget to replace the drainage pump stop.

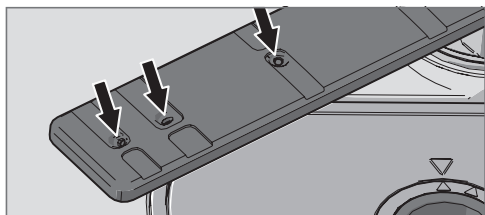
### Drainage pump

The pump can be accessed from inside the dishwasher.

- 1 Switch the power off from the mains and remove the plug from the electrical point.
- 2 Remove the coarse filter and the fine filter.

## Spray arms

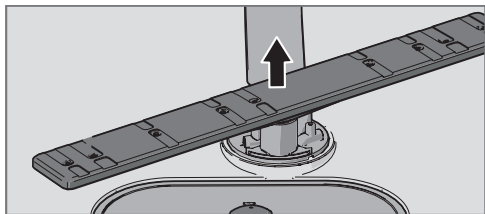
Holes and bearings can sometimes become blocked. Remove any debris using a pin or something similar. The spray arms also have holes on their undersides.



To facilitate cleaning, you can remove the spray arms. Remember to fit them firmly back into place after cleaning.

### Lower spray arm

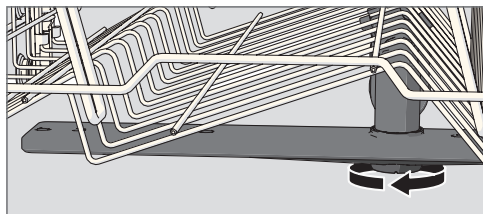
- Pull the lower spray arm straight up to release it.



### Upper spray arm

- 1 Pull out the upper basket.

- 2 Unscrew the spray arm bearings counterclockwise to remove the spray arm from the upper basket.



## Door

When cleaning the edge around the door, use only a slightly damp cloth (with a little cleaner if necessary).

## Limescale deposits

The dishwasher tub is made of stainless steel and is kept clean through normal use. If the water is hard in your location, limescale deposits may build up in the dishwasher. If this happens, run a self-cleaning program with two tablespoons of citric acid in the detergent compartment (with no dishes in the machine). The chapter Settings describes how to activate the Self Cleaning Program setting.

## Front panel

Keep the buttons clean and free from grease. Wipe them clean with a dry or slightly damp cloth. Never use cleaners – they can scratch the surface. Use the main power switch to turn off the dishwasher before cleaning the buttons to avoid activating any buttons unintentionally.

## Troubleshooting

Type of fault on the display		Action
<b>F10</b>	Overfilling	Clear the drainage pump. See the chapter Care and cleaning. If the problem persists, call the service department.
<b>F11</b>	Water outlet fault	See "Water remains in the dishwasher" in the table "Problem" below. If the problem persists, call the service department.
<b>F12</b>	Water inlet fault	Check whether dishwasher inlet hose is connected to a pressure limiting valve (some pressure limiting valves may restrict the supply of water to the dishwasher).  Check that the water tap is on. Check that the outer filter on the inlet hose is not blocked. If the problem persists, call the service department.
<b>F40</b>	Inlet valve leakage	Turn off the water tap and call the service department.
<b>F52</b>	Water level fault	Check that the outer filter on the inlet hose is not blocked. Also check that the drainage hose is fitted in accordance with the installation instructions. If the problem persists, call the service department.
<b>F54</b>	Overfilling	Turn off the water tap and call the service department.
<b>F56</b>	Circulation pump fault	Call the service department.

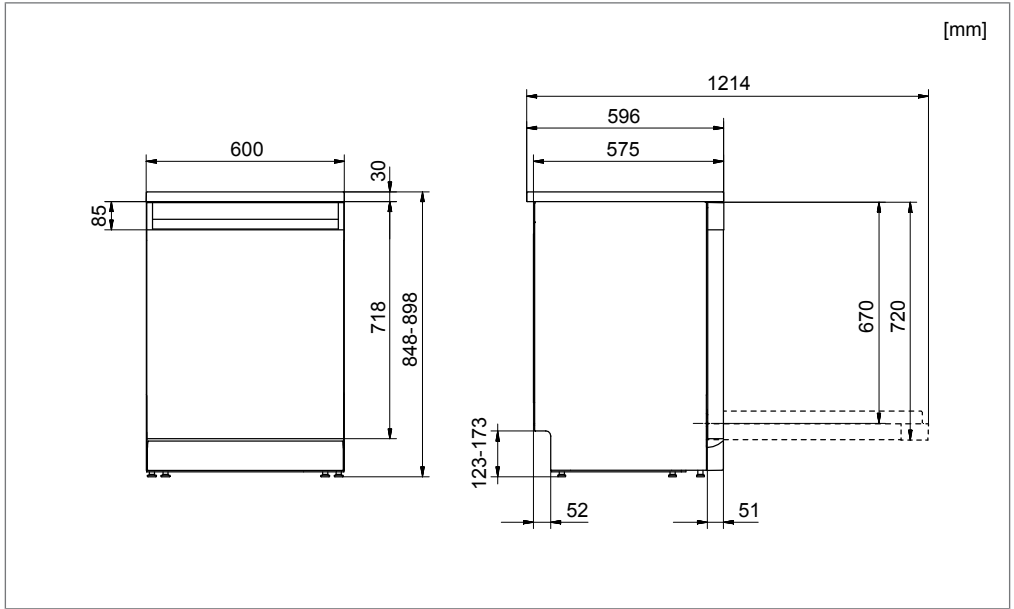
Press any button to clear the error message.

Problem	Possible causes	Action
The buttons do not react when pressed.	You have pressed the buttons too soon after opening the door.	Wait a moment then try again.
	The buttons are dirty.	Clean with a dry or slightly damp cloth.
	The door is closed.	Open the door. The buttons only react to use when the door is open.
Cannot close door.	The baskets are not correctly positioned.	Check that the baskets are correctly positioned horizontally.
		Check that the dishes are not blocking the baskets from sliding properly into place.
	The door lock does not click into place and lock.	Check the door lock. If it does not click into place and lock, open the door. Press and hold the button for the Auto open option for 15 seconds. Then wait 30 seconds. Close the door. Check that the door lock clicks into place and locks.

<b>Problem</b>	<b>Possible causes</b>	<b>Action</b>
The dishwasher does not start.	The door is not properly closed.	Check.
	You have opened the dishwasher to add more dishes while a program is in progress.	Close the door and wait. After a while, the dishwasher continues the program.
	The door lock has not clicked into place and locked.	Check the door lock. If it has not clicked into place and locked, open the door. Press and hold the button for the Auto open option for 15 seconds. Then wait 30 seconds. Close the door. Check that the door lock clicks into place and locks.
	A fuse/circuit breaker has been tripped.	Check.
	The plug is not plugged into the wall socket.	Check.
	The water tap is turned off.	Check.
	Overflow/leaks	Check.
	A whirring sound (the drainage pump) is heard from the dishwasher and does not stop when the main power switch is turned off.	Turn off the water tap. Pull out the plug and call the service department.
	Check that the Delayed start option has not been selected.	Press and hold the main power switch until the display turns off if you want to cancel the Delayed start option. Restart the dishwasher.
The dishes are not clean.	The spray arms do not rotate.	Remove the arms and clean them.
		Check that the dishes are not blocking the spray arms.
	Old detergent. Detergent is a perishable product.	Avoid large packages.
	Incorrect detergent dosage.	Dose according to water hardness. Far too much or far too little detergent results in poorer dishwashing results.
	Dishwashing program too weak.	Select a more powerful program.
	Dishes loaded incorrectly.	Do not cover porcelain with large bowls or the like. Avoid placing very tall glasses in the corners of the baskets.
	Glasses and cups have toppled over during the program.	Place dishes to sit steady.
	The filter is not correctly fitted.	Screw the filter firmly into place. See the chapter Care and cleaning.
Spots on stainless steel or silver.	Some foodstuffs, such as mustard, mayonnaise, lemon, vinegar, salt and dressings, can mark stainless steel if left for too long.	Rinse off these types of foodstuffs if not starting the dishwasher immediately. Use the Rinse program.
	All stainless steel can cause spots on silver if they come into contact during dishwashing. Aluminium can also cause spots on dishes.	Silver and stainless steel items should not come into contact during dishwashing as they may tarnish.

<b>Problem</b>	<b>Possible causes</b>	<b>Action</b>
Spots or films on the dishes.	Incorrect rinse aid dosage setting.	See the chapter Settings.
	Too high temperature and/or too much detergent can cause etching on crystal. Unfortunately, this cannot be repaired, only prevented.	Wash crystal at a low temperature and with a conservative amount of detergent. Contact the detergent manufacturer.
The dishes have a sticky white/blue film.	Rinse aid dosage setting too high.	Reduce the amount. See the sections Before washing for the first time and Settings. If you have very soft water, you may want to dilute the rinse aid 50:50 with water.
Spots left after washing.	Lipstick and tea can be difficult to wash off.	Use a detergent with a bleaching agent.
Rattling sound when dishwashing.	The dishes are not correctly placed or the spray arms are not rotating.	Check that the dishes are placed securely. Spin the spray arms to make sure they can rotate.
The sound of a fan is heard even when no dishwashing program is running.	The ION setting is activated.	See the chapter Settings.
1 minute appears in the display.	The program is taking longer than estimated.	None, next time the program is run the corrected time will be displayed.
Water remains in the dishwasher.	Blocked drainage hose.	Loosen the drainage hose where it connects to the sink unit's water trap. Check that no debris has fastened. Is the cone-shaped part of the pipe cut to an inner diameter of at least 14 mm?
	Kink in drainage hose.	Check that the hose is free from kinks and sharp bends.
	The filters are blocked.	Clean the coarse and fine filters.
	The filter is not locked in completely.	Ensure filter is completely locked with handle pointing towards the door.
	Debris in the drainage pump.	Clean the drainage pump. See the chapter Care and cleaning.
Bad odour in dishwasher.	Dirt around the seals and in corners.	Clean with washing-up brush and low foaming cleaner.
	Low temperature programs have been selected for a prolonged period.	Run a program with a higher temperature about once a month.
	Dirty dishes have been left in the dishwasher for some time.	Activate the ION setting. See the chapter Settings.
Bad odour outside the dishwasher.	The ION setting has been activated in a confined space with inadequate ventilation.	Deactivate the ION setting. See the chapter Settings.
The dishes are not dry enough.	The Auto open option is not activated.	Activate the Auto open option.
	The dishwasher is not fully loaded.	Fully load the dishwasher.
	Rinse aid needs topping up or dosage is set too low.	Top up with rinse aid or increase the rinse aid dosage. See the sections Before washing for the first time and Settings.

# Installation

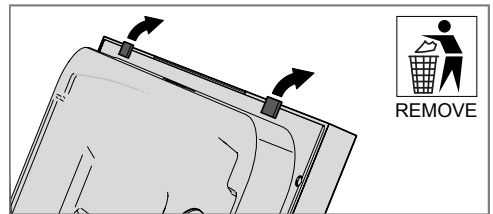


## Safety instructions

- Connections to electricity, water and drainage must be performed by a qualified professional.
- Always follow applicable regulations for water, drainage and electricity.
- Take care during installation! Wear protective gloves! There must always be two people!
- Before screwing the dishwasher into place, test the dishwasher by running the Rinse program. Check that the dishwasher fills with water and drains. Check also that none of the connections leak.

## Transport protection for the door

Do not forget to remove the transport protection for the door when unpacking the dishwasher.



### **⚠ WARNING!**

Turn off the water supply when installing the dishwasher!

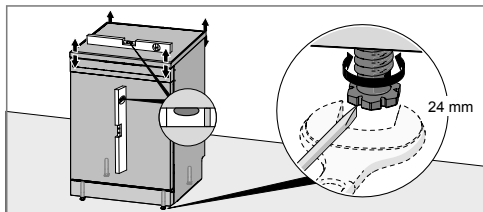
### **⚠ WARNING!**

The plug must be disconnected or power to the socket turned off while the work is carried out!

## Placing the dishwasher

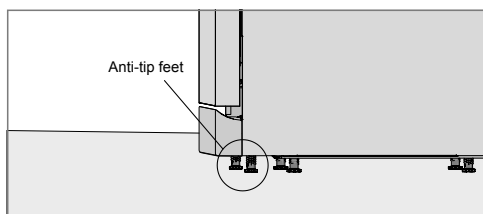
The dishwasher is intended for freestanding installation, but can also be installed under a worktop.

## Adjust the height and slide the dishwasher into place



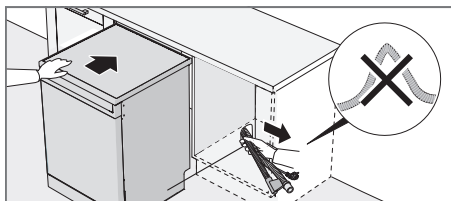
### Freestanding

- 1 Make sure the surface on which the dishwasher is to be installed is firm. Adjust the dishwasher's height using its four feet so that the dishwasher is level. The dishwasher may not lean more than 5 mm.
- 2 Once the feet are properly adjusted, adjust the anti-tip feet to sit firmly against the floor.



### Built-in

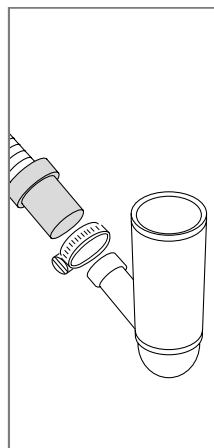
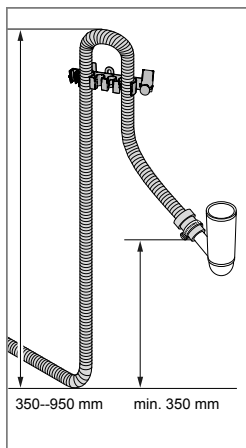
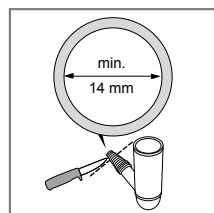
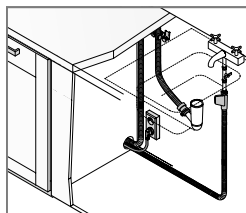
- 1 Start by measuring the height from the floor to the bottom edge of the worktop.
- 2 Measure the height from the floor to the top edge of the dishwasher.
- 3 Adjust the dishwasher's feet by turning them clockwise to raise or anticlockwise to lower the machine.
- 4 Check that there is an air gap of at least 3 mm between the underside of the worktop and the top edge of the dishwasher.
- 5 Slide the dishwasher into place.
  - Pull through the drainage and supply hoses when the machine is slid into place.
  - Check that the hoses have no kinks or sharp bends, and check that there is nothing that can damage the hoses.



- 6 Make any final adjustments to the front feet (the dishwasher may not lean more than 5 mm).
- 7 Once the feet are properly adjusted, adjust the anti-tip feet to sit firmly against the floor.

*The dishwasher can also be installed in a recess without its worktop. See Remove dishwasher worktop.*

## Drainage connection



The drainage hose may be extended by a maximum of 3 m (the total length of the drainage hose must not exceed 4.5 m). Any joints and connecting pipes must have an internal diameter of at least 14 mm. However, the drainage hose should ideally be replaced with a new hose without joints.

No part of the drainage hose may be more than 950 mm above the bottom of the dishwasher. The hose must not be routed directly to a floor drain or the like. In such cases, the hose can act as a siphon and empty the dishwasher.

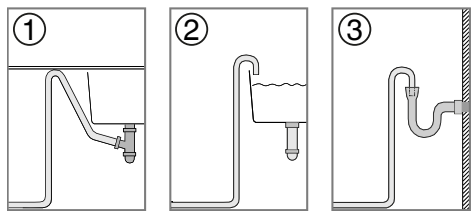


The hose must always discharge at least 350 mm above the bottom of the machine.

Ensure that the drainage hose has no kinks.

#### NOTE!

When the drainage hose is routed to a connection nipple on the sink unit's water trap (see Illustration 1), please note that the hose must be attached at the same height as the underside of the sink unit. Otherwise dishwasher from the sink may flow back into the dishwasher. For other connection alternatives, see Illustrations 2 and 3.



## Connection to water supply

Use only the supply hose provided with the dishwasher. Do not re-use old hoses or other spare supply hoses.

The supply pipe must be fitted with a stopcock. The stopcock must be easily accessible, so that the water can be shut off if the dishwasher has to be moved.

Once the installation is complete, the stopcock should be opened to allow the pressure to settle for a while and to check that all connections are tight.

### Connect to cold water...

If you use oil or electricity to heat your home.

### Connect to hot water (max. 70 °C)...

If you use district heating, solar power or geothermal power to heat your home. Choosing a hot water connection cuts program times and reduces the dishwasher's electricity consumption.

#### NOTE!

Connecting a dishwasher to the water supply via certain types of pressure limiting valves may restrict the water supply!

This may cause **F12** error code/ Water inlet fault to be displayed.

## Electrical connection

Information about the electrical connection can be found on the compliance plate. This specification must match the electricity supply.

The dishwasher must be connected to an earthed wall socket.

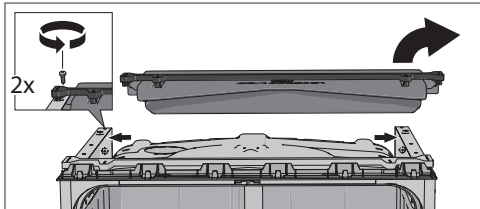
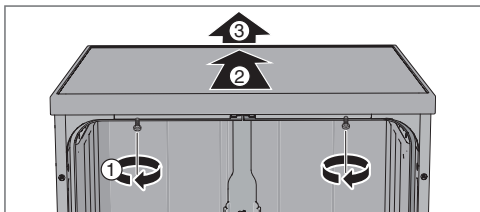
The electric wall socket must be placed outside of the installation area to be easily accessible after installing the dishwasher. Do not use an extension cord!

#### NOTE!

Repairs and maintenance must be carried out by a qualified professional.

## Remove dishwasher worktop

The dishwasher can be installed in a recess without its worktop. If the dishwasher's worktop is removed, the dishwasher must be installed so that it is enclosed on both sides and is under a separate worktop. If the dishwasher is installed so that one of its sides is visible, a brace must be fitted to the rear edge of the dishwasher. Accessories can be purchased where you purchased your dishwasher.

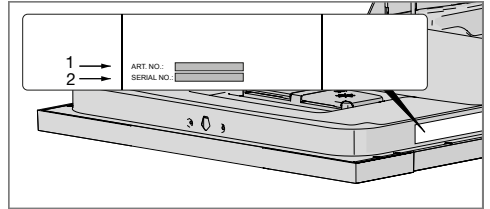
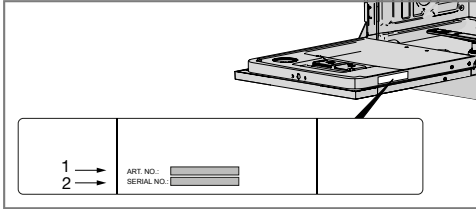


For recess installation, see the section Placing the dishwasher.

Read the chapter Troubleshooting before contacting the service department. Provide the details on the compliance plate in all contact. Include the item number (1) and the serial number (2).

Request test institute information via e-mail [dishwashers@appliance-development.com](mailto:dishwashers@appliance-development.com).

The request should include the details on the product's serial number plate. Include the article number (1) and the serial number (2).



## Your notes

---

---

---

---

---

---

---

---

---

---

---

---

---

---

---

---

---

---

---

---

---

---

---

---

---

---

---

### Information on energy labelling

#### Energy labelling

Australian standard:	AS/NZS 2007
Number of place settings:	14
Dishwashing programs:	Eco wash <sup>1)</sup> , option Auto open
Program time:	2:30 hours:minutes
Connection:	Cold water 20 °C
Test method for noise measurement:	IEC 60704-2-3

1) *This dishwashing program is the standard cleaning cycle used to compile the energy labelling information. It is intended for washing normally dirty dishes and is the most effective program in terms of combined energy and water consumption.*

#### Technical data

Height:	848-898 mm
Width:	600 mm
Depth:	596 mm
Capacity:	14 Place settings <sup>1)</sup>
Water pressure:	0.03–1.0 MPa
Electrical connection:	See compliance plate
Rated power:	See compliance plate

1) *In accordance with standard, AS/NZS 2007.*