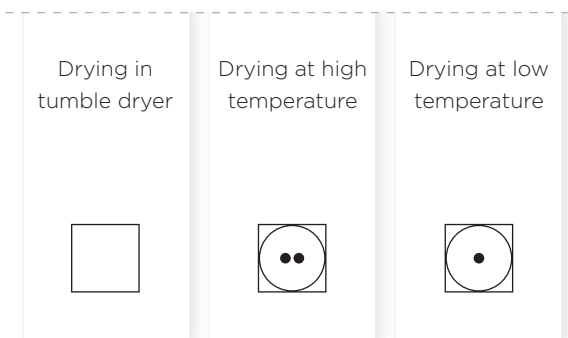


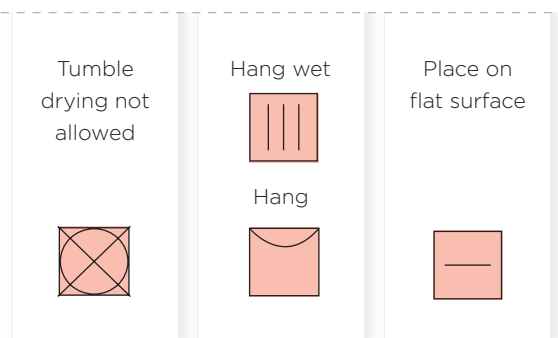
STEP 1

CHECK THE TAGS ON YOUR LAUNDRY

DRYING IN TUMBLE DRYER IS ALLOWED



DRYING IN TUMBLE DRYER IS NOT ALLOWED

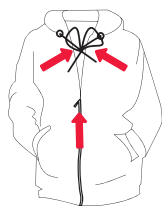


STEP 2

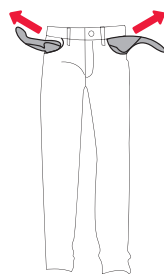
PREPARING THE LAUNDRY AND LOADING THE DRYER



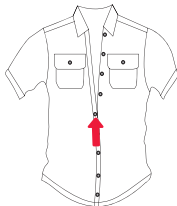
Sort the laundry by type and fabric thickness (see program table below)



1 Close the zips and tie any ribbons.



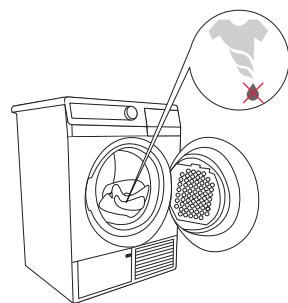
2 Turn the pockets inside out.



3 Close the buttons.



4 Place sensitive clothes in a laundry washing bag.



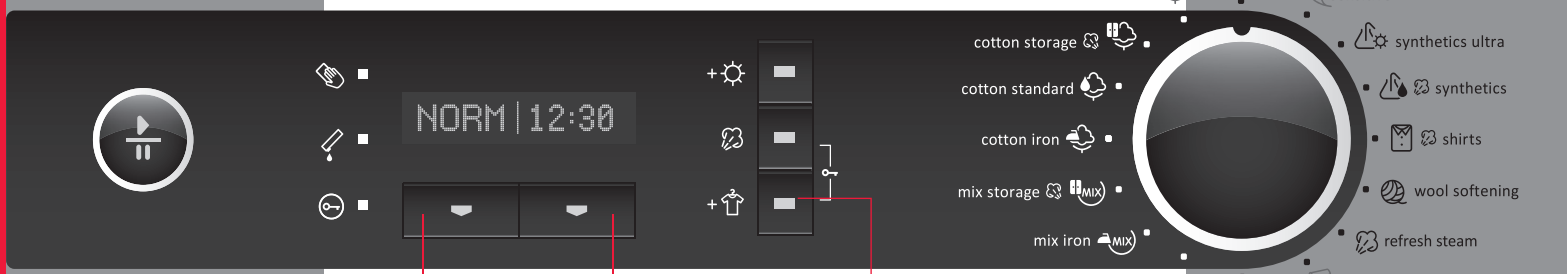
5 Insert wrung or spun laundry into the drum. Recommended spinning rate is at least min. 800 rpm.

STEP 3

PROGRAM SELECTION TABLE

Program	Laundry	Program	Laundry
Cotton Ultra Storage Standard Iron	Non-delicate cotton laundry • towels, terry towels, stockinette, T-shirts, trousers, kitchen cloths etc.	Refresh steam	Clothing that you wish to treat with steam • seasonal clothing, preparing the laundry for easier ironing
Mix Storage Iron	Clothing made of a mixture of fibres • trousers, T-shirts, suits etc.	Wool softening	Wool garments • garments with mixed fibres containing wool, which you wish to soften • sweaters, scarves, shawls etc.
Timed program 30' / 90'	• laundry that needs to be thoroughly dried • a small amount of laundry, or individual garments	Shirts	Shirts & blouses
Bed linen	Larger pieces of laundry • bedding, large tablecloths, towels etc. • prevents the laundry from forming into a bulk.	Synthetics Standard Ultra	Synthetic garments • T-shirts, trousers, suits, socks and stockings, gowns etc.
		Delicate (Sensitive)	Laundry that requires drying at lower temperatures • blouses, delicate underwear, shirts with additional decor etc.

STEP 4



5 PRESS TO START / PAUSE

START ▶ light is lit
PAUSE || light flashes

SIGNAL LIGHTS ARE ON:

- when it is necessary to clean the filter;
- when it is necessary to empty the condensate tank;
- when the child lock is on.

4 SELECT MODE (STYLE)

NORM care (default setting)

GEN care for sensitive drying at lower temperature.

3 SELECT START DELAY

Select start delay by pressing the button several times (30 min - 24 h).

Countdown will be indicated on the display unit above the key.

2 SET ADDITIONAL FUNCTIONS

+ EXTRA DRY
Press key up to three times to increase the level of laundry dryness and drying time.

STEAM
Smooths wrinkles and freshens laundry.

+ ANTICREASE EXTRA
Prevents creasing if laundry is not taken from the dryer immediately after drying (default is 2 h, possible to set from 0-4 h)

1 SELECT THE PROGRAM OR TURN ON/OFF THE DRYER

Turn the knob left or right to select the program.

Turn the knob to the »OFF« position to turn the dryer off.

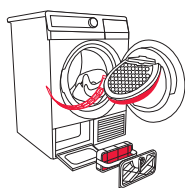
+ CHILD LOCK
Simultaneously press the two keys and hold for 3 sec.

STEP 5

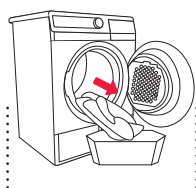
END OF DRYING CYCLE



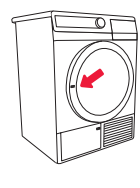
An acoustic signal will indicate the end of the drying cycle. Signal lights will light up and the light on the START/PAUSE key will flash.



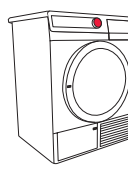
1 Open the dryer door and clean the filters (see section Cleaning at the back page).



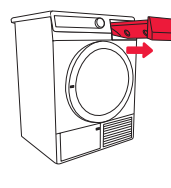
2 Take the laundry from the drum.



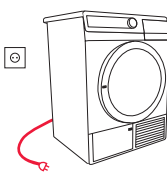
3 Close the dryer door.



4 Rotate the program selector dial to the "OFF" position.




5 Empty the condensate tank.

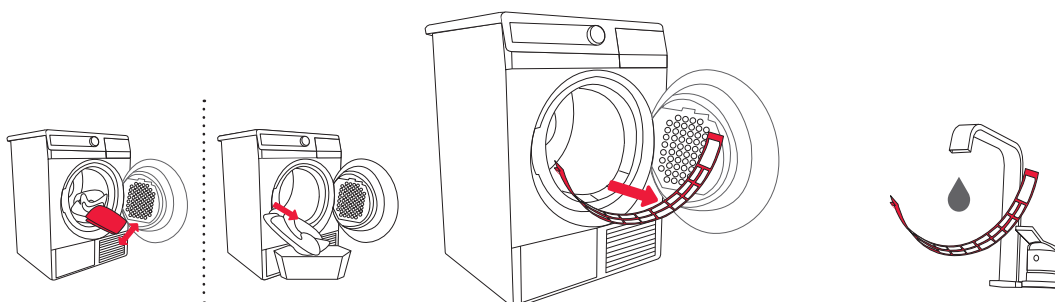


6 Unplug the power cord from the outlet.

CLEANING THE FILTER ON THE LOWER SIDE OF THE DOOR OPENING

 **Clean the filter after each drying cycle.**

If the filter is not cleaned regularly, airflow will be reduced which in turn prolongs the drying time.




1 Before emptying the drum, **clean the filter** on the lower side of the door opening **using your hand or a damp cloth.**

2 If the filter is clogged and requires washing, remove it from the support bed.

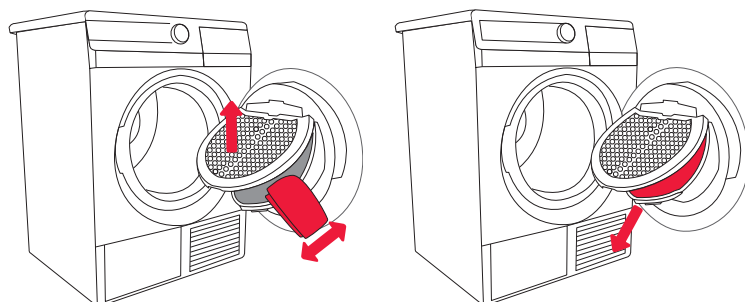
3 **Rinse it under running water, and dry it.**

Make sure the filter snaps back into place.

CLEANING THE NET FILTER

 **Clean the filters after each drying.**

Be careful not to harm yourself during opening/closing of the net filter cover.



1 Lift the filter cover. **Gently scrape the filter** to remove the lining of fibres and threads.


2 Remove the **net filter** from the support bed.

3 **Rinse the filter under running water** and wipe it dry.

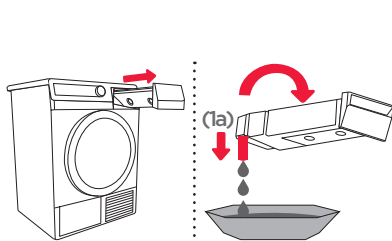
Reinstall the filter net so that it loudly clicks in place.

EMPTYING THE CONDENSATE TANK

CLEANING THE STEAM GENERATOR TANK FILTER

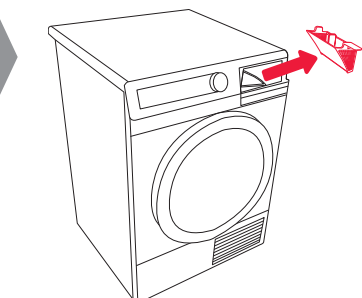
 **Empty the condensate tank after each drying cycle.**

Make sure the remains of the fibres do not enter the dryer as this may clog the system.



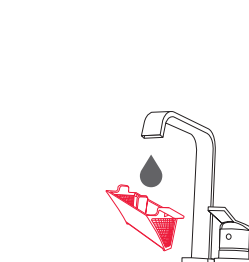
1 **Remove the condensate tank** and turn it upside down above the sink or vessel to empty.

1a Pull out the spout at the opening for easier emptying (only some models).



2 Each time you empty the condensate tank, **clean the steam generator tank filter.**

Remove the **filter** from the support bed in the condensate tank housing.




3 **Clean the filter thoroughly under running water**, if necessary.

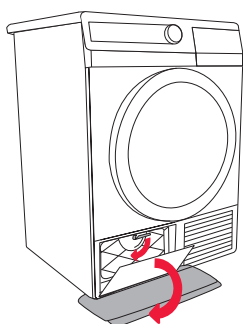
Also clean the filter support bed. Put the filter and the condensate tank back into place.

en (07-12)
414929

CLEANING THE HEAT PUMP FILTER

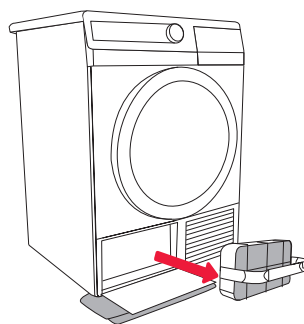
 **Clean the foam filter at least after every five drying cycles.**

Push the exterior cover upwards towards the appliance until it snaps back into place.

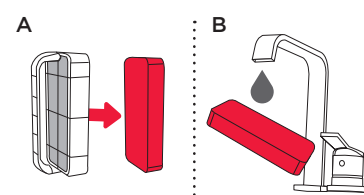


1 Place an absorbent cloth on the floor in front of the dryer.

Open the outer cover, then hold the handle on the left side and pull downwards.



2 Use the handle to **remove the heat pump foam filter** from the dryer.



3 Remove the filter from its handle and use a damp cloth to clean the housing.

Wash the filter under running water. Dry the filter and put it back.

TIPS

FOR ECONOMICAL USE OF YOUR DRYER

FOR SMOOTH AND SOFT LAUNDRY

TIPS FOR ECONOMICAL USE

- Dry the recommended amount of laundry in each batch (see step 3 - Program Table).
- It is not recommended to dry laundry made of particularly delicate fabrics that may be deformed.
- Drying time will be shorter and power consumption will be lower if the garments are thoroughly wrung or spun before drying.
- Regular cleaning of the filters will lead to optimum drying time and minimum power consumption.
- Use of conditioner in the washing cycle is not necessary when the clothes are dried in a dryer.

TIPS FOR SMOOTH AND SOFT LAUNDRY

- Select the appropriate drying program to avoid over-drying your laundry and problems with ironing or shrinkage of fabric.
- Remove laundry right after the end of the drying cycle to prevent it from creasing again.
- Use steam generator to straighten the creases and refresh the laundry.
- Ionizer system adds negative ions into dryers drum - the fibre will be flexible and your clothes will be tender and easy to iron.
- Dry smaller amount of laundry or single items with the timed program. When drying smaller amounts of laundry, the sensor may not perceive the actual level of moisture.

