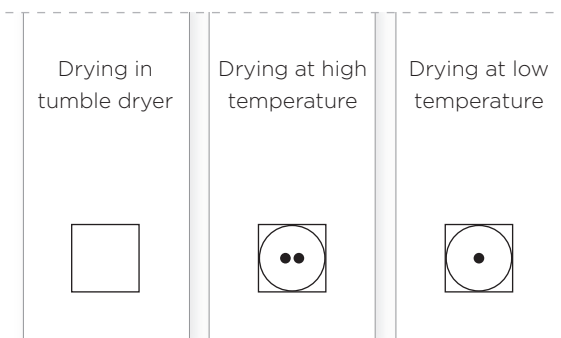


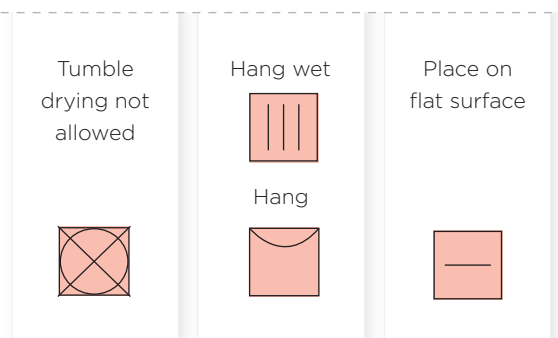
STEP 1

CHECK THE TAGS ON YOUR LAUNDRY

DRYING IN TUMBLE DRYER IS ALLOWED



DRYING IN TUMBLE DRYER IS NOT ALLOWED

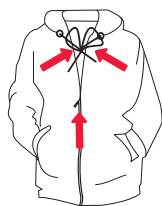


STEP 2

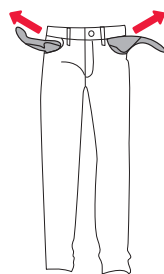
PREPARING THE LAUNDRY AND LOADING THE DRYER



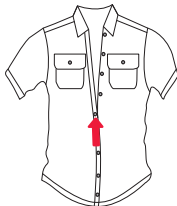
Sort the laundry by type and fabric thickness (see program table below)



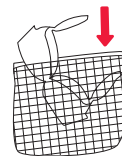
1 Close the zips and tie any ribbons.



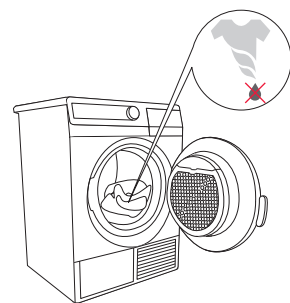
2 Turn the pockets inside out.



3 Close the buttons.



4 Place sensitive clothes in a laundry washing bag.



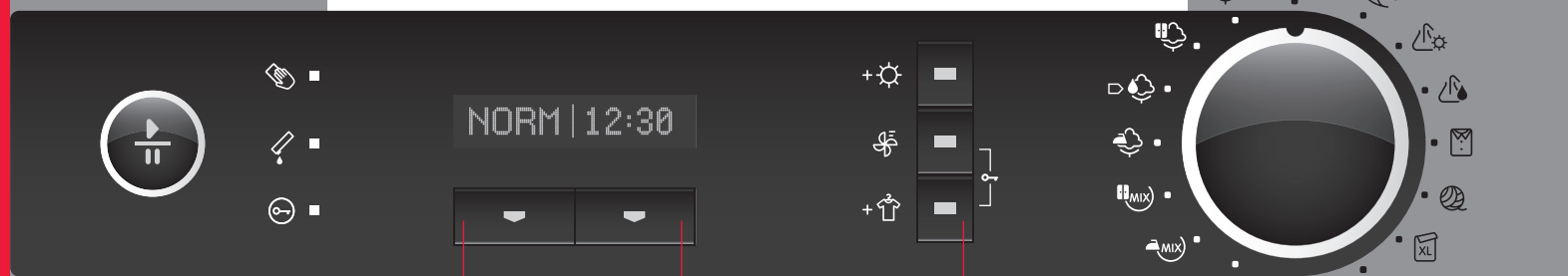
5 Insert wrung or spun laundry into the drum. Recommended spinning rate is at least min. 800 rpm.

STEP 3

PROGRAM SELECTION TABLE

Program	Laundry	Program	Laundry
Cotton Ultra Storage Standard Iron	Non-delicate cotton laundry • towels, terry towels, stockinette, T-shirts, trousers, kitchen cloths etc.	Wool softening 	Wool garments • garments with mixed fibres containing wool, which you wish to soften • sweaters, scarves, shawls etc.
Mix Storage Iron	Clothing made of a mixture of fibres • trousers, T-shirts, suits etc.	Shirts 	Shirts & blouses
Timed program 30' / 60' / 90'	• laundry that needs to be thoroughly dried • a small amount of laundry, or individual garments	Synthetics Standard Ultra	Synthetic garments • T-shirts, trousers, suits, socks and stockings, gowns etc.
Bed linen 	Larger pieces of laundry • bedding, large tablecloths, towels etc. • prevents the laundry from forming into a bulk.	Delicate (Sensitive) 	Laundry that requires drying at lower temperatures • blouses, delicate underwear, shirts with additional decor etc.

STEP 4



5 PRESS TO START / PAUSE

START ▶ light is lit
PAUSE || light flashes

SIGNAL LIGHTS ARE ON:

- when it is necessary to clean the filter;
- when it is necessary to empty the condensate tank;
- when the child lock is on.

4 SELECT MODE

NORM care (default setting)

GENT care for sensitive drying at lower temperature.

3 SELECT START DELAY

Select start delay by pressing the button several times (30 min - 24 h).

Countdown will be indicated on the display unit above the key.

2 SET ADDITIONAL FUNCTIONS

+ EXTRA DRY
Press key up to three times to increase the level of laundry dryness and drying time.

VENTING
for refreshing clean clothes with cool air.

+ ANTICREASE EXTRA
Prevents creasing if laundry is not taken from the dryer immediately after drying (default is 2 h, possible to set from 0-4 h)

1 SELECT THE PROGRAM OR TURN ON/OFF THE DRYER

Turn the knob left or right to select the program.

Turn the knob to the »OFF« position to turn the dryer off.

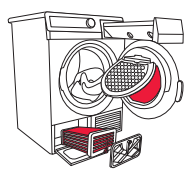
CHILD LOCK
Simultaneously press the two keys and hold for 3 sec.

STEP 5

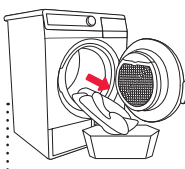
END OF DRYING CYCLE



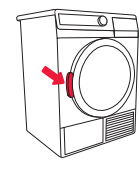
An acoustic signal will indicate the end of the drying cycle. Signal lights will light up and the light on the START/PAUSE key will flash.



1 Open the dryer door and clean the filters (see section Cleaning at the back page).



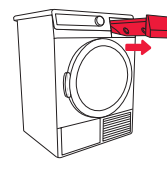
2 Take the laundry from the drum.



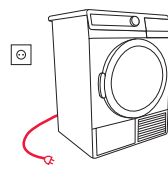
3 Close the dryer door.



4 Rotate the program selector dial to the "OFF" position.



5 Empty the condensate tank.

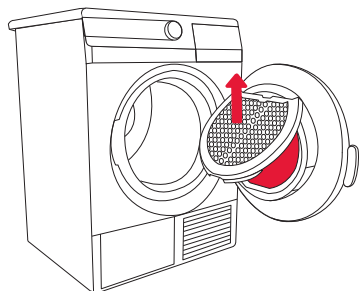


6 Unplug the power cord from the outlet.

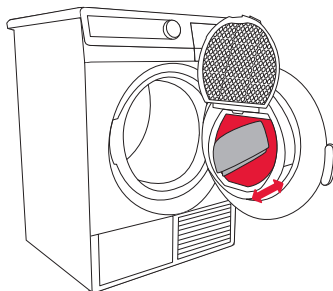
CLEANING THE NET FILTER

! Clean the filters after each drying.

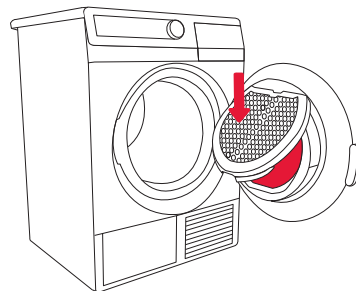
Be careful not to harm yourself during opening/closing of the net filter cover.



1 Lift the filter cover.



2 Scrape the filter cover to remove the layer of lint and threads.

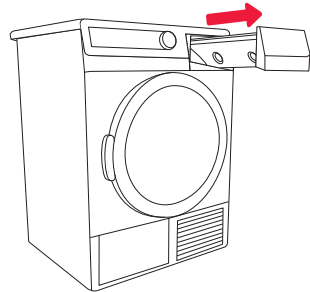


3 Close the filter cover.

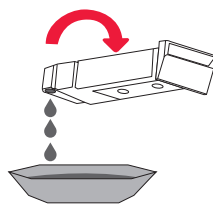
EMPTYING THE CONDENSATE TANK

! Empty the condensate tank after each drying cycle.

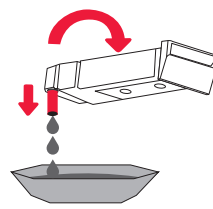
Make sure the remains of the fibres do not enter the dryer as this may clog the system.



1 Remove the condensate tank from the dryer,



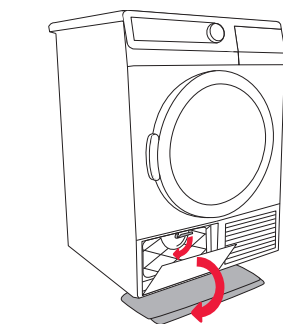
2 turn it upside down above the sink or vessel to empty.



(2) Pull out the spout at the opening for easier emptying (only some models).

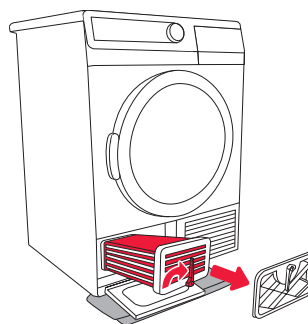
CLEANING OF WATER CONDENSER

! Clean the water condenser and its mounting cavity at least after every five drying cycles.

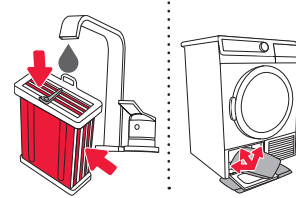


1 Place an absorbent cloth on the floor in front of the dryer.

Open the outer cover, then hold the handle on the left side and pull downwards.



2 Remove the closing lid. Turn the condenser handle upwards and use the handle to pull the condenser out.



3 Rinse both sides of the condenser interior and dry it well.

Use moist cloth to clean the condenser mounting cavity.

en (03-17)
476290
SP 10 EXCL

TIPS

FOR ECONOMICAL USE OF YOUR DRYER

FOR SMOOTH AND SOFT LAUNDRY

TIPS FOR ECONOMICAL USE

- Dry the recommended amount of laundry in each batch (see step 3 - Program Table).
- It is not recommended to dry laundry made of particularly delicate fabrics that may be deformed.
- Drying time will be shorter and power consumption will be lower if the garments are thoroughly wrung or spun before drying.
- Regular cleaning of the filters will lead to optimum drying time and minimum power consumption.
- Use of conditioner in the washing cycle is not necessary when the clothes are dried in a dryer.

TIPS FOR SMOOTH AND SOFT LAUNDRY

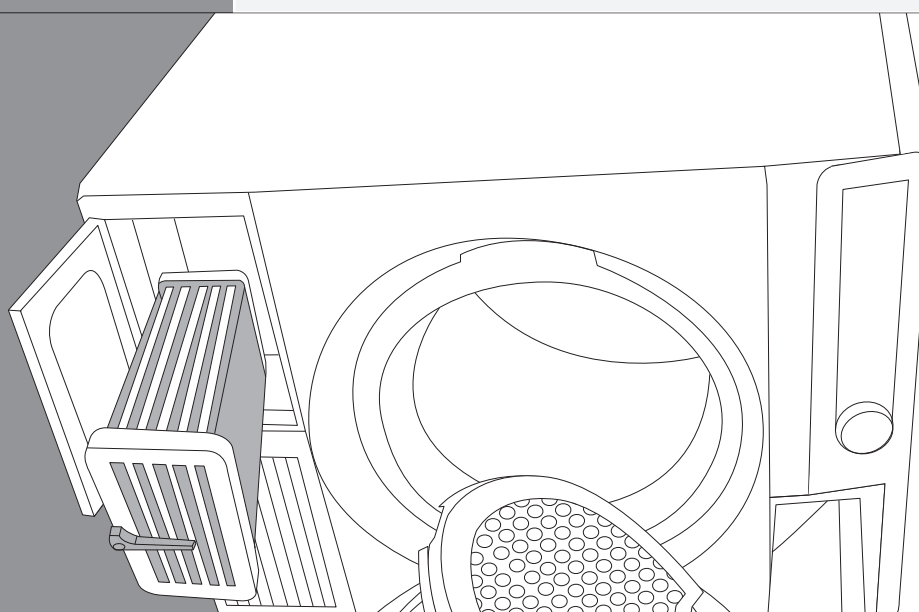
- Select the appropriate drying program to avoid over-drying your laundry and problems with ironing or shrinkage of fabric.
- Remove laundry right after the end of the drying cycle to prevent it from creasing again.
- Dry smaller amount of laundry or single items with the timed program. When drying smaller amounts of laundry, the sensor may not perceive the actual level of moisture.

PROBLEM/ ERROR CAUSE

WHAT TO DO ...?

Problem/error	Cause	What to do ...?
Laundry is not dried, or drying temperature is longer than 4h.	<ul style="list-style-type: none"> • Filters are not clean. • The room is not sufficiently ventilated. • Inappropriate temperature in the room • Laundry was not sufficiently wrung or spun. • Amount of laundry dried in the appliance is too large or insufficient. 	<ul style="list-style-type: none"> • Clean the filters. • Install the dryer in an appropriate room. • Check if the temperature in the room where the dryer is installed is too high (over 25°C) or too low (below 10°C). • Laundry inserted into the dryer was not sufficiently wrung or spun, or an inappropriate drying program was selected.
Unevenly dried laundry.	<ul style="list-style-type: none"> • The amount of laundry dried at a time is too large. • Drying the pieces of different thicknesses • Drying the different types of laundry 	<ul style="list-style-type: none"> • Make sure the laundry is sorted by type and size of items given the selected program.
Error in the drum lighting.	<ul style="list-style-type: none"> • There is no lighting when the dryer door is opened. 	<ul style="list-style-type: none"> • Disconnect the dryer from the power mains and call an authorized service unit.
On display: F3	<ul style="list-style-type: none"> • Full condensate tank • If the condensate tank is empty, there is a pump failure. 	<ul style="list-style-type: none"> • Empty the condensate tank. • Disconnect the appliance and call the nearest service unit.
On display: F4	<ul style="list-style-type: none"> • Clogged filters • If the filters are clean, there may be a compressor failure. 	<ul style="list-style-type: none"> • Clean the filters. • Disconnect the appliance and call the nearest service unit.
On display: "LO"	<ul style="list-style-type: none"> • Steam generator tank is empty 	<ul style="list-style-type: none"> • Add distilled water

Write down the failure/error code: F0, F1, or F2, disconnect the appliance and call the nearest authorized service (call center).



For detailed instructions please read the extended manual.

**QUICK INSTRUCTIONS
HOW TO USE YOUR
DRYER**