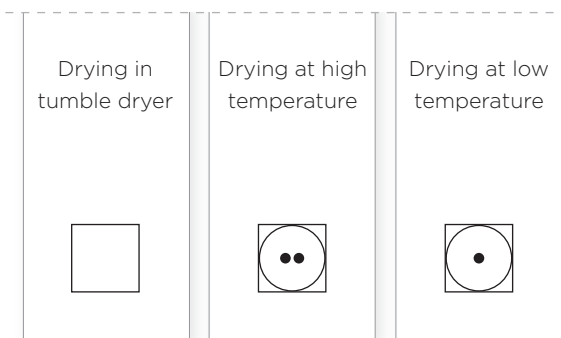


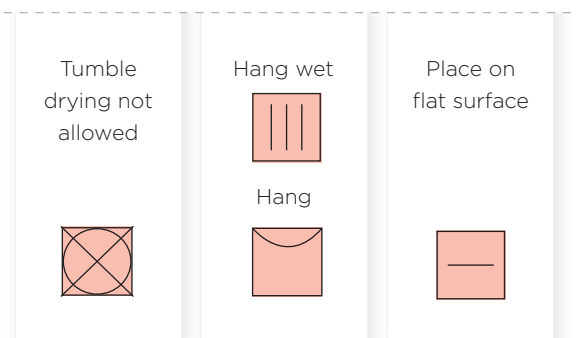
STEP 1

CHECK THE TAGS ON YOUR LAUNDRY

DRYING IN TUMBLE DRYER IS ALLOWED



DRYING IN TUMBLE DRYER IS NOT ALLOWED

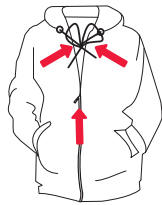


STEP 2

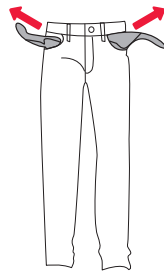
PREPARING THE LAUNDRY AND LOADING THE DRYER



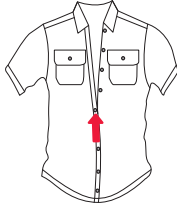
Sort the laundry by type and fabric thickness (see program table below)



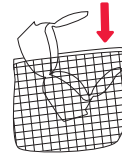
1 Close the zips and tie any ribbons.



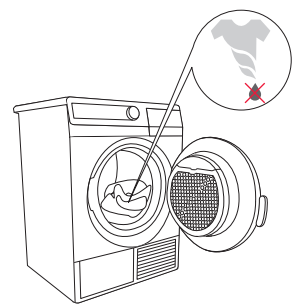
2 Turn the pockets inside out.



3 Close the buttons.



4 Place sensitive clothes in a laundry washing bag.



5 Insert wrung or spun laundry into the drum. Recommended spinning rate is at least min. 800 rpm.

STEP 3

PROGRAM SELECTION TABLE

Program	Laundry	Program	Laundry
Cotton Ultra Storage Standard Iron	Non-delicate cotton laundry • towels, terry towels, stockinette, T-shirts, trousers, kitchen cloths etc.	Refresh steam 	Clothing that you wish to treat with steam • seasonal clothing, preparing the laundry for easier ironing
Mix Storage Iron	Clothing made of a mixture of fibres • trousers, T-shirts, suits etc.	Wool softening 	Wool garments • garments with mixed fibres containing wool, which you wish to soften • sweaters, scarves, shawls etc.
Timed program 30' / 90'	• laundry that needs to be thoroughly dried • a small amount of laundry, or individual garments	Shirts 	Shirts & blouses
Bed linen 	Larger pieces of laundry • bedding, large tablecloths, towels etc. • prevents the laundry from forming into a bulk.	Synthetics Standard Ultra	Synthetic garments • T-shirts, trousers, suits, socks and stockings, gowns etc.
		Delicate (Sensitive) 	Laundry that requires drying at lower temperatures • blouses, delicate underwear, shirts with additional decor etc.

STEP 4



START | PAUSE



3 SELECT START DELAY

Select start delay by pressing the button several times (30 min - 24 h).

Countdown will be indicated on the display unit above the key.

2 SET ADDITIONAL FUNCTIONS

+ EXTRA DRY

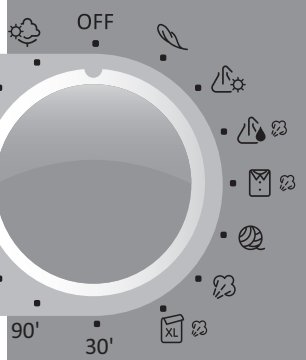
Press key up to three times to increase the level of laundry dryness and drying time.

STEAM

Smooths wrinkles and freshens laundry.

- °C LOWER TEMPERATURE

For delicates, depending upon the selected program where the function is applied.



1 SELECT THE PROGRAM OR TURN ON/OFF THE DRYER

Turn the knob left or right to select the program.

Turn the knob to the »OFF« position to turn the dryer off.

+ - °C = CHILD LOCK
 Simultaneously press the two keys and hold for 3 sec.

4 PRESS TO START / PAUSE

START ► light is lit
 PAUSE || light flashes

SIGNAL LIGHTS ARE ON:

when it is necessary to clean the filter;

when it is necessary to empty the condensate tank;

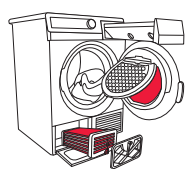
when the child lock is on.

STEP 5

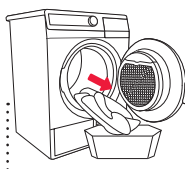
END OF DRYING CYCLE



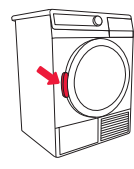
An acoustic signal will indicate the end of the drying cycle. Signal lights will light up and the light on the START/PAUSE key will flash.



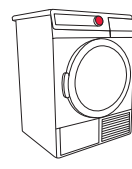
1 Open the dryer door and clean the filters (see section Cleaning at the back page).



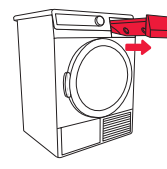
2 Take the laundry from the drum.



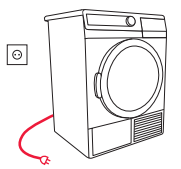
3 Close the dryer door.



4 Rotate the program selector dial to the "OFF" position.



5 Empty the condensate tank.

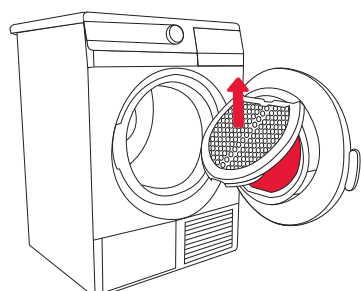


6 Unplug the power cord from the outlet.

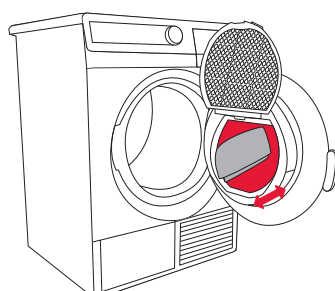
CLEANING THE NET FILTER

! Clean the filters after each drying.

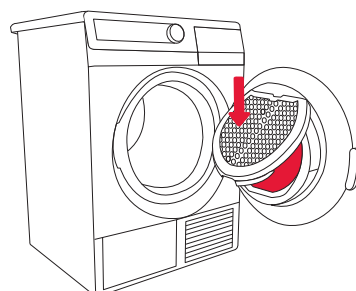
Be careful not to harm yourself during opening/closing of the net filter cover.



1 Lift the filter cover.



2 Scrape the filter cover to remove the layer of lint and threads.



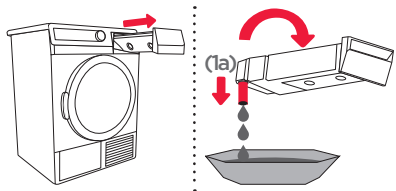
3 Close the filter cover.

EMPTYING THE CONDENSATE TANK

CLEANING THE STEAM GENERATOR TANK FILTER

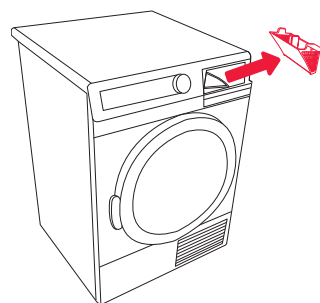
! Empty the condensate tank after each drying cycle.

Make sure the remains of the fibres do not enter the dryer as this may clog the system.



1 Remove the condensate tank and turn it upside down above the sink or vessel to empty.

1a Pull out the spout at the opening for easier emptying (only some models).



2 Each time you empty the condensate tank, clean the steam generator tank filter.

Remove the filter from the support bed in the condensate tank housing.

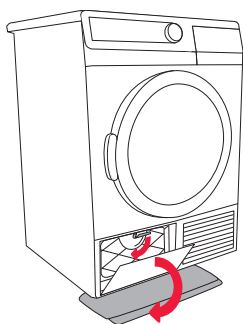


3 Clean the filter thoroughly under running water, if necessary.

Also clean the filter support bed. Put the filter and the condensate tank back into place.

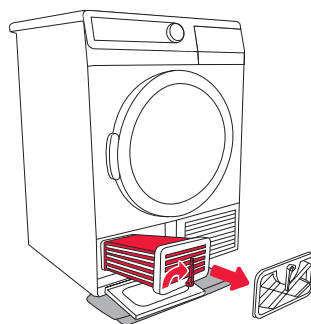
CLEANING OF WATER CONDENSER

! Clean the water condenser and its mounting cavity at least after every five drying cycles.

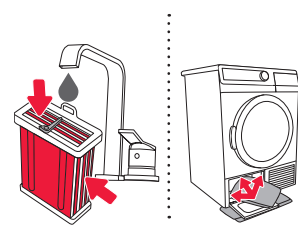


1 Place an absorbent cloth on the floor in front of the dryer.

Open the outer cover, then hold the handle on the left side and pull downwards.



2 Remove the closing lid. Turn the condenser handle upwards and use the handle to pull the condenser out.



3 Rinse both sides of the condenser interior and dry it well.

Use moist cloth to clean the condenser mounting cavity.

en (03-17) 397005 SP 10 CLAS GP

TIPS

FOR ECONOMICAL USE OF YOUR DRYER

FOR SMOOTH AND SOFT LAUNDRY

TIPS FOR ECONOMICAL USE

- Dry the recommended amount of laundry in each batch (see step 3 - Program Table).
- It is not recommended to dry laundry made of particularly delicate fabrics that may be deformed.
- Drying time will be shorter and power consumption will be lower if the garments are thoroughly wrung or spun before drying.
- Regular cleaning of the filters will lead to optimum drying time and minimum power consumption.
- Use of conditioner in the washing cycle is not necessary when the clothes are dried in a dryer.

TIPS FOR SMOOTH AND SOFT LAUNDRY

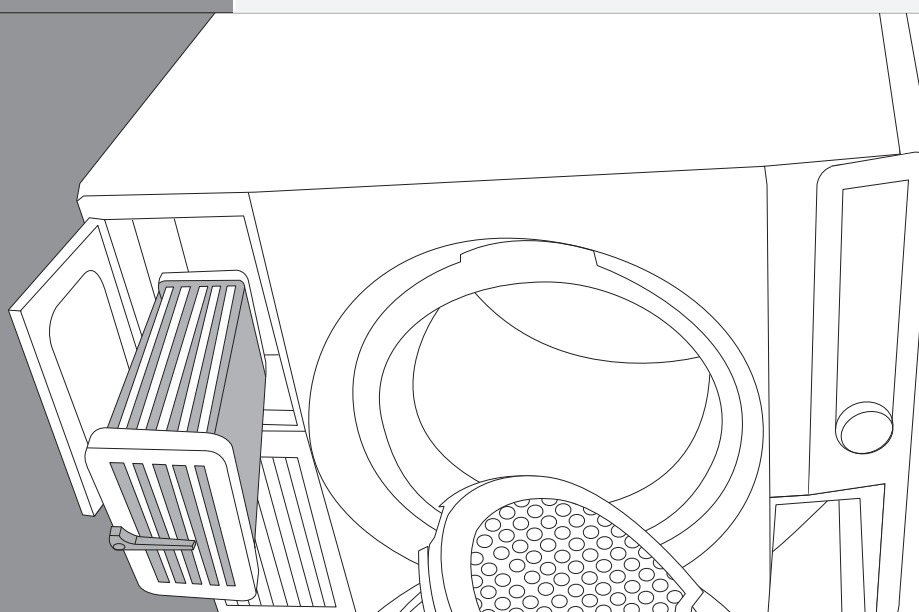
- Select the appropriate drying program to avoid over-drying your laundry and problems with ironing or shrinkage of fabric.
- Remove laundry right after the end of the drying cycle to prevent it from creasing again.
- Use steam generator to straighten the creases and refresh the laundry.
- Dry smaller amount of laundry or single items with the timed program. When drying smaller amounts of laundry, the sensor may not perceive the actual level of moisture.

PROBLEM/ ERROR CAUSE

WHAT TO DO ...?

Problem/error	Cause	What to do ...?
Laundry is not dried, or drying temperature is longer than 4h.	<ul style="list-style-type: none"> • Filters are not clean. • The room is not sufficiently ventilated. • Inappropriate temperature in the room • Laundry was not sufficiently wrung or spun. • Amount of laundry dried in the appliance is too large or insufficient. 	<ul style="list-style-type: none"> • Clean the filters. • Install the dryer in an appropriate room. • Check if the temperature in the room where the dryer is installed is too high (over 25°C) or too low (below 10°C). • Laundry inserted into the dryer was not sufficiently wrung or spun, or an inappropriate drying program was selected.
Unevenly dried laundry.	<ul style="list-style-type: none"> • The amount of laundry dried at a time is too large. • Drying the pieces of different thicknesses • Drying the different types of laundry 	<ul style="list-style-type: none"> • Make sure the laundry is sorted by type and size of items given the selected program.
Error in the drum lighting.	<ul style="list-style-type: none"> • There is no lighting when the dryer door is opened. 	<ul style="list-style-type: none"> • Disconnect the dryer from the power mains and call an authorized service unit.
On display: F3	<ul style="list-style-type: none"> • Full condensate tank • If the condensate tank is empty, there is a pump failure. 	<ul style="list-style-type: none"> • Empty the condensate tank. • Disconnect the appliance and call the nearest service unit.
On display: F4	<ul style="list-style-type: none"> • Clogged filters • If the filters are clean, there may be a compressor failure. 	<ul style="list-style-type: none"> • Clean the filters. • Disconnect the appliance and call the nearest service unit.
On display: "LO"	<ul style="list-style-type: none"> • Steam generator tank is empty 	<ul style="list-style-type: none"> • Add distilled water

Write down the failure/error code: F0, F1, or F2, disconnect the appliance and call the nearest authorized service (call center).



For detailed instructions please read the extended manual.

**QUICK INSTRUCTIONS
HOW TO USE YOUR
DRYER**