



INSTRUCTIONS FOR USE

FREEZER

EN

FN31442E1

Contents

Introduction	3	Switching on the freezer and setting the temperature	13
Welcome to our growing ASKO family!	3	Switching off the freezer	14
Important notes and precautions	4	Intensive freezing (FastFreeze)	14
Before using the appliance for the first time	4	ECO function	15
Important safety instructions	4	Child Lock	15
Important information on the use of appliance	6	Open door alarm	16
Installation and connection	8	High temperature alarm	16
Selecting the location	8	Power failure alarm	17
Connecting the appliance	9	Storing and freezing food	18
Changing the side on which the door opens / building the appliance into a cupboard	9	Recommended distribution	18
Before using the appliance for the first time	10	Avoid contamination of food	18
Before you use the appliance for the first time	10	Freezing and storing foods in the freezer	18
Energy-saving advice	10	Thawing frozen food	19
Description of the appliance	11	Maintenance	21
Operating the appliance	13	Defrosting the appliance	21
Control panel	13	Cleaning the appliance	21
		Faults	23
		Faults table	23
		Environmental aspects	25
		Disposal of packaging and appliance	25

Welcome to our growing ASKO family!

We are proud of our appliances. We hope that this appliance will be an appreciated and dependable aid for many years to come.

Please read the operating instructions before use. They include general tips, information about the settings and adjustments you can make, and the best way to take care of your appliance.

WARNING!

Read the safety instructions before using the appliance!

Read these instructions thoroughly before you first use the appliance, and keep the instructions for future use.

A section of the installation instructions is supplied separately.

Link to the EU EPREL database

Information about your product can be found at www.asko.com/energylabel, where you will also find a link to the European Product Database for Energy Labelling, EPREL. Or else visit <https://eprel.ec.europa.eu> directly. Follow the instructions to search by model name (see the information on the serial number plate).

The following symbols are used throughout the manual and they have the following meanings:

INFORMATION!

Information, advice, tip, or recommendation

WARNING!

Warning – general danger

DANGER OF FIRE!

Warning; risk of fire / flammable materials

Important notes and precautions

Before using the appliance for the first time

Before connecting the appliance to the power mains, please read carefully the instructions for use which describe the appliance and its correct and safe use. The instructions apply to several appliance types/models; thus, settings or equipment may be described herein which is not available in your appliance. We recommend saving this instruction manual for future reference and attach it to the appliance if it is sold in the future.

Check for any damage or irregularities on your appliance. If you find your appliance is damaged, notify the retailer from which you have purchased the appliance.

Before connecting the appliance to the power mains, let the appliance rest in a vertical position for a minimum of 2 hours. This will reduce the possibility of operation faults due to the effect of transport on the cooling system.

Important safety instructions



WARNING! Risk of fire/flammable materials.

The appliance must be connected to the power mains and grounded in compliance with the effective standards and regulations.

WARNING! Do not locate multiple portable socket-outlets or portable power supplies at the rear of the appliance.

Before cleaning the appliance, unplug it from the power mains (unplug the power cord from the wall outlet).



ELECTRIC SHOCK!

WARNING! If the supply cord is damaged, it must be replaced by the manufacturer, its service agent or similarly qualified persons in order to avoid a hazard.



ELECTRIC SHOCK!

WARNING! When positioning the appliance, ensure the supply cord is not trapped or damaged.



ELECTRIC SHOCK!

If LED lighting does not work, call a service technician. Do not attempt a repair of the LED lighting yourself, as there is danger of contact with high voltage!

Important notes and precautions

WARNING!

WARNING! Do not use electrical appliances inside the food storage compartments of the appliance, unless they are of the type recommended by the manufacturer.

WARNING!

WARNING! Do not use mechanical devices or other means to accelerate the defrosting process, other than those recommended by the manufacturer.

WARNING!

WARNING! To avoid any hazard resulting from poor stability of the appliance, make sure it is installed as instructed.

Freeze burn hazard

To avoid freeze burn, never put frozen food in your mouth and do not touch frozen food.

Safety of children and vulnerable persons

The appliance is not intended for use by persons (including children) with reduced physical, sensory or mental capabilities, or lack of experience and knowledge, unless they have been given supervision or instruction concerning use of the appliance by a person responsible for their safety.

Children should be supervised to ensure that they do not play with the appliance.

Cleaning and user maintenance shall not be made by children without supervision.

Remove the packaging intended to protect the appliance or particular parts during transport and keep it outside the reach of children. It presents danger of injury or suffocation.

Important notes and precautions

When removing a used appliance, disconnect the power cord, remove the door, and leave the shelves in the appliance. This will prevent children from locking themselves in the appliance.

For European markets only

This appliance can be used by children aged from 8 years and above and persons with reduced physical, sensory or mental capabilities or lack of experience and knowledge if they have been given supervision or instruction concerning use of the appliance in a safe way and understand the hazards involved.

Children shall not play with the appliance.

Cleaning and user maintenance shall not be made by children without supervision.

Children aged from 3 to 8 years are allowed to load and unload refrigerating appliances.

Warning regarding the refrigerant

The appliance contains a small amount of an environmentally friendly yet flammable gas R600a. Make sure that no parts of the cooling system are damaged. A gas leak is not hazardous to the environment, but it could cause eye injury or fire.

In case of a gas leak, ventilate the room thoroughly, disconnect the appliance from the power mains, and call a service technician.

Important information on the use of appliance

WARNING! This appliance is intended to be used in household and similar applications such as:

- staff kitchen areas in shops, offices and other working environments;
- farm houses and by clients in hotels, motels and other residential type environments;
- bed and breakfast type environments;

Important notes and precautions

- catering and similar non-retail applications.

WARNING!

WARNING! Keep ventilation openings, in the appliance enclosure or in the built-in structure, clear of obstruction.

The appliance may not be used outdoors and it may not be exposed to rain.

Do not store explosive substances such as aerosol cans with a flammable propellant in this appliance.

If the appliance will be out of use for an extended period of time, switch it off using the relevant button, and unplug it from the power mains. Empty the appliance, defrost it, clean it, and leave the door ajar.

In case of an error or power supply failure, do not open the freezer compartment unless the freezer has not operated for over 16 hours. After this period, use the frozen food or provide sufficient cooling (e.g. a replacement appliance).

Technical information on the appliance

Rating plate can be found in the appliance interior. It indicates data on voltage, gross and net volume, type and amount of refrigerant, and information on the climate classes.

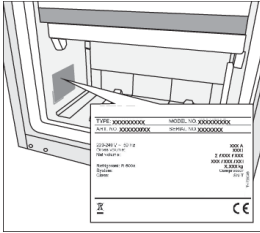
If the language on the rating plate is not the language of your choice or the language of your country, replace it with the one supplied.

WARNING!

WARNING! Do not damage the refrigerant circuit.

Installation and connection

Selecting the location



- Place the appliance in a dry and well aired room. The permitted ambient temperature range for the appliance depends on the appliance's climate class, which is shown on the type plate.

- Do not place the appliance near a source of heat, such as a gas cooker, radiator or boiler, etc., and do not expose it to direct sunlight.

Description	Class	Ambient temperature range °C	Relative humidity
Extended temperate	SN	+10 to +32	≤75%
Temperate	N	+16 to +32	
Subtropical	ST	+16 to +38	
Tropical	T	+16 to +43	

WARNING!

Do not place the appliance in a room where the temperature can fall below 5 °C: the appliance may not work properly or become defective!

WARNING!

The appliance is not suitable for outdoor use and it may not be exposed to rain.

- The appliance must be placed at a distance of at least 5 cm from an electrical or gas cooker and at least 30 cm from a radiator or heater. An insulation panel must be fitted when these distances cannot be kept.
- The appliance must be placed at a distance of about 5 cm from the wall, back and sides of a cupboard. A kitchen cupboard above the refrigerator must have a gap of at least 5 cm between the back of the cupboard and the wall. This is needed to make sure that there is sufficient cooling air for the condenser.
- The plug of the installed appliance must remain accessible!

WARNING!

Place the appliance in a room with a sufficient volume of air. The room must have a volume of at least 1 m³ of air for every 8 grams of refrigerant. The quantity of refrigerant is shown on the type plate on the inside of the appliance.

- The kitchen unit in which the appliance is to be built in must have an opening of at least 200 cm² in its base to allow sufficient air to circulate.
- The appliance's air outlet is at the top. Make sure that the outlet is not blocked. Blocking the outlet can result in damage to the appliance.

WARNING!

Warning:

An anti-condensation accessory must be installed before built-in appliances are installed next to each other in a cupboard or surround. **For safety reasons, this must be installed by a recognized installer!**

Connecting the appliance

- Connect the appliance to the power supply with a plug. The socket must be earthed. The nominal voltage and frequency required for the appliance are shown on the appliance's type plate/label with basic information.
- The appliance must be connected to the mains and earthed in accordance with the prevailing standards and regulations. The appliance can withstand small variations in the mains voltage to a maximum of plus or minus 6%.

WARNING!

When you are not going to use the appliance for a longer period then switch it off with the appropriate key and disconnect it from the mains. Empty, defrost and clean the appliance, and leave the door ajar.

WARNING!

Freeze burn hazard

To avoid freeze burn, never put frozen food in your mouth and do not touch frozen food.

WARNING!

In the event of a defect or power cut, do not open the freezer compartment unless the appliance has been out of operation for more than the hours indicated on the appliance's type plate (temperature rise time). After this time, you must either use the frozen food or make sure that it is properly cooled (for example, by transferring it to another appliance).

Changing the side on which the door opens / building the appliance into a cupboard

Information about changing the side on which the door opens and building the appliance into a cupboard is enclosed in separate installation instructions.

Before using the appliance for the first time

Before you use the appliance for the first time

Do not connect the appliance to the mains until you have carefully read the instructions for the correct and safe use of the appliance. As these instructions are for various types and models, it is possible that the instructions for use refer to settings or parts that are not available on your appliance. We recommend that you keep these instructions for future use. If you sell the appliance, enclose them with the appliance.

Inspect the appliance for damage and/or irregularities. If the appliance is damaged, contact the store that sold you the appliance.

Allow the appliance to stand upright for at least 4 hours before you connect the appliance to the mains. This reduces the risk of malfunctions resulting from transport effects on the refrigerant unit.

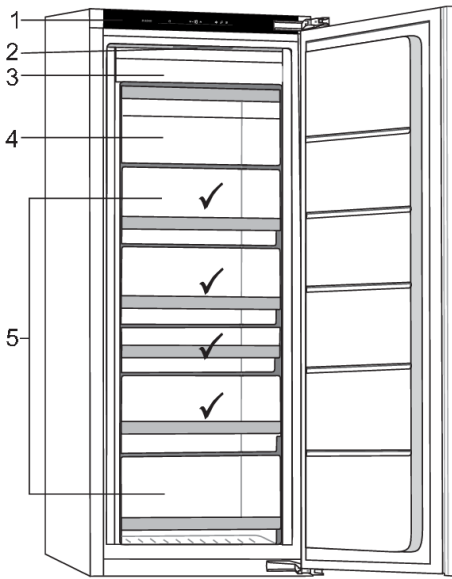
Before using the appliance for the first time, the interior and all internal accessories should be cleaned with lukewarm water and a neutral cleaning agent. Wipe the cleaned parts with a cloth with clean water and then dry them thoroughly.

If you use the appliance for the first time, do not put food into the appliance until the temperature has decreased to the set temperature.

Energy-saving advice

- Install the appliance as stated in the instructions for use.
- Do not open the door more than necessary.
- Never cover or obstruct the ventilation openings.
- Replace a door seal that is damaged or no longer seals properly as quickly as possible.
- Store food in well-sealed containers or suitable packaging.
- Allow food to cool to room temperature before you put it in the appliance.
- Defrost food in the refrigerator compartment.
- Space the shelves evenly in the refrigerator compartment. Place the food so that the air can circulate freely in the appliance (follow the recommendations for the location of foods enclosed in the instructions).
- The lower the set temperature, the higher the power consumption.
- When the appliance is equipped with a fan then make sure that the ventilation openings are kept clear.

Description of the appliance



1. Control panel
 2. LED interior lighting
 3. NoFrost freezer unit
 4. Freezer compartment
 5. Freezer drawers
- ✓ Best location for freezing fresh food.

NoFrost

With the NoFrost system, you no longer need to defrost the freezer.

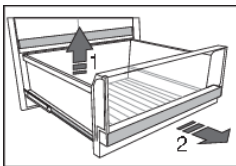
Door closure

The door closes itself once the opening angle is less than 20°. The soft-close door mechanism closes the door gently.

LED interior lighting

The appliance has LED lighting.

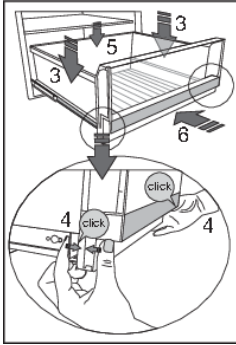
Drawers



A number of drawers are mounted on fully extending telescopic rails and are fitted with a soft-close system.

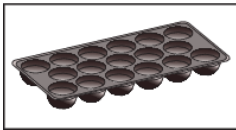
To remove a drawer from the rails, pull the drawer fully out. Lift the back of the drawer (1). Pull the drawer to you (2) and then lift the drawer from the rails.

Description of the appliance



To fit the drawer onto the rails, pull the two rails fully out. Place the drawer on the rails (3). In the front, press the drawer and the rails towards each other on the right and the left side until you hear a “click” (4). Press the back of the drawer downwards if necessary (5). Finally, slide the drawer on the rails fully in (6).

Ice cube tray (IceTray)

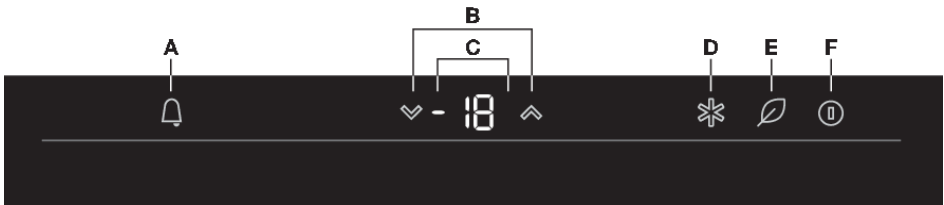


To make ice cubes, fill the tray with water and lay it horizontally in the freezer.

Control panel

💡 INFORMATION!

- For best results, touch the keys with as much of the fingertip as possible.



- A. Alarm key
- B. Temperature adjustment keys
- C. Display of the set temperature
- D. FastFreeze key (intensive freezing function)
- E. ECO/Child Lock key
- F. On/Off key

Switching on the freezer and setting the temperature



1. Touch the On/Off key.
 - The freezer turns on.
2. Use the adjustment keys to adjust the temperature.

💡 INFORMATION!

- The temperature can be set to between $-24\text{ }^{\circ}\text{C}$ and $-16\text{ }^{\circ}\text{C}$. The recommended temperature is $-18\text{ }^{\circ}\text{C}$ (factory setting).

⚠️ WARNING!

After you have switched on the appliance it will take several hours for the temperature to decrease to the set temperature. Do not put food into the appliance until the temperature has decreased to the set temperature.

Operating the appliance

INFORMATION!

- The adjusted temperature flashes on the control panel when you touch the adjustment keys. The selected temperature setting is saved three seconds after the last key is touched.

Switching off the freezer



1. Touch the On/Off key for three seconds.
 - The freezer turns off.

Intensive freezing (FastFreeze)

This appliance has an intensive freezing function. This function decreases the temperature in the freezer compartment as quickly as possible. Activate this function 24 hours before you put a large quantity of fresh food in the appliance.

WARNING!

When the intensive freezing function is selected, the appliance works at maximum capacity. It may then make more noise for a while.



1. Touch the FastFreeze key.
 - 'FF' is shown in the display to indicate that the FastFreeze function is activated.
2. Touch the FastFreeze key again to disable the function.
 - The display once again shows the set temperature.



WARNING!

Adjusting the temperature of the freezer compartment while the intensive freezing function is activated will immediately disable the intensive freezing function.

WARNING!

Selecting the ECO function while the intensive freezing function is activated will immediately disable intensive freezing.

WARNING!

When the intensive freezing function is not manually disabled then the function will be automatically disabled after about two days. The temperature then returns to the latest set temperature.

WARNING!

Should a power failure occur while the function is activated then the function will be activated again when the power is restored.

ECO function

This appliance has an ECO function. When the ECO function is selected, the appliance works with the optimum settings. The ECO function has no time limit and remains activated until the function is disabled.

Activating/disabling the ECO function



1. Touch the ECO/Child Lock key.
 - The lighting of the touch key comes on: the function is activated.
2. Touch the ECO/Child Lock key again.
 - The function is disabled.

WARNING!

Note!

Activating the ECO function disables the FastFreeze function.

WARNING!

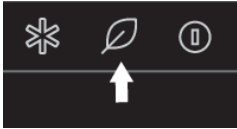
Should a power failure occur while the ECO function is activated then the function will be activated again when the power is restored.

Operating the appliance

Child Lock

This function can be used to prevent unintended adjustments of the appliance's settings. All keys other than the ECO/Child Lock key are disabled.

Switching the Child Lock on or off



1. Touch the ECO/Child Lock key for three seconds.
 - 'LL' is shown in the display to indicate that the Child Lock is activated.
2. Touch the ECO/Child Lock key again for three seconds.
 - The function is disabled.



Open door alarm

An alarm signal sounds when a door is open for too long. The alarm key flashes in the display. The lighting will begin to flash after a few minutes.

Stopping the alarm

1. Close the door.
 - The alarm will stop sounding.

WARNING!

When the door is still open after 10 minutes, the appliance will switch to safe mode. The LED lighting goes off. Error code E9 will be shown in the display (see the chapter 'Faults').

WARNING!

If you only switch off the alarm by touching any key, the alarm will switch on again after some time because the door is still open.

High temperature alarm

A signal will sound when the temperature in the appliance is too high. The alarm key and the set temperature shown in the display will flash. A high temperature can be caused for several reasons:

- The door has been opened for too long or too frequently.
- The door does not seal properly.
- Too much fresh food has been put in at the same time.

WARNING!

Every time the appliance is switched on again, it takes a while until the correct temperature is reached. For this reason, the alarm is disabled for the first 24 hours after the appliance is switched on to prevent the unnecessary activation of the alarm.

Stopping the alarm

1. Touch any key to stop the alarm.
 - The alarm will stop sounding.
 - The alarm key and the set temperature shown in the display continue to flash while the temperature is still too high.

WARNING!

When the alarm is not stopped manually and the temperature remains too high, the signal will sound for the first minutes of every half hour and when the door is opened.

Power failure alarm



The appliance cannot cool/freeze during a power failure. Once the power has been restored, the temperature in the appliance will be measured. A signal will sound when the temperature in the appliance is too high. The alarm key will flash and 'PF' (Power Failure) will be shown in the display.

WARNING!

Always check the food in the appliance when 'PF' is shown in the display! Food can spoil at a temperature that is too high.

Stopping the alarm

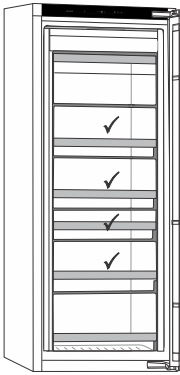
1. Touch any key to stop the alarm.
 - The alarm will stop sounding.
 - The set temperature will be shown again in the display.
 - The alarm key and the set temperature shown in the display continue to flash while the temperature is still too high.

WARNING!

When the alarm is not stopped manually then the signal will sound for the first minutes of every half hour and when the door is opened.

Storing and freezing food

Recommended distribution



The best location for freezing fresh food is marked with a ✓.

⚠ WARNING!

Do not store lettuce, eggs, apples, pears, grapes, peaches, yoghurt, buttermilk, sour cream or mayonnaise in the freezer.

Avoid contamination of food

To avoid contamination of food, please respect the following instructions:

- Opening the door for long periods can cause a significant increase of the temperature in the compartments of the appliance.
- If the refrigerating appliance is left empty for long periods, switch off, defrost, clean, dry, and leave the door open to prevent mould developing within the appliance.

Freezing and storing foods in the freezer

Important recommendations for freezing fresh food

- The maximum quantity of food that you can put in the freezer in one go is stated on the type plate. Putting more than this maximum quantity of food into the freezer will slow the freezing process and reduce the quality. Moreover, this will also harm the quality of frozen food already stored in the freezer.
- Use only good-quality fresh food that is suitable for freezing.
- Allow hot food to cool to room temperature.
- Food needs to be frozen quickly. It is recommended that you use small packs.
- Use air and watertight packaging to prevent the food from drying out and lose its vitamins.
- Note the type and quantity of the food on the packaging, together with the date on which it was frozen.
- Do not allow fresh food to come into contact with frozen food.
- You can remove all the drawers to make use of the total volume of the freezer compartment. Put the food directly on a shelf and on the base of the freezer.

Freezing small quantities of fresh food/making ice cubes

See the chapter 'Recommended distribution' for the best location for freezing fresh food (1 to 2 kilograms) and making ice cubes.

Freezing large quantities of fresh food

- Activate the intensive freezing function 24 hours before you plan to freeze the food.
- Distribute the fresh food equally between all the drawers in the freezer compartment.
- After 24 hours, you can transfer the food to another compartment in the freezer and then freeze a new batch of food.

Important recommendations for storing frozen food

- Follow the manufacturer's instructions for the storage and use of frozen food. Take note of the recommended storage temperature and use-by date stated on the packaging.
- Use only food in undamaged packaging that has been stored at a temperature of -18 °C or lower.
- Do not buy food covered in frost. This indicates that the food has thawed or partially thawed several times and, as a result, is of inferior quality.
- Make sure that the food does not thaw during transport. An increase in its temperature will shorten the storage life and harm the quality of the food.

Recommended storage times of frozen food in the freezer

Type of food	Storage life
Fruit, beef	10 to 12 months
Vegetables, veal, poultry	8 to 10 months
Venison	6 to 8 months
Pork	4 to 6 months
Finely chopped or minced meat	4 months
Bread, pastas, cooked dishes, whitefish	3 months
Offal	2 months
Smoked sausage, bluefish	1 month

Thawing frozen food

- Thawing is an important step in storing food preserved by freezing. Food must be thawed in the correct way.
- Suitable methods of thawing food are:
 - in the refrigerator;
 - in cold water;
 - in a microwave or conventional oven with a suitable thaw program.
- Some frozen products can be prepared without needing to thaw them first. The manufacturer will state this on the packaging.
- The food needs to be packed in small portions. In this way the food thaws faster.
- Use partially or completely thawed food as quickly as possible. The bacteria in thawed food are reactivated and the food will spoil rapidly. This applies in particular to fruit, vegetables and ready-made food.

Storing and freezing food

- Do not refreeze partially or completely thawed food.

Defrosting the appliance

Defrosting of the NoFrost freezer

The NoFrost freezer defrosts automatically. Any frost deposits will then disappear.

Any ice or frost deposits that nevertheless form in the freezer compartment can be caused by unusual use of the appliance (opening the door too often and too long or poorly sealing door, etc.). The freezer will then need to be defrosted manually.

Manual defrosting of the NoFrost freezer



1. Simultaneously touch the adjustment key on the right and the ECO/Child Lock key for a few seconds.

- 'CL' is shown in the display to indicate that the defrost process has begun.
- The temperature is shown once again in the display when the defrost process is finished.



WARNING!

Switch off the appliance in the event of extreme ice formation. Remove the food in the freezer and protect it so that it cannot partially or completely thaw. Clean and dry the interior of the freezer. Switch on the appliance and adjust the temperature to the required setting before you put the food back into the freezer.

Cleaning the appliance

WARNING!

Switch off the appliance and remove the plug from the socket before you start cleaning it.

WARNING!

Do not use abrasive cleaning agents, as they can damage the surface.

INFORMATION!

Activate the intensive freezing function 24 hours before you plan to clean the freezer.

- Regularly clean the interior of the appliance with lukewarm water. If so required, add a neutral cleaning agent or special refrigerator cleaner to the water. Clean all surfaces with a soft cloth. Wipe the cleaned parts with a cloth with clean water and then dry them thoroughly.
- Do not put parts of the appliance in a dishwasher: this could damage them.

Maintenance

WARNING!

When you are not going to use the appliance for a longer period then switch it off with the appropriate key and disconnect it from the mains. Empty, defrost and clean the appliance, and leave the door ajar.

Faults table

When you have any doubts about whether your appliance is working properly you should not immediately assume that it is defective. We recommend that you should in any case check the points in the following table.

Problem	Cause/Solution
Appliance is connected to the power supply but is not working.	<ul style="list-style-type: none"> • Check that the socket is live and that the appliance is switched on.
Appliance cools continuously for a long time.	<p>The compressor is operating for a longer time at low capacity (low energy consumption / high efficiency). This is the most efficient form of operation. The following factors can also influence the appliance's operation:</p> <ul style="list-style-type: none"> • The ambient temperature is too high. • The door has been opened for too long or too frequently. • The door is not closed properly. • The door does not seal properly (the seal is dirty, the door is misaligned or the seal is damaged, etc.). • Too much fresh food has been put in at the same time. • Insufficient air circulation around the compressor and condenser. Check that the ventilation around the appliance is sufficient (see the separate installation instructions).
Excessive ice formation in the freezer.	<ul style="list-style-type: none"> • The door has been opened for too long or too frequently • The door is not closed properly. • The door does not seal properly (the seal is dirty, the door is misaligned or the seal is damaged, etc.).
Alarm key and/or temperature display flashing.	<ul style="list-style-type: none"> • The door has been opened for too long or too frequently. • The door does not seal properly (the seal is dirty, the door is misaligned or the seal is damaged, etc.). • Too much fresh food has been put in at the same time.
Door does not open easily.	<p>You are trying to open the appliance's door just after you have closed the door. Then opening the door is difficult. When you open the door, cold air escapes from the appliance and is replaced by warm air from the surroundings. As this air cools a slight vacuum is created that makes it more difficult to open the door. The situation returns to normal after a few minutes, and the door opens easily again.</p>
Some or all of the LED lighting does not work.	<ul style="list-style-type: none"> • Consult a service technician about LED lighting that is not working. For safety reasons, you are not allowed to repair LED lighting yourself. • This product contains a light source of energy efficiency class E.
Appliance makes a noise.	<ul style="list-style-type: none"> • The appliance is cooled by a refrigeration system with a compressor (and with some models, also a fan) that makes a noise. The noise

Faults

Problem	Cause/Solution
	<p>level depends on the installation of the appliance, its correct use and its age.</p> <ul style="list-style-type: none"> • When you connect the appliance to the power supply the noise made by the compressor or flowing refrigerant may be slightly louder. This is not indicative of a defect, and has no effect on the service life of the appliance. The appliance will make less noise after a while. • The appliance may be temporarily noisier after the door has been opened for too long or too frequently, a large quantity of fresh food has been put in the appliance or the intensive freezing function has been activated.
'LL' code shown in the display.	Child lock has been activated. See the chapter 'Child Lock'.
'PF' code shown in the display.	Lengthy power failure. See the chapter 'Power failure alarm'.
Error code E0 shown in the display.	The touch keys do not respond. Call the service centre to make an appointment for repair work. The appliance operates in the safe mode until it has been repaired. The appliance automatically retains the most suitable temperature for each compartment.
Error code E1, E2 or E3 shown in the display.	A temperature sensor is defective. Call the service centre to make an appointment for repair work. The appliance operates in the safe mode until it has been repaired. The appliance automatically retains the most suitable temperature for each compartment.
Error code E9 shown in the display.	<ul style="list-style-type: none"> • A door has been open for too long: close the door. • If the lighting in the compartment has also stopped working then the door sensor is defective. Call the service centre to make an appointment for repair work. The appliance operates in the safe mode until it has been repaired. The appliance automatically retains the most suitable temperature for each compartment.

If you are unable to solve the problem then contact the service centre. When you do so, state the type, model and serial number shown on the type plate or label on the inside of the appliance.

Disposal of packaging and appliance

This appliance is made from sustainable materials. This appliance must be disposed of in a responsible manner at the end of its service life. Contact the local authorities for information about the method.

INFORMATION!

See also the chapter 'Disposal' in the Safety instructions.

The packaging of the appliance is recyclable. The following materials may have been used:

- Cardboard.
- Polyethylene foil (PE).
- CFC-free polystyrene (hard PS foam).

These materials must be disposed of in a responsible manner and in accordance with government regulations.



The appliance is marked with a crossed out wheeled bin symbol to draw your attention to the requirement for the separate disposal of domestic electrical appliances. This means that the appliance may not be disposed of in unsorted household waste at the end of its service life. The appliance must be taken to a special municipal waste processing location for separated waste or to a dealer who provides this service.

Collecting and disposing of domestic appliances separately avoids detrimental consequences for humans and the environment. This ensures that the materials used to make the appliance can be recovered and that substantial savings in the use of energy and raw materials can be achieved.



Declaration of conformity

We hereby declare that our products conform to the applicable European Directives, Regulations and requirements, as well as all requirements in the standards to which reference is made.

ASKO

Inspired by Scandinavia

The instructions for use can also be found on our website: www.asko.com



917080-a1

