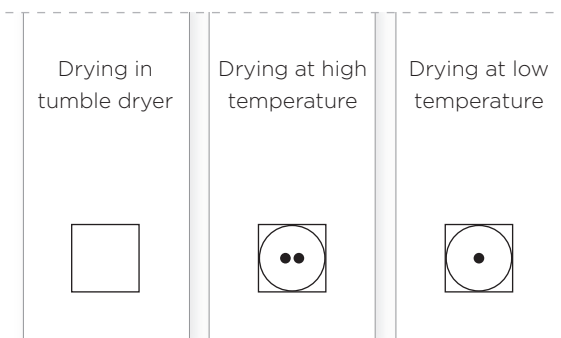


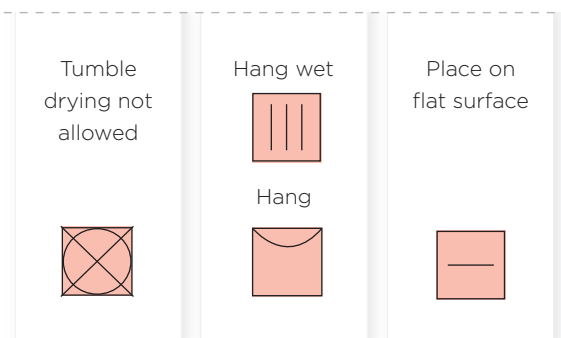
## STEP 1

CHECK THE TAGS ON YOUR LAUNDRY

**DRYING IN TUMBLE DRYER IS ALLOWED**



**DRYING IN TUMBLE DRYER IS NOT ALLOWED**

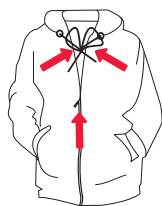


## STEP 2

PREPARING THE LAUNDRY AND LOADING THE DRYER



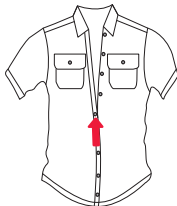
Sort the laundry by type and fabric thickness (see program table below)



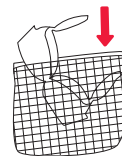
**1** Close the zips and tie any ribbons.



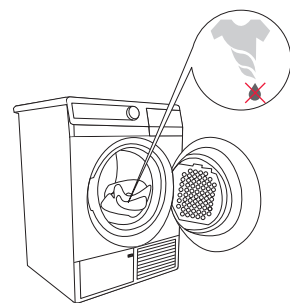
**2** Turn the pockets inside out.



**3** Close the buttons.



**4** Place sensitive clothes in a laundry washing bag.



**5** Insert wrung or spun laundry into the drum. Recommended spinning rate is at least min. 800 rpm.

## STEP 3

PROGRAM SELECTION TABLE

Program	Laundry	Program	Laundry
<b>Cotton</b> Ultra Storage Standard Iron	<b>Non-delicate cotton laundry</b> • towels, terry towels, stockinette, T-shirts, trousers, kitchen cloths etc.	<b>Wool softening</b> 	<b>Wool garments</b> • garments with mixed fibres containing wool, which you wish to soften • sweaters, scarves, shawls etc.
<b>Mix</b> Storage Iron	<b>Clothing made of a mixture of fibres</b> • trousers, T-shirts, suits etc.	<b>Shirts</b> 	<b>Shirts &amp; blouses</b>
<b>Timed program</b> 30' / 60' / 90'	• laundry that needs to be thoroughly dried • a small amount of laundry, or individual garments	<b>Synthetics</b> Standard Ultra	<b>Synthetic garments</b> • T-shirts, trousers, suits, socks and stockings, gowns etc.
<b>Bed linen</b> 	<b>Larger pieces of laundry</b> • bedding, large tablecloths, towels etc. • prevents the laundry from forming into a bulk.	<b>Delicate (Sensitive)</b> 	<b>Laundry that requires drying at lower temperatures</b> • blouses, delicate underwear, shirts with additional decor etc.

## STEP 4



START | PAUSE

**4** PRESS TO START / PAUSE

START ▶ light is lit  
PAUSE || light flashes

SIGNAL LIGHTS ARE ON:

- when it is necessary to clean the filter;
- when it is necessary to empty the condensate tank;
- when the child lock is on.

**3** SELECT START DELAY

Select start delay by pressing the button several times (30 min - 24 h).

Countdown will be indicated on the display unit above the key.

**2** SET ADDITIONAL FUNCTIONS

**+ EXTRA DRY**

Press key up to three times to increase the level of laundry dryness and drying time.

**+ VENTING**

for refreshing clean clothes with cool air.

**+ ANTICREASE EXTRA**

Prevents creasing if laundry is not taken from the dryer immediately after drying (default is 2 h, possible to set from 0-4 h)

**1** SELECT THE PROGRAM OR TURN ON/OFF THE DRYER

Turn the knob left or right to select the program.

Turn the knob to the »OFF« position to turn the dryer off.

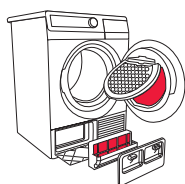
**+ CHILD LOCK**  
Simultaneously press the two keys and hold for 3 sec.

## STEP 5

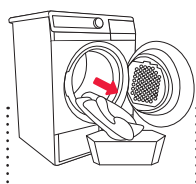
END OF DRYING CYCLE



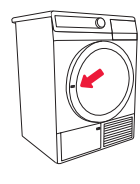
An acoustic signal will indicate the end of the drying cycle. Signal lights will light up and the light on the START/PAUSE key will flash.



**1** Open the dryer door and clean the filters (see section Cleaning at the back page).



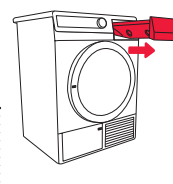
**2** Take the laundry from the drum.



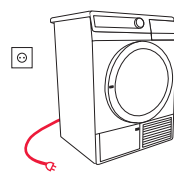
**3** Close the dryer door.



**4** Rotate the program selector dial to the "OFF" position.



**5** Empty the condensate tank.

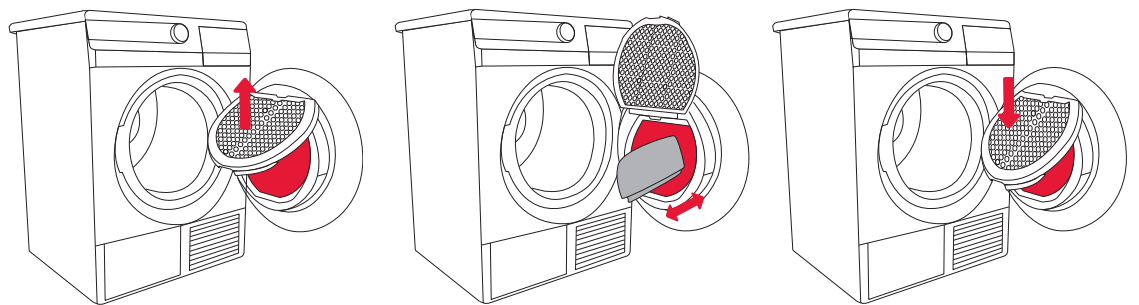


**6** Unplug the power cord from the outlet.

### CLEANING THE NET FILTER

**!** Clean the filters after each drying.

Be careful not to harm yourself during opening/closing of the net filter cover.



**1** Lift the filter cover.

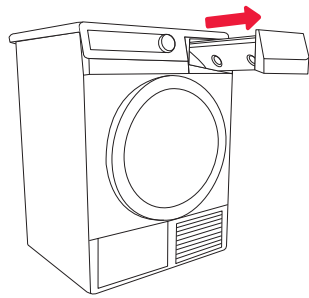
**2** Scrape the filter cover to remove the layer of lint and threads.

**3** Close the filter cover.

### EMPTYING THE CONDENSATE TANK

**!** Empty the condensate tank after each drying cycle.

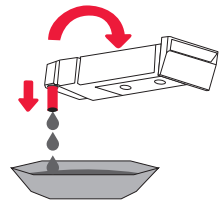
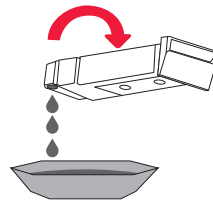
Make sure the remains of the fibres do not enter the dryer as this may clog the system.



**1** Remove the condensate tank from the dryer,

**2** turn it upside down above the sink or vessel to empty.

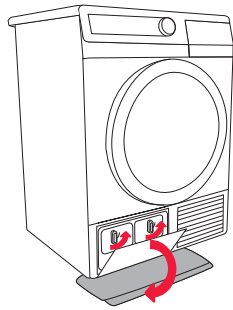
**(2)** Pull out the spout at the opening for easier emptying (only some models).



### CLEANING THE HEAT PUMP FILTER

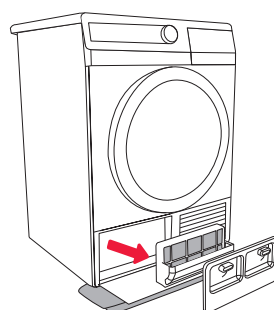
**!** Clean the foam filter at least after every five drying cycles.

Push the exterior cover upwards towards the appliance until it snaps back into place.

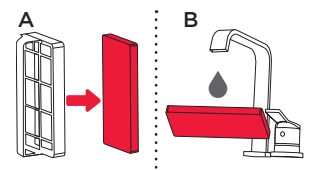


**1** Place an absorbent cloth on the floor in front of the dryer.

Open the outer cover, then hold the handle on the left side and pull downwards.



**2** Use the handle to remove the heat pump foam filter from the dryer.



**3** Remove the filter from its handle and use a damp cloth to clean the housing.

Wash the filter under running water. Dry the filter and put it back.

en (06-16)

404254

SP 10 CLAS HP

## TIPS

FOR ECONOMICAL USE OF YOUR DRYER

FOR SMOOTH AND SOFT LAUNDRY

#### TIPS FOR ECONOMICAL USE

- Dry the recommended amount of laundry in each batch (see step 3 - Program Table).
- It is not recommended to dry laundry made of particularly delicate fabrics that may be deformed.
- Drying time will be shorter and power consumption will be lower if the garments are thoroughly wrung or spun before drying.
- Regular cleaning of the filters will lead to optimum drying time and minimum power consumption.
- Use of conditioner in the washing cycle is not necessary when the clothes are dried in a dryer.

#### TIPS FOR SMOOTH AND SOFT LAUNDRY

- Select the appropriate drying program to avoid over-drying your laundry and problems with ironing or shrinkage of fabric.
- Remove laundry right after the end of the drying cycle to prevent it from creasing again.
- Ionizer system adds negative ions into dryers drum - the fibre will be flexible and your clothes will be tender and easy to iron.
- Dry smaller amount of laundry or single items with the timed program. When drying smaller amounts of laundry, the sensor may not perceive the actual level of moisture.

## PROBLEM/ ERROR CAUSE

WHAT TO DO ...?

Problem/error	Cause	What to do ...?
Laundry is not dried, or drying temperature is longer than 4h.	<ul style="list-style-type: none"> <li>• Filters are not clean.</li> <li>• The room is not sufficiently ventilated.</li> <li>• Inappropriate temperature in the room</li> <li>• Laundry was not sufficiently wrung or spun.</li> <li>• Amount of laundry dried in the appliance is too large or insufficient.</li> </ul>	<ul style="list-style-type: none"> <li>• Clean the filters.</li> <li>• Install the dryer in an appropriate room.</li> <li>• Check if the temperature in the room where the dryer is installed is too high (over 25°C) or too low (below 10°C).</li> <li>• Laundry inserted into the dryer was not sufficiently wrung or spun, or an inappropriate drying program was selected.</li> </ul>
Unevenly dried laundry.	<ul style="list-style-type: none"> <li>• The amount of laundry dried at a time is too large.</li> <li>• Drying the pieces of different thicknesses</li> <li>• Drying the different types of laundry</li> </ul>	<ul style="list-style-type: none"> <li>• Make sure the laundry is sorted by type and size of items given the selected program.</li> </ul>
Error in the drum lighting.	<ul style="list-style-type: none"> <li>• There is no lighting when the dryer door is opened.</li> </ul>	<ul style="list-style-type: none"> <li>• Disconnect the dryer from the power mains and call an authorized service unit.</li> </ul>
On display: F3	<ul style="list-style-type: none"> <li>• Full condensate tank</li> <li>• If the condensate tank is empty, there is a pump failure.</li> </ul>	<ul style="list-style-type: none"> <li>• Empty the condensate tank.</li> <li>• Disconnect the appliance and call the nearest service unit.</li> </ul>
On display: F4	<ul style="list-style-type: none"> <li>• Clogged filters</li> <li>• If the filters are clean, there may be a compressor failure.</li> </ul>	<ul style="list-style-type: none"> <li>• Clean the filters.</li> <li>• Disconnect the appliance and call the nearest service unit.</li> </ul>
On display: "LO"	<ul style="list-style-type: none"> <li>• Steam generator tank is empty</li> </ul>	<ul style="list-style-type: none"> <li>• Add distilled water</li> </ul>

Write down the failure/error code: F0, F1, or F2, disconnect the appliance and call the nearest authorized service (call center).